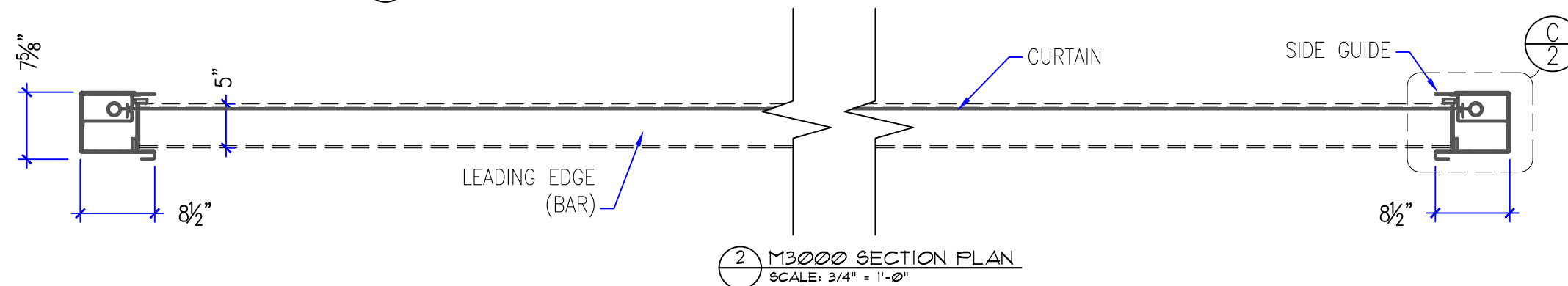
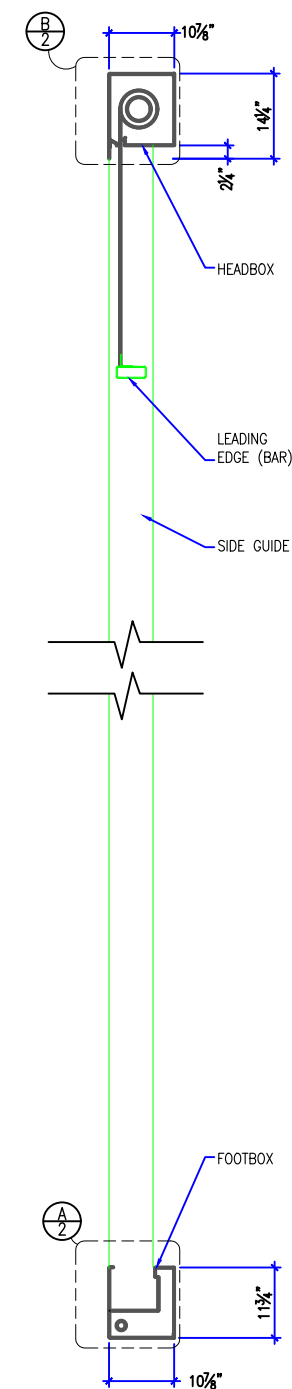
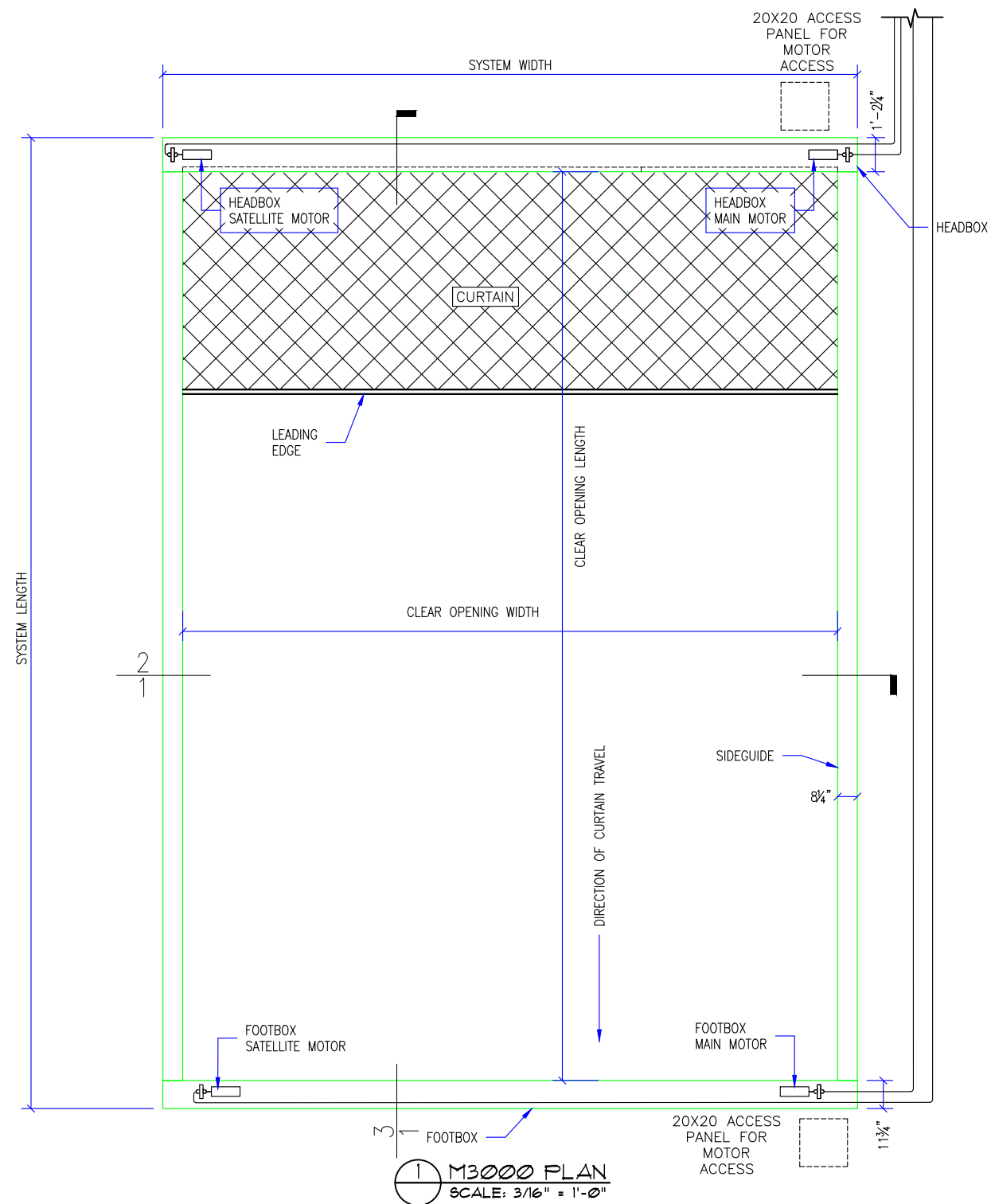




287 N. Maple Grove
Boise, ID 83704
800.574.0330
www.smokeguard.com

- GENERAL NOTES: M3000
- SMOKE GUARD FIRE RATED UNITS (HOUSINGS & SIDE GUIDES) TO BE MOUNTED TO A FINISHED, FIRE RATED ASSEMBLY OR STRUCTURE PER YOUR APPLICATION.
 - CLIENT TO PROVIDE CONTINUOUS MOUNTING SURFACE FOR STRUCTURAL AND SHEET METAL ATTACHMENT.
 - TOLERANCE: FLOOR TO CEILING VARIANCE MUST BE WITHIN +/- 1/2" ACROSS LENGTH OF MACHINE..
 - ORDER LENGTHS TO BE AT 1/4" INCREMENTS ONLY.
 - DIMENSIONS TO NOT INCLUDE HEADS OF EXTERNAL FASTENERS.
 - 12 GA. STEEL TOP MOUNTING PLATE
 - STATIC LOADS
 - HEADBOX: 40 LBS/FT.
 - FOOTBOX: 40 LBS/FT.
 - GUIDES: 15 LBS/FT.
 - CONTROLLER CONDUIT BY OTHERS
 - CONTROLLER CABLE PROVIDED
 - PROVIDE ACCESS TO CONTROLLER
 - CONTROLLER MOUNTING SUBSTRATE BY OTHERS
 - FIRE RATING FOR ENCLOSURE ABOVE HOUSING DESIGNED BY OTHERS.



THESE DRAWINGS SHOW OUR INTERPRETATION OF THE PRINCIPAL PLANS AND SPECIFICATIONS. THEY ARE SUBMITTED AS CHECK PRINTS REQUIRING REVIEW AND POSSIBLE REVISIONS TO DETAILS AND/OR DIMENSIONS. BEFORE FABRICATION OF MATERIALS CAN BEGIN, DRAWING PACKAGE MUST MATCH O.P.M. ORDER AND BE RETURNED SIGNED AND DATED. IF THERE ARE SIZE DISCREPANCIES BETWEEN THIS DRAWING PACKAGE AND O.P.M. ORDER, THESE DRAWINGS SUPERCEDE O.P.M. DIMENSIONS. IF CONSIDERABLY DIFFERENT, A RE-SUBMITAL OF O.P.M. ORDER WILL BE REQUIRED. THIS SIGNATURE INDICATES PURCHASER'S FULL ACCEPTANCE OF DETAILS SHOWN AND THE PRODUCT IN CONFORMANCE TO SAME. THESE DESIGNS AND DRAWINGS ARE THE EXCLUSIVE PROPERTY OF SMOKE GUARD, INC. AND ARE NOT TO BE USED OR DUPLICATED WITHOUT PERMISSIONS.

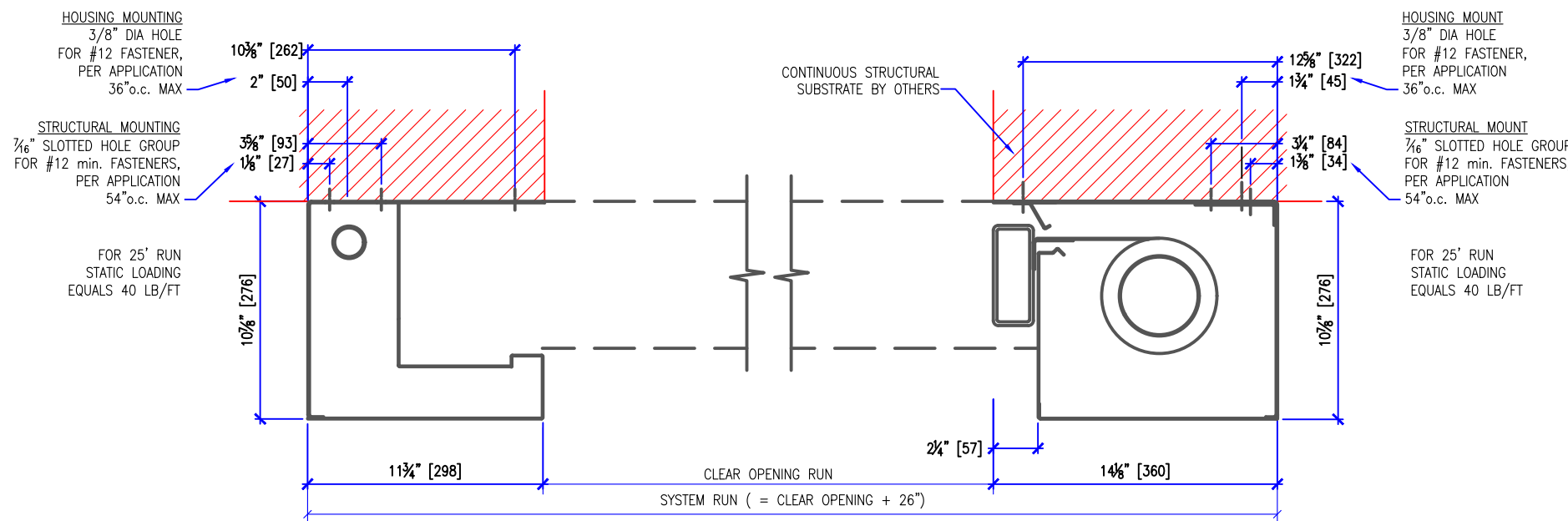
| REVISION | | |
|-----------------|---------------|----------------------|
| REVISION NUMBER | REVISION DATE | REVISION DESCRIPTION |
| D1 | 3.12.19 | INITIAL RELEASE |
| | | |
| | | |

QUOTE: ----
CONFIGURATION:
PROJECT: ----
DIST.: ----

| | |
|-------------------------------|----------------------|
| DESIGN SET: D1 | SIZE B |
| MODEL: M3000 | SHEET 1 OF 5 |
| SHEET TITLE: M3000-DETAILS | DRAWN: TLM 3.12.2019 |

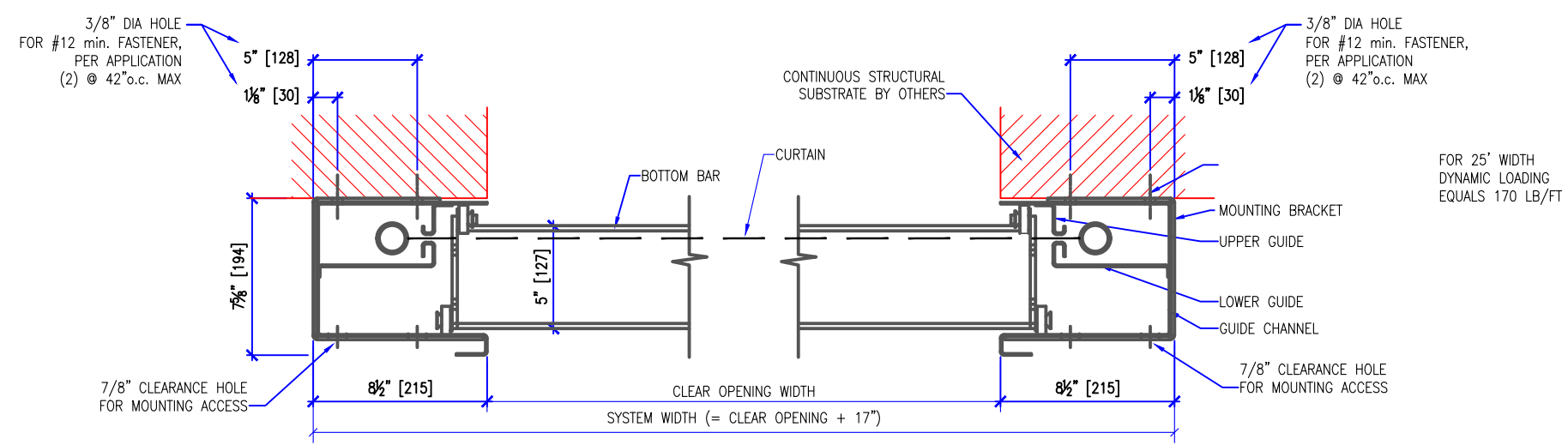
PAPER SIZE: 11 X 17

- GENERAL NOTES:
- SMOKE GUARD FIRE RATED UNITS (HOUSINGS & SIDE GUIDES) TO BE MOUNTED TO A FINISHED, FIRE RATED ASSEMBLY OR STRUCTURE PER YOUR APPLICATION.
 - CLIENT TO PROVIDE CONTINUOUS MOUNTING SURFACE FOR STRUCTURAL AND SHEET METAL ATTACHMENT.
 - TOLERANCE: FLOOR TO CEILING VARIANCE MUST BE WITHIN +/- 1/2" ACROSS LENGTH OF MACHINE..
 - ORDER LENGTHS TO BE AT 1/4" INCREMENTS ONLY.
 - DIMENSIONS TO NOT INCLUDE HEADS OF EXTERNAL FASTENERS.
 - 12 GA. STEEL TOP MOUNTING PLATE
 - CONTROLLER CONDUIT BY OTHERS
 - CONTROLLER CABLE PROVIDED
 - PROVIDE ACCESS TO CONTROLLER
 - CONTROLLER MOUNTING SUBSTRATE BY OTHERS
 - MAX 30 CONDUIT FEET FROM MAIN CONTROLLER TO HOUSING
 - FIRE RATING FOR ENCLOSURE ABOVE HOUSING DESIGNED BY OTHERS.
 - STATIC/DYNAMIC SYSTEM WEIGHT, 40 LBS/FT.
 - 4"-6" CLEARANCE REQ'D AT CURTAIN TRAY FOR INSTALLATION AND SERVICE
 - INTERNAL MOTORS ARE ACCESSIBLE THROUGH HOUSING OPENING WHEN UNIT IS DEPLOYED.



A M3000 TYPICAL FOOTBOX DETAILS
SCALE: 1 1/2" = 1'-0"

B M3000 TYPICAL HEADBOX DETAILS
SCALE: 1 1/2" = 1'-0"



C M3000 TYPICAL SIDEGUIDE DETAILS
SCALE: 1 1/2" = 1'-0"

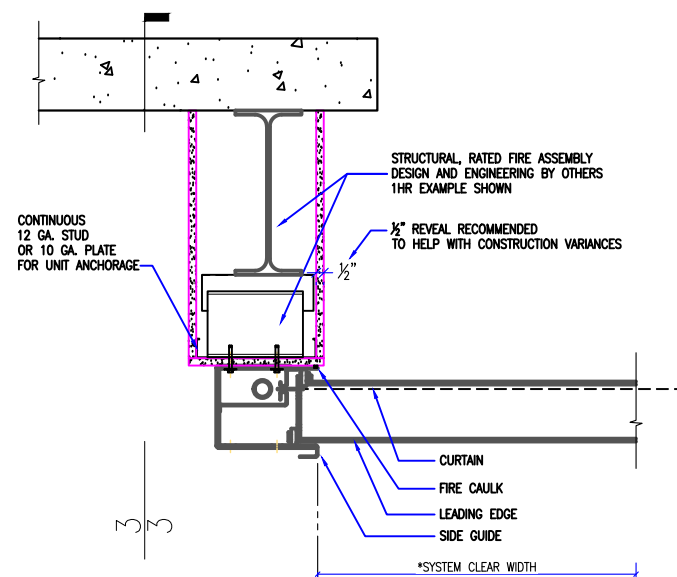
| REVISION | | |
|-----------------|---------------|----------------------|
| REVISION NUMBER | REVISION DATE | REVISION DESCRIPTION |
| D1 | 3.12.19 | INITIAL RELEASE |
| | | |
| | | |

QUOTE: ----
CONFIGURATION:
PROJECT: ----
DIST.: ----

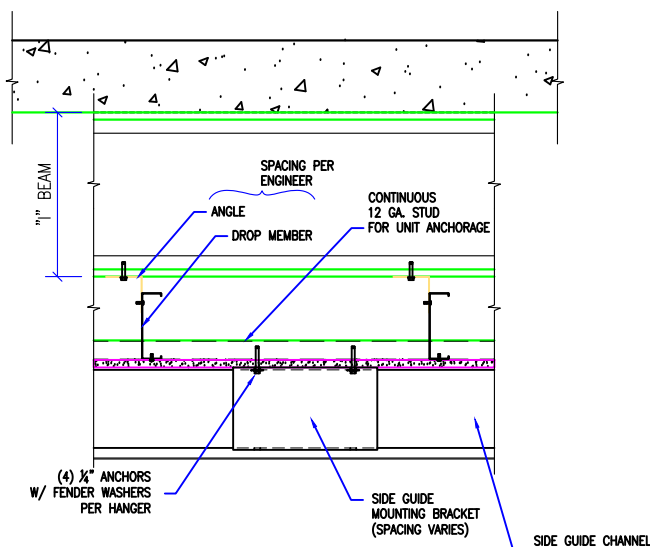
| | |
|------------------------------------|------------------|
| DESIGN SET: D1 | SIZE B |
| MODEL: M3000 | SHEET |
| SHEET TITLE: M3000 TYP. DETAILS | 2 OF 5 |
| DRAWN: TLM | 3.12.2019 |

THESE DRAWINGS SHOW OUR INTERPRETATION OF THE PRINCIPAL PLANS AND SPECIFICATIONS. THEY ARE SUBMITTED AS CHECK PRINTS REQUIRING REVIEW AND POSSIBLE REVISIONS TO DETAILS AND/OR DIMENSIONS. BEFORE FABRICATION OF MATERIALS CAN BEGIN, DRAWING PACKAGE MUST MATCH O.P.M. ORDER AND BE RETURNED SIGNED AND DATED. IF THERE ARE SIZE DISCREPANCIES BETWEEN THIS DRAWING PACKAGE AND O.P.M. ORDER, THESE DRAWING SUPERCEDE O.P.M. DIMENSIONS. IF CONSIDERABLY DIFFERENT, A RE-SUBMITTAL OF O.P.M. ORDER WILL BE REQUIRED. THIS SIGNATURE INDICATES PURCHASER'S FULL ACCEPTANCE OF DETAILS SHOWN AND THE PRODUCT IN CONFORMANCE TO SAME. THESE DESIGNS AND DRAWINGS ARE THE EXCLUSIVE PROPERTY OF SMOKE GUARD, INC. AND ARE NOT TO BE USED OR DUPLICATED WITHOUT PERMISSIONS.

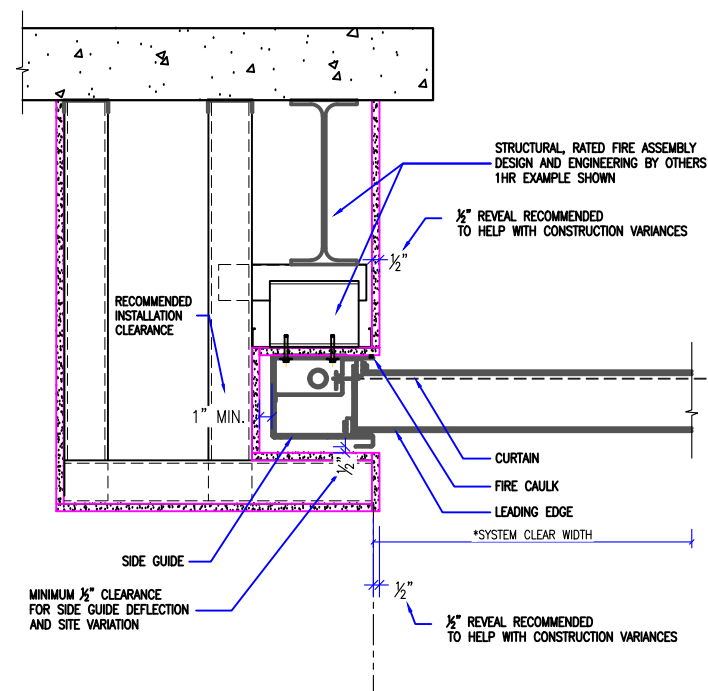
- GENERAL NOTES:
- SMOKE GUARD FIRE RATED UNITS (HOUSINGS & SIDE GUIDES) TO BE MOUNTED TO A FINISHED, FIRE RATED ASSEMBLY OR STRUCTURE PER YOUR APPLICATION.
 - CLIENT TO PROVIDE CONTINUOUS MOUNTING SURFACE FOR STRUCTURAL AND SHEET METAL ATTACHMENT.
 - TOLERANCE: FLOOR TO CEILING VARIANCE MUST BE WITHIN +/- 1/2" ACROSS LENGTH OF MACHINE..
 - ORDER LENGTHS TO BE AT 1/4" INCREMENTS ONLY.
 - DIMENSIONS TO NOT INCLUDE HEADS OF EXTERNAL FASTENERS.
 - 12 GA. STEEL TOP MOUNTING PLATE
 - CONTROLLER CONDUIT BY OTHERS
 - CONTROLLER CABLE PROVIDED
 - PROVIDE ACCESS TO CONTROLLER
 - CONTROLLER MOUNTING SUBSTRATE BY OTHERS
 - MAX 30 CONDUIT FEET FROM MAIN CONTROLLER TO HOUSING
 - FIRE RATING FOR ENCLOSURE ABOVE HOUSING DESIGNED BY OTHERS.
 - STATIC/DYNAMIC SYSTEM WEIGHT, 40 LBS/FT.
 - 4"-6" CLEARANCE REQ'D AT CURTAIN TRAY FOR INSTALLATION AND SERVICE
 - INTERNAL MOTORS ARE ACCESSIBLE THROUGH HOUSING OPENING WHEN UNIT IS DEPLOYED.



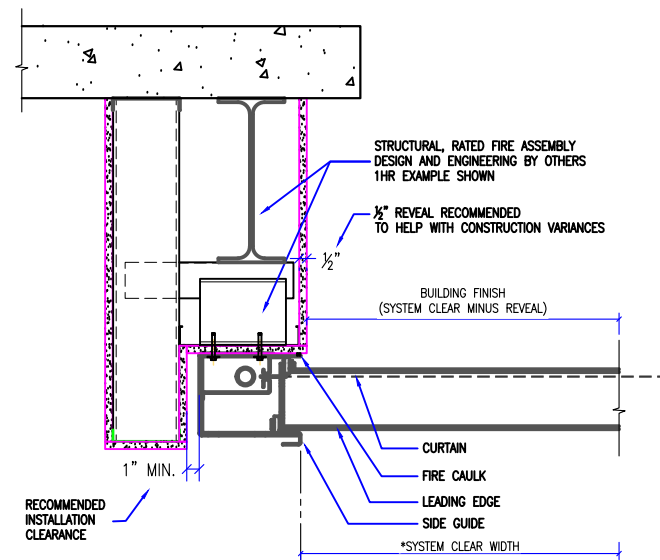
1 M3000-MINIMUM DROP RATER HEADER @ SIDE GUIDES
SCALE: 3/4" = 1'-0"



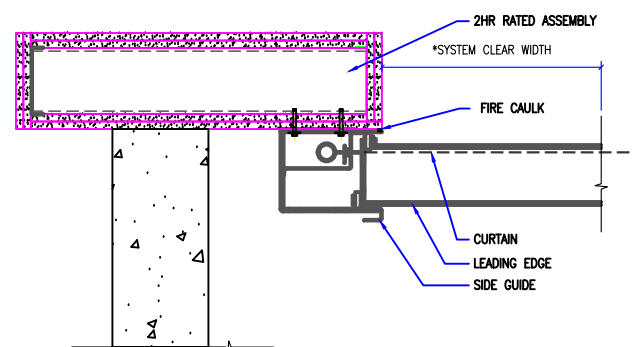
3 M3000-STRUCTURAL MOUNTING
SCALE: 3/4" = 1'-0"



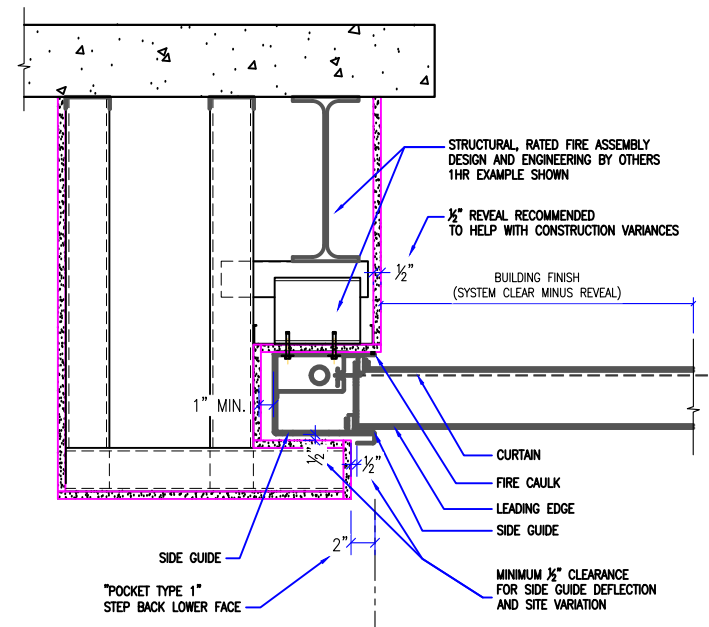
5 M3000-DROP RATED HEADER POCKET-2 @ SIDE GUIDE
SCALE: 3/4" = 1'-0"



2 M3000-DROP RATER NOTCH HEADER @ SIDE GUIDE
SCALE: 3/4" = 1'-0"



4 M3000-SYSTEM AS TESTED-HEAD & FOOTBOX SIM.
SCALE: 3/4" = 1'-0"



6 M3000-DROP RATED HEADER POCKET-1 @ SIDE GUIDE
SCALE: 3/4" = 1'-0"

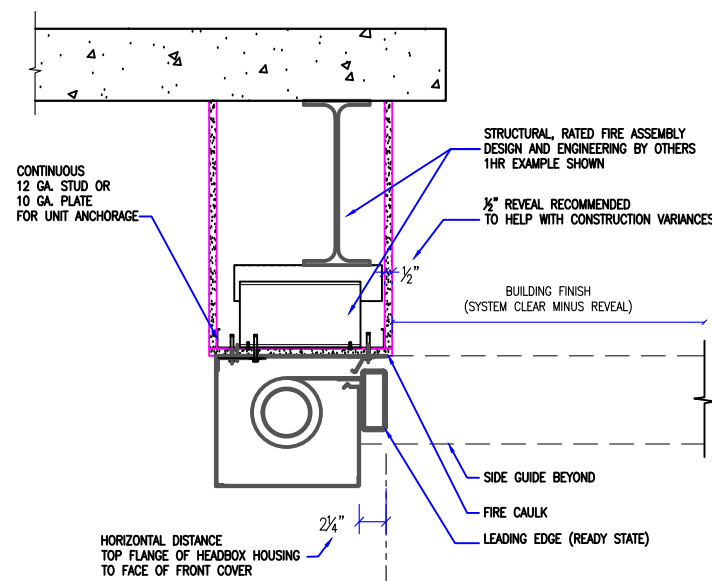
| REVISION | | |
|-----------------|---------------|----------------------|
| REVISION NUMBER | REVISION DATE | REVISION DESCRIPTION |
| D1 | 3.12.19 | INITIAL RELEASE |
| | | |
| | | |

QUOTE: ---
CONFIGURATION: ---
PROJECT: ---
DIST.: ---

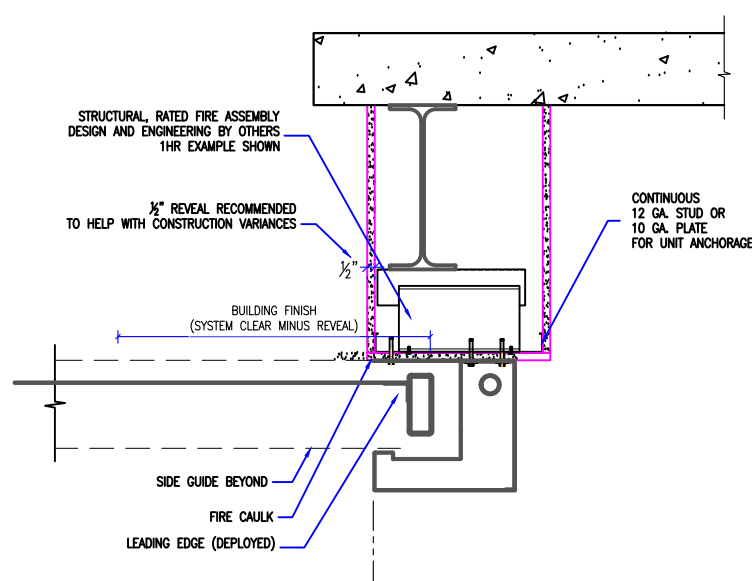
| | |
|----------------------------------|-----------|
| DESIGN SET: D1 | SIZE B |
| MODEL: M3000 | SHEET |
| SHEET TITLE: M3000-1 SIDE GUIDES | 3 OF 5 |
| DRAWN: TLM | 3.12.2019 |

THESE DRAWINGS SHOW OUR INTERPRETATION OF THE PRINCIPAL PLANS AND SPECIFICATIONS. THEY ARE SUBMITTED AS CHECK PRINTS REQUIRING REVIEW AND POSSIBLE REVISIONS TO DETAILS AND/OR DIMENSIONS. BEFORE FABRICATION OF MATERIALS CAN BEGIN, DRAWING PACKAGE MUST MATCH O.P.M. ORDER AND BE RETURNED SIGNED AND DATED. IF THERE ARE SIZE DISCREPANCIES BETWEEN THIS DRAWING PACKAGE AND O.P.M. ORDER, THESE DRAWING SUPERCEDE O.P.M. DIMENSIONS. IF CONSIDERABLY DIFFERENT, A RE-SUBMITTAL OF O.P.M. ORDER WILL BE REQUIRED. THIS SIGNATURE INDICATES PURCHASER'S FULL ACCEPTANCE OF DETAILS SHOWN AND THE PRODUCT IN CONFORMANCE TO SAME. THESE DESIGNS AND DRAWINGS ARE THE EXCLUSIVE PROPERTY OF SMOKE GUARD, INC. AND ARE NOT TO BE USED OR DUPLICATED WITHOUT PERMISSIONS.

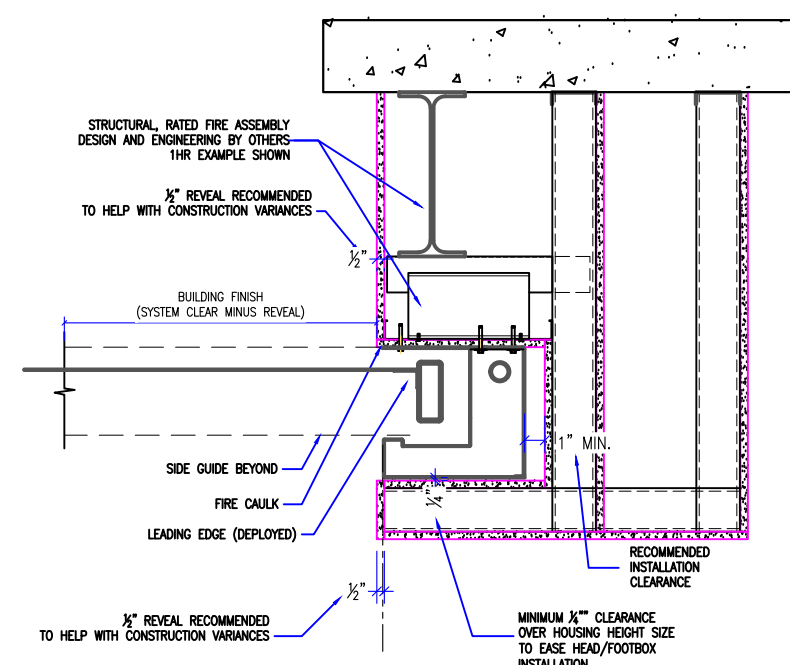
- GENERAL NOTES:
- SMOKE GUARD FIRE RATED UNITS (HOUSINGS & SIDE GUIDES) TO BE MOUNTED TO A FINISHED, FIRE RATED ASSEMBLY OR STRUCTURE PER YOUR APPLICATION.
 - CLIENT TO PROVIDE CONTINUOUS MOUNTING SURFACE FOR STRUCTURAL AND SHEET METAL ATTACHMENT.
 - TOLERANCE: FLOOR TO CEILING VARIANCE MUST BE WITHIN +/- 1/2" ACROSS LENGTH OF MACHINE..
 - ORDER LENGTHS TO BE AT 1/4" INCREMENTS ONLY.
 - DIMENSIONS TO NOT INCLUDE HEADS OF EXTERNAL FASTENERS.
 - 12 GA. STEEL TOP MOUNTING PLATE
 - CONTROLLER CONDUIT BY OTHERS
 - CONTROLLER CABLE PROVIDED
 - PROVIDE ACCESS TO CONTROLLER
 - CONTROLLER MOUNTING SUBSTRATE BY OTHERS
 - MAX 30 CONDUIT FEET FROM MAIN CONTROLLER TO HOUSING
 - FIRE RATING FOR ENCLOSURE ABOVE HOUSING DESIGNED BY OTHERS.
 - STATIC/DYNAMIC SYSTEM WEIGHT, 40 LBS/FT.
 - 4"-6" CLEARANCE REQ'D AT CURTAIN TRAY FOR INSTALLATION AND SERVICE
 - INTERNAL MOTORS ARE ACCESSIBLE THROUGH HOUSING OPENING WHEN UNIT IS DEPLOYED.



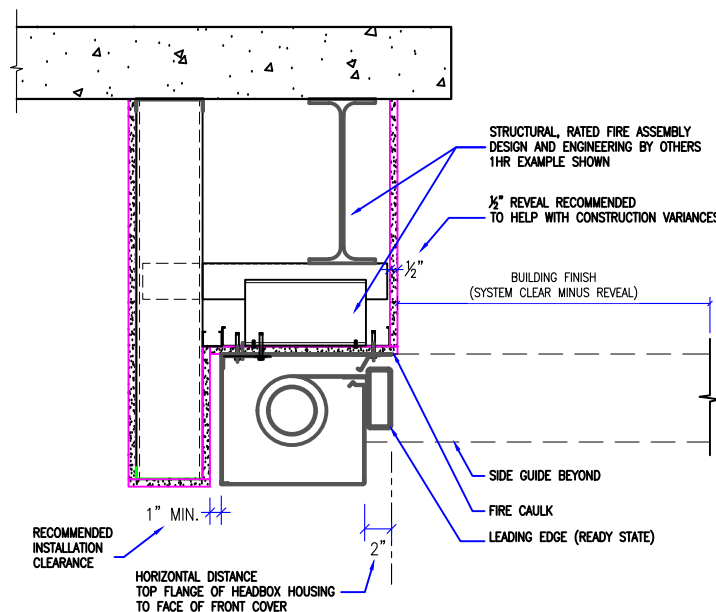
1 M3000-DROP RATED HEADER @ HEADBOX
SCALE: 3/4" = 1'-0"



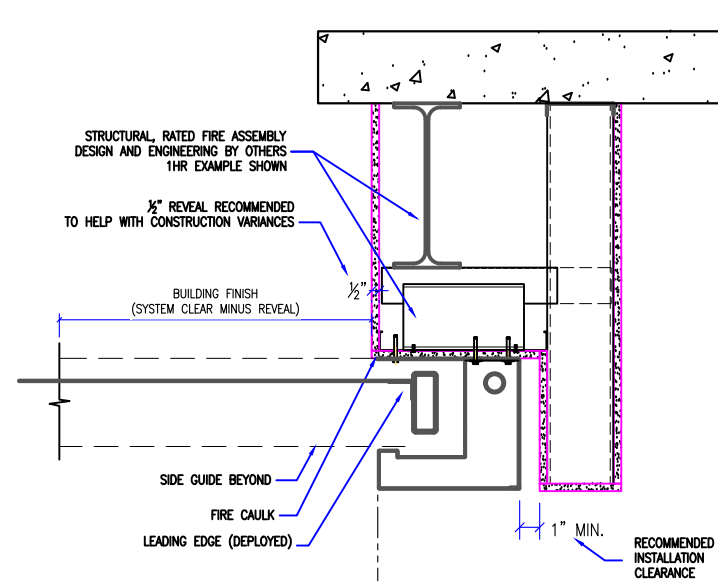
3 M3000-DROP RATED HEADER @ FOOTBOX
SCALE: 3/4" = 1'-0"



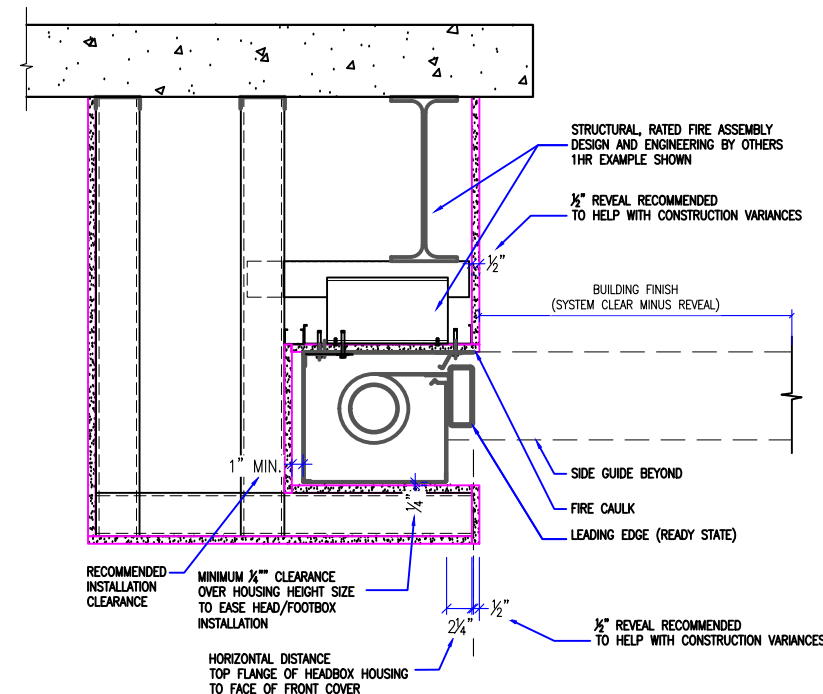
5 M3000-DROP RATED NOTCH HEADER @ FOOTBOX
SCALE: 3/4" = 1'-0"



2 M3000-DROP RATED NOTCH HEADER @ HEADBOX
SCALE: 3/4" = 1'-0"



4 M3000-DROP RATED HEADER @ FOOTBOX
SCALE: 3/4" = 1'-0"



6 M3000-DROP RATED NOTCH HEADER @ HEADBOX
SCALE: 3/4" = 1'-0"

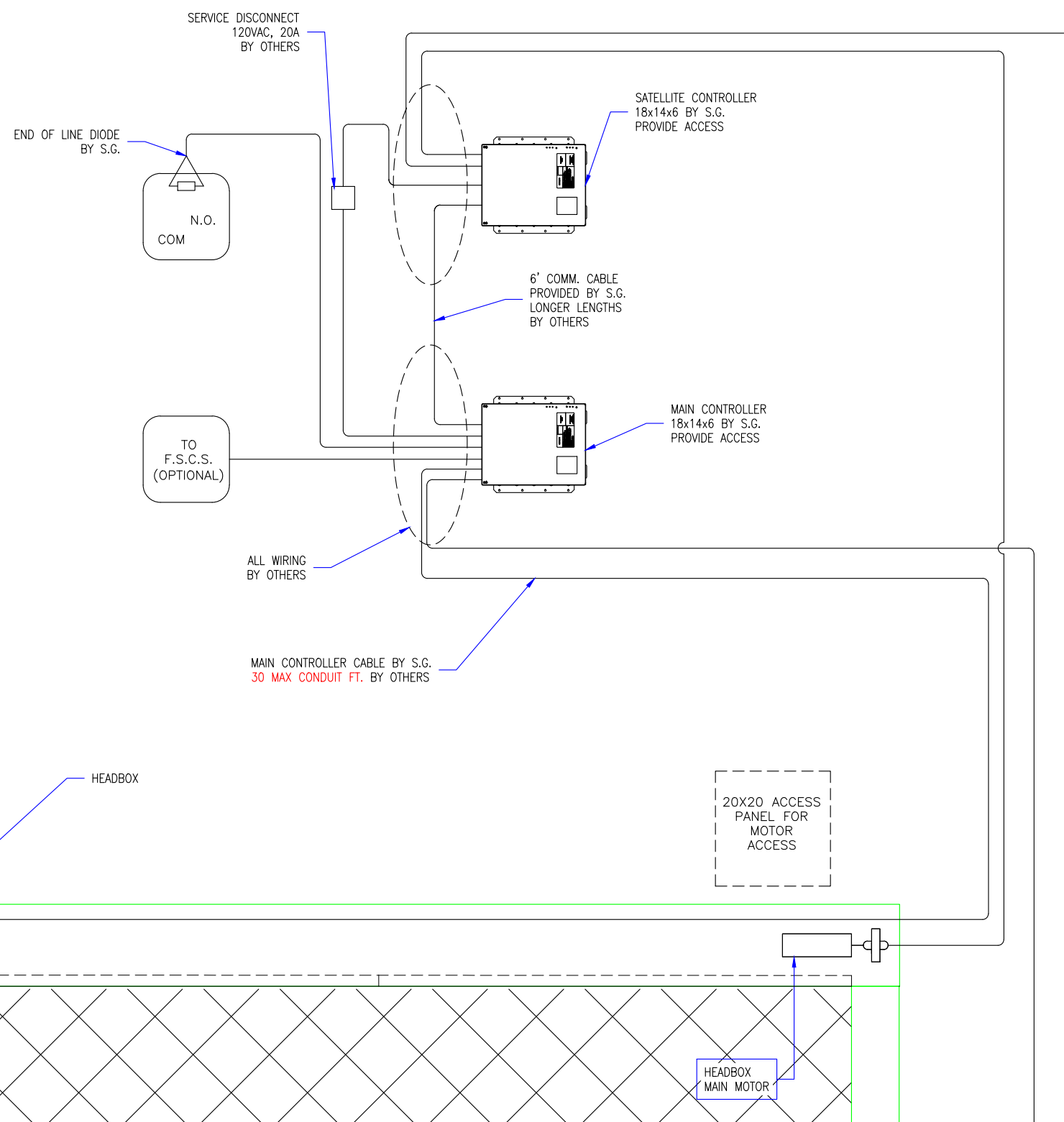
THESE DRAWINGS SHOW OUR INTERPRETATION OF THE PRINCIPAL PLANS AND SPECIFICATIONS. THEY ARE SUBMITTED AS CHECK PRINTS REQUIRING REVIEW AND POSSIBLE REVISIONS TO DETAILS AND/OR DIMENSIONS. BEFORE FABRICATION OF MATERIALS CAN BEGIN, DRAWING PACKAGE MUST MATCH O.P.M. ORDER AND BE RETURNED SIGNED AND DATED. IF THERE ARE SIZE DISCREPANCIES BETWEEN THIS DRAWING PACKAGE AND O.P.M. ORDER, THESE DRAWING SUPERCEDE O.P.M. DIMENSIONS. IF CONSIDERABLY DIFFERENT, A RE-SUBMITTAL OF O.P.M. ORDER WILL BE REQUIRED. THIS SIGNATURE INDICATES PURCHASER'S FULL ACCEPTANCE OF DETAILS SHOWN AND THE PRODUCT IN CONFORMANCE TO SAME. THESE DESIGNS AND DRAWINGS ARE THE EXCLUSIVE PROPERTY OF SMOKE GUARD, INC. AND ARE NOT TO BE USED OR DUPLICATED WITHOUT PERMISSIONS.

| REVISION | | |
|-----------------|---------------|----------------------|
| REVISION NUMBER | REVISION DATE | REVISION DESCRIPTION |
| D1 | 3.12.19 | INITIAL RELEASE |
| | | |
| | | |

QUOTE: ----
CONFIGURATION: ----
PROJECT: ----
DIST.: ----

| | |
|---------------------------------------|-----------|
| DESIGN SET: D1 | SIZE B |
| MODEL: M3000 | SHEET |
| SHEET TITLE: M3000- HEADBOX & FOOTBOX | 4 OF 5 |
| DRAWN: TLM | 3.12.2019 |

- GENERAL NOTES:
1. SMOKE GUARD FIRE RATED UNITS (HOUSINGS & SIDE GUIDES) TO BE MOUNTED TO A FINISHED, FIRE RATED ASSEMBLY OR STRUCTURE PER YOUR APPLICATION.
 2. CLIENT TO PROVIDE CONTINUOUS MOUNTING SURFACE FOR STRUCTURAL AND SHEET METAL ATTACHMENT.
 3. TOLERANCE: FLOOR TO CEILING VARIANCE MUST BE WITHIN +/- 1/2" ACROSS LENGTH OF MACHINE..
 4. ORDER LENGTHS TO BE AT 1/4" INCREMENTS ONLY.
 5. DIMENSIONS TO NOT INCLUDE HEADS OF EXTERNAL FASTENERS.
 6. 12 GA. STEEL TOP MOUNTING PLATE
 7. CONTROLLER CONDUIT BY OTHERS
 8. CONTROLLER CABLE PROVIDED
 9. PROVIDE ACCESS TO CONTROLLER
 10. CONTROLLER MOUNTING SUBSTRATE BY OTHERS
 11. MAX 30 CONDUIT FEET FROM MAIN CONTROLLER TO HOUSING
 12. FIRE RATING FOR ENCLOSURE ABOVE HOUSING DESIGNED BY OTHERS.
 13. STATIC/DYNAMIC SYSTEM WEIGHT, 40 LBS/FT.
 14. 4"-6" CLEARANCE REQ'D AT CURTAIN TRAY FOR INSTALLATION AND SERVICE
 15. INTERNAL MOTORS ARE ACCESSIBLE THROUGH HOUSING OPENING WHEN UNIT IS DEPLOYED.



1 M3000 ELECTRICAL DETAILS
SCALE: 1/2" = 1'-0"

THESE DRAWINGS SHOW OUR INTERPRETATION OF THE PRINCIPAL PLANS AND SPECIFICATIONS. THEY ARE SUBMITTED AS CHECK PRINTS REQUIRING REVIEW AND POSSIBLE REVISIONS TO DETAILS AND/OR DIMENSIONS. BEFORE FABRICATION OF MATERIALS CAN BEGIN, DRAWING PACKAGE MUST MATCH O.P.M. ORDER AND BE RETURNED SIGNED AND DATED. IF THERE ARE SIZE DISCREPANCIES BETWEEN THIS DRAWING PACKAGE AND O.P.M. ORDER, THESE DRAWINGS SUPERCEDE O.P.M. DIMENSIONS. IF CONSIDERABLY DIFFERENT, A RE-SUBMITTAL OF O.P.M. ORDER WILL BE REQUIRED. THIS SIGNATURE INDICATES PURCHASER'S FULL ACCEPTANCE OF DETAILS SHOWN AND THE PRODUCT IN CONFORMANCE TO SAME. THESE DESIGNS AND DRAWINGS ARE THE EXCLUSIVE PROPERTY OF SMOKE GUARD, INC. AND ARE NOT TO BE USED OR DUPLICATED WITHOUT PERMISSIONS.

| REVISION | | |
|-----------------|---------------|----------------------|
| REVISION NUMBER | REVISION DATE | REVISION DESCRIPTION |
| D1 | 3.12.19 | INITIAL RELEASE |
| | | |
| | | |

QUOTE: ----
CONFIGURATION:
PROJECT: ----
DIST.: ----

| | |
|--|------------------|
| DESIGN SET: D1 | SIZE B |
| MODEL: M3000 | SHEET |
| SHEET TITLE: M3000 ELECTRICAL DETAILS | 5 OF 5 |
| DRAWN: TLM | 3.12.2019 |