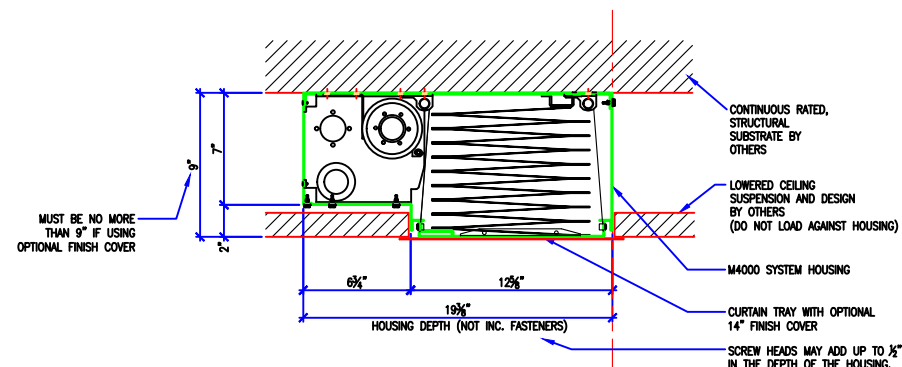
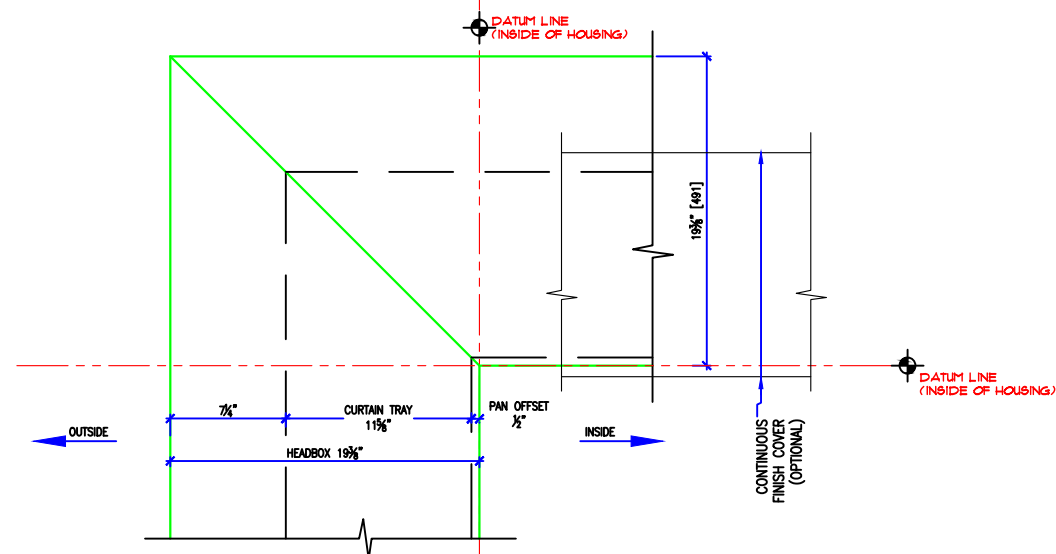


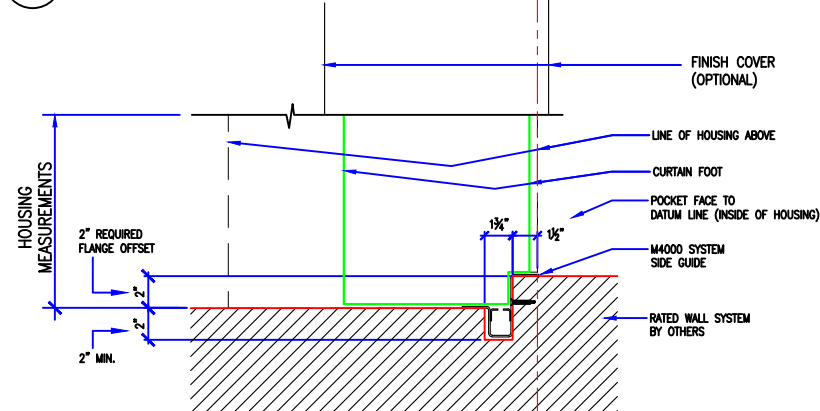
- GENERAL NOTES:
- SMOKE GUARD FIRE RATED UNITS (HOUSINGS & SIDE GUIDES) TO BE MOUNTED TO A FINISHED, FIRE RATED ASSEMBLY OR STRUCTURE PER YOUR APPLICATION.
 - CLIENT TO PROVIDE CONTINUOUS MOUNTING SURFACE FOR STRUCTURAL AND SHEET METAL ATTACHMENT.
 - TOLERANCE: FLOOR TO CEILING VARIANCE MUST BE WITHIN $\pm 1/2"$ ACROSS LENGTH OF MACHINE.
 - ORDER LENGTHS TO BE AT $1/4"$ INCREMENTS ONLY.
 - DIMENSIONS TO NOT INCLUDE HEADS OF EXTERNAL FASTENERS.
 - 12 GA. STEEL TOP MOUNTING PLATE
 - CONTROLLER CONDUIT BY OTHERS
 - CONTROLLER CABLE PROVIDED
 - PROVIDE ACCESS TO CONTROLLER
 - CONTROLLER MOUNTING SUBSTRATE BY OTHERS
 - MAX 30 CONDUIT FEET FROM MAIN CONTROLLER TO HOUSING
 - FIRE RATING FOR ENCLOSURE ABOVE HOUSING DESIGNED BY OTHERS.
 - STATIC/DYNAMIC SYSTEM WEIGHT, 40 LBS/FT.
 - 4"-6" CLEARANCE REQ'D AT CURTAIN TRAY FOR INSTALLATION AND SERVICE THROUGH HOUSING OPENING WHEN UNIT IS DEPLOYED.



A SECTION DETAIL @ HEADBOX
SCALE: 1" = 1'-0"

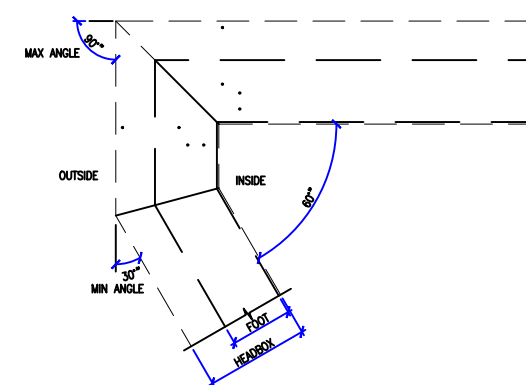


B PLAN DETAIL @ 90° CORNER
SCALE: 1" = 1'-0"

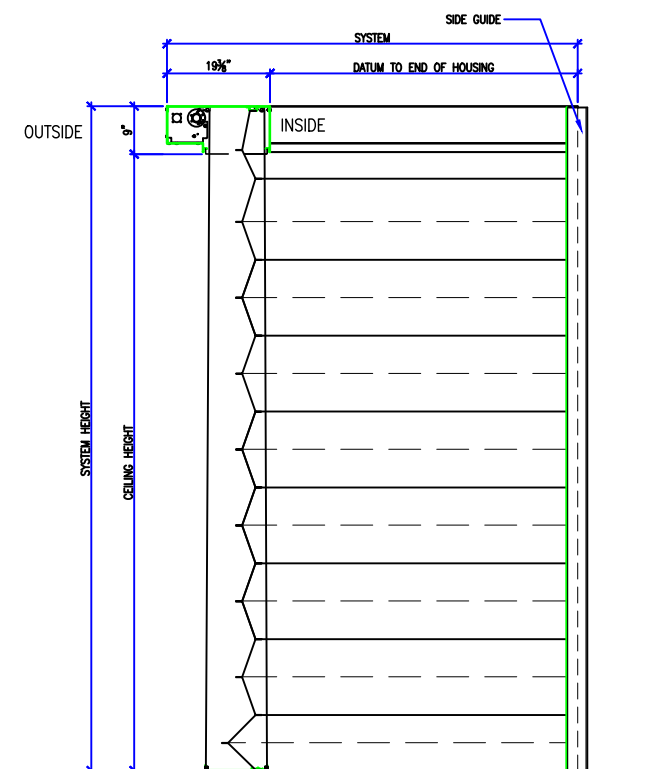


C PLAN DETAIL @ SIDEGUIDE
SCALE: 1" = 1'-0"

- NOTES:
- DATUM LINE = INSIDE OF HOUSING
 - MINIMUM TURN ANGLE 30°, MAXIMUM 90°
 - MINIMUM SEGMENT LENGTH = 1'-0"
 - SYSTEMS MUST CONTAIN (1) 6'-0" SEGMENT FOR MOTOR AND CONTROLLER
 - APPROXIMATELY (1) MOTOR FOR EVERY 20'-0" OF SYSTEM
 - (1) 120V INPUT BY OTHERS FOR EVERY (3) MOTORS
 - SYSTEM WEIGHT DYNAMIC/STATIC - 40 lb/ft



1 RETURN ANGLE EXAMPLE FOR LESS THAN 90°
SCALE: 1" = 1'-0"



2 M4000 TYPICAL SECTION
SCALE: 1" = 1'-0"

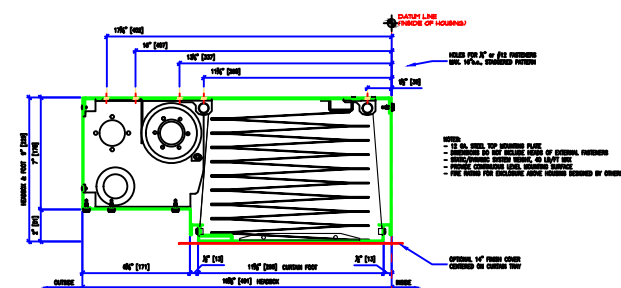
REVISION		
REVISION NUMBER	REVISION DATE	REVISION DESCRIPTION
D1	3.13.19	INITIAL RELEASE
----	----	----

QUOTE: ----
CONFIGURATION: ----
PROJECT: ----
DIST.: ----

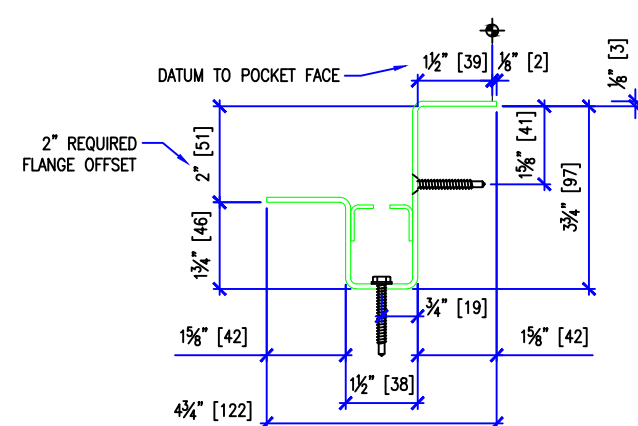
DESIGN SET: D1	SIZE B
MODEL: M4000	SHEET 1 OF 5
SHEET TITLE: M4000 ELEVATION DETAILS	
DRAWN: TLM	3.13.2019

THESE DRAWINGS SHOW OUR INTERPRETATION OF THE PRINCIPAL PLANS AND SPECIFICATIONS. THEY ARE SUBMITTED AS CHECK PRINTS REQUIRING REVIEW AND POSSIBLE REVISIONS TO DETAILS AND/OR DIMENSIONS. BEFORE FABRICATION OF MATERIALS CAN BEGIN, DRAWING PACKAGE MUST MATCH O.P.M. ORDER AND BE RETURNED SIGNED AND DATED. IF THERE ARE SIZE DISCREPANCIES BETWEEN THIS DRAWING PACKAGE AND O.P.M. ORDER, THESE DRAWINGS SUPERCEDE O.P.M. DIMENSIONS. IF CONSIDERABLY DIFFERENT, A RE-SUBMITAL OF O.P.M. ORDER WILL BE REQUIRED. THIS SIGNATURE INDICATES PURCHASER'S FULL ACCEPTANCE OF DETAILS SHOWN AND THE PRODUCT IN CONFORMANCE TO SAME. THESE DESIGNS AND DRAWINGS ARE THE EXCLUSIVE PROPERTY OF SMOKE GUARD, INC. AND ARE NOT TO BE USED OR DUPLICATED WITHOUT PERMISSIONS.

- GENERAL NOTES:
- SMOKE GUARD FIRE RATED UNITS (HOUSINGS & SIDE GUIDES) TO BE MOUNTED TO A FINISHED, FIRE RATED ASSEMBLY OR STRUCTURE PER YOUR APPLICATION.
 - CLIENT TO PROVIDE CONTINUOUS MOUNTING SURFACE FOR STRUCTURAL AND SHEET METAL ATTACHMENT.
 - TOLERANCE: FLOOR TO CEILING VARIANCE MUST BE WITHIN +/- 1/2" ACROSS LENGTH OF MACHINE.
 - ORDER LENGTHS TO BE AT 1/4" INCREMENTS ONLY.
 - DIMENSIONS TO NOT INCLUDE HEADS OF EXTERNAL FASTENERS.
 - 12 GA. STEEL TOP MOUNTING PLATE
 - CONTROLLER CONDUIT BY OTHERS
 - CONTROLLER CABLE PROVIDED
 - PROVIDE ACCESS TO CONTROLLER
 - CONTROLLER MOUNTING SUBSTRATE BY OTHERS
 - MAX 30 CONDUIT FEET FROM MAIN CONTROLLER TO HOUSING
 - FIRE RATING FOR ENCLOSURE ABOVE HOUSING DESIGNED BY OTHERS.
 - STATIC/DYNAMIC SYSTEM WEIGHT, 40 LBS/FT.
 - 4"-6" CLEARANCE REQ'D AT CURTAIN TRAY FOR INSTALLATION AND SERVICE
 - INTERNAL MOTORS ARE ACCESSIBLE THROUGH HOUSING OPENING WHEN UNIT IS DEPLOYED.

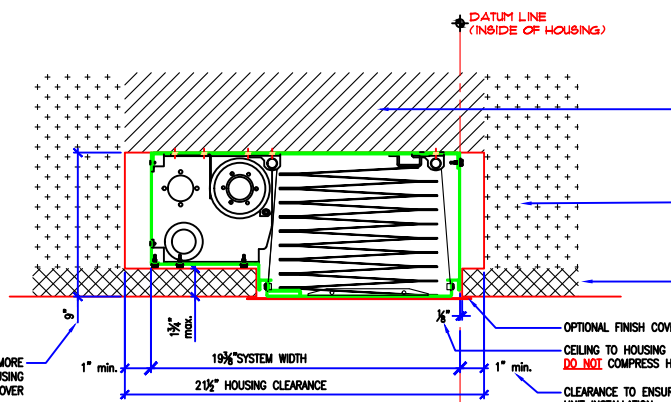


D HEAD BOX - SECTION VIEW
SCALE: 1" = 1'-0"

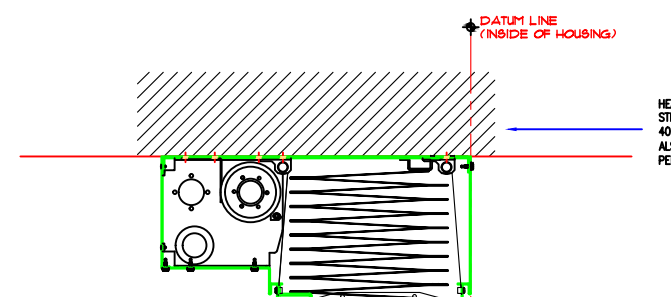


E SIDE GUIDE-PLAN VIEW
SCALE: 3" = 1'-0"

- NOTES:
- 12 GA STEEL
 - 1/4" OR #12 FASTENER PER APPLICATION, 12" o.c.

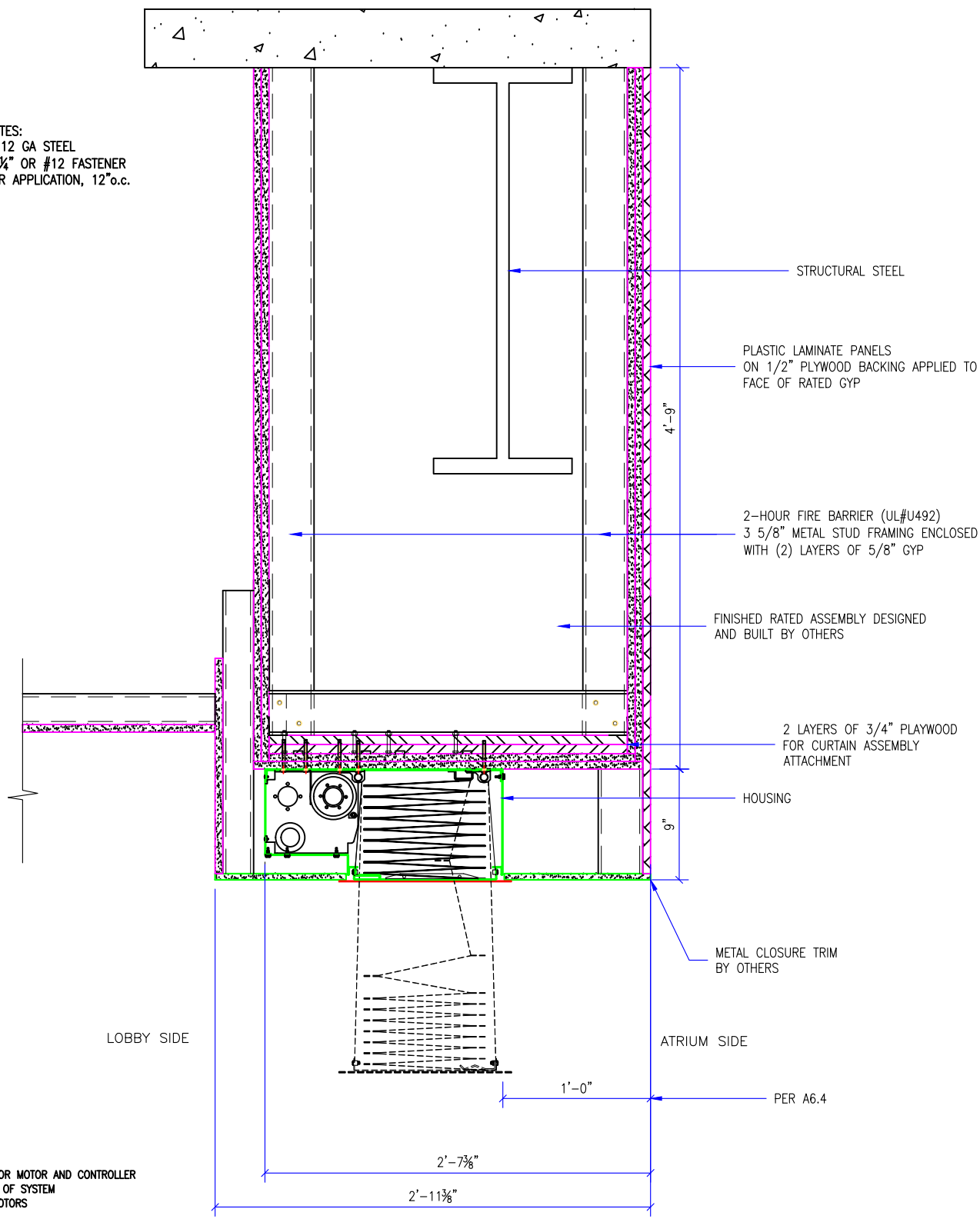


F SECTION DETAIL @ HOUSING FINISH DETAIL CLEARANCES
SCALE: 1" = 1'-0"



G SECTION DETAIL @ HOUSING MINIMUM MOUNTING REQUIREMENTS
SCALE: 1" = 1'-0"

- NOTES:
- DATUM LINE = INSIDE OF HOUSING
 - MINIMUM TURN ANGLE 30°, MAXIMUM 90°
 - MINIMUM SEGMENT LENGTH = 1'-0"
 - SYSTEMS MUST CONTAIN (1) 6'-0" SEGMENT FOR MOTOR AND CONTROLLER
 - APPROXIMATELY (1) MOTOR FOR EVERY 20'-0" OF SYSTEM
 - (1) 120V INPUT BY OTHERS FOR EVERY (3) MOTORS
 - SYSTEM WEIGHT DYNAMIC/STATIC - 40 lb/ft



H ELEVATION DETAILS
SCALE: 1" = 1'-0"

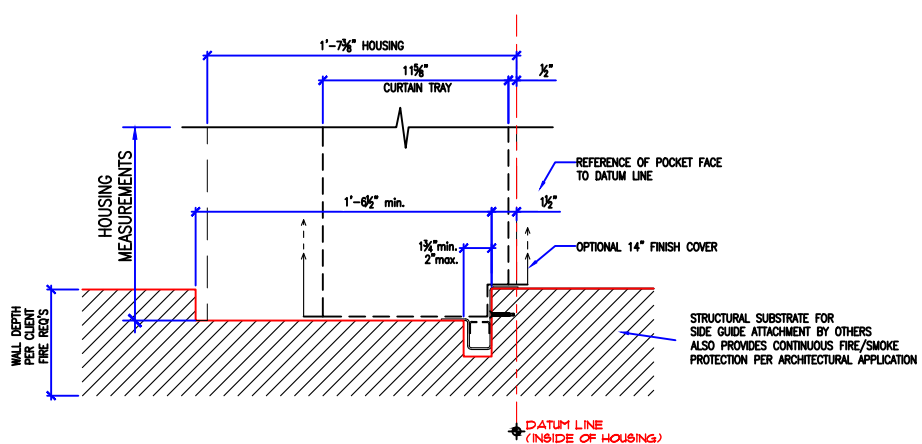
REVISION		
REVISION NUMBER	REVISION DATE	REVISION DESCRIPTION
D1	3.13.19	INITIAL RELEASE
---	---	---
---	---	---

QUOTE: ----
CONFIGURATION: ----
PROJECT: ----
DIST.: ----

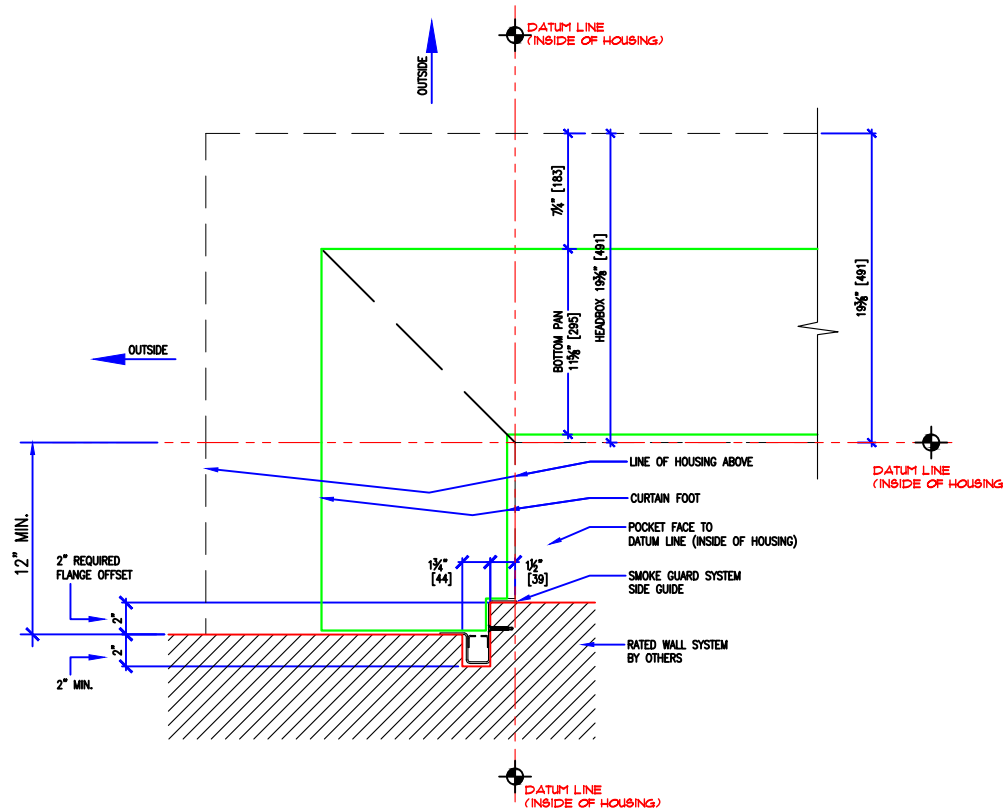
DESIGN SET: D1	SIZE B
MODEL: M4000	SHEET
SHEET TITLE: M4000 HEAD BOX DETAILS	2 OF 5
DRAWN: TLM	3.13.2019

THESE DRAWINGS SHOW OUR INTERPRETATION OF THE PRINCIPAL PLANS AND SPECIFICATIONS. THEY ARE SUBMITTED AS CHECK PRINTS REQUIRING REVIEW AND POSSIBLE REVISIONS TO DETAILS AND/OR DIMENSIONS. BEFORE FABRICATION OF MATERIALS CAN BEGIN, DRAWING PACKAGE MUST MATCH O.P.M. ORDER AND BE RETURNED SIGNED AND DATED. IF THERE ARE SIZE DISCREPANCIES BETWEEN THIS DRAWING PACKAGE AND O.P.M. ORDER, THESE DRAWING SUPERCEDE O.P.M. DIMENSIONS. IF CONSIDERABLY DIFFERENT, A RE-SUBMITTAL OF O.P.M. ORDER WILL BE REQUIRED. THIS SIGNATURE INDICATES PURCHASER'S FULL ACCEPTANCE OF DETAILS SHOWN AND THE PRODUCT IN CONFORMANCE TO SAME. THESE DESIGNS AND DRAWINGS ARE THE EXCLUSIVE PROPERTY OF SMOKE GUARD, INC. AND ARE NOT TO BE USED OR DUPLICATED WITHOUT PERMISSIONS.

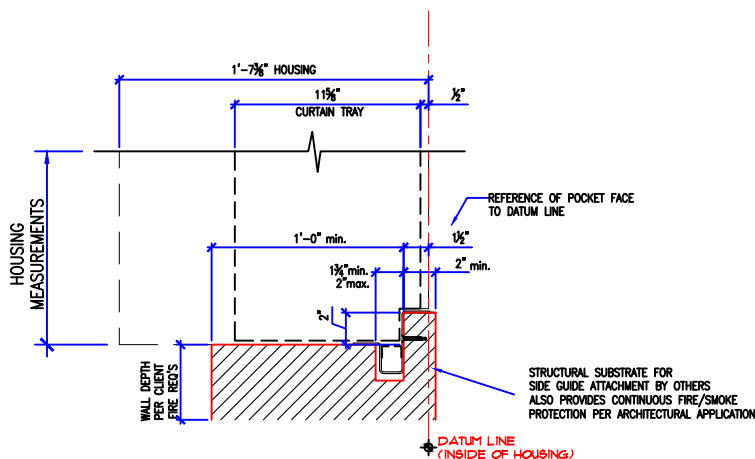
- GENERAL NOTES:
- SMOKE GUARD FIRE RATED UNITS (HOUSINGS & SIDE GUIDES) TO BE MOUNTED TO A FINISHED, FIRE RATED ASSEMBLY OR STRUCTURE PER YOUR APPLICATION.
 - CLIENT TO PROVIDE CONTINUOUS MOUNTING SURFACE FOR STRUCTURAL AND SHEET METAL ATTACHMENT.
 - TOLERANCE: FLOOR TO CEILING VARIANCE MUST BE WITHIN +/- 1/2" ACROSS LENGTH OF MACHINE..
 - ORDER LENGTHS TO BE AT 1/4" INCREMENTS ONLY.
 - DIMENSIONS TO NOT INCLUDE HEADS OF EXTERNAL FASTENERS.
 - 12 GA. STEEL TOP MOUNTING PLATE
 - CONTROLLER CONDUIT BY OTHERS
 - CONTROLLER CABLE PROVIDED
 - PROVIDE ACCESS TO CONTROLLER
 - CONTROLLER MOUNTING SUBSTRATE BY OTHERS
 - MAX 30 CONDUIT FEET FROM MAIN CONTROLLER TO HOUSING
 - FIRE RATING FOR ENCLOSURE ABOVE HOUSING DESIGNED BY OTHERS.
 - STATIC/DYNAMIC SYSTEM WEIGHT, 40 LBS/FT.
 - 4"-6" CLEARANCE REQ'D AT CURTAIN TRAY FOR INSTALLATION AND SERVICE
 - INTERNAL MOTORS ARE ACCESSIBLE THROUGH HOUSING OPENING WHEN UNIT IS DEPLOYED.



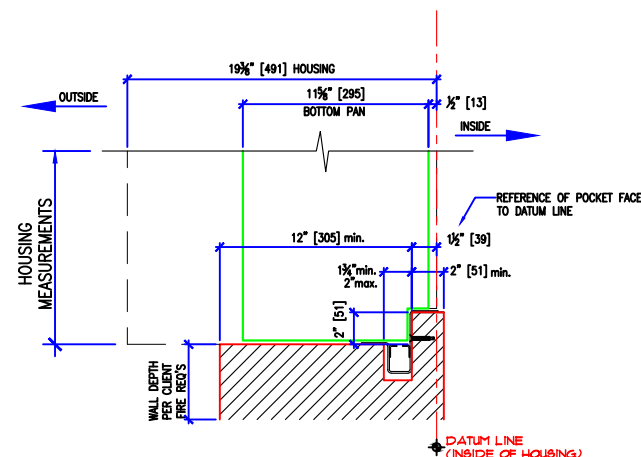
I PLAN DETAIL @ SIDEGUIDE
MINIMUM "POCKET" DIMENSIONS
SCALE: 1" = 1'-0"



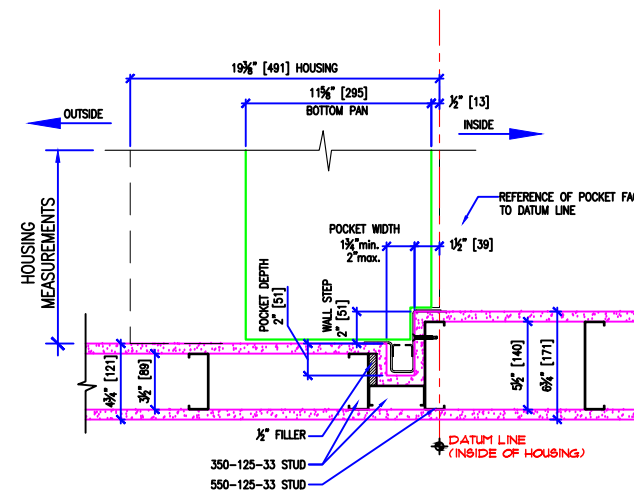
K MINIMUM RETURN @ SIDE GUIDE
SCALE: 1" = 1'-0"



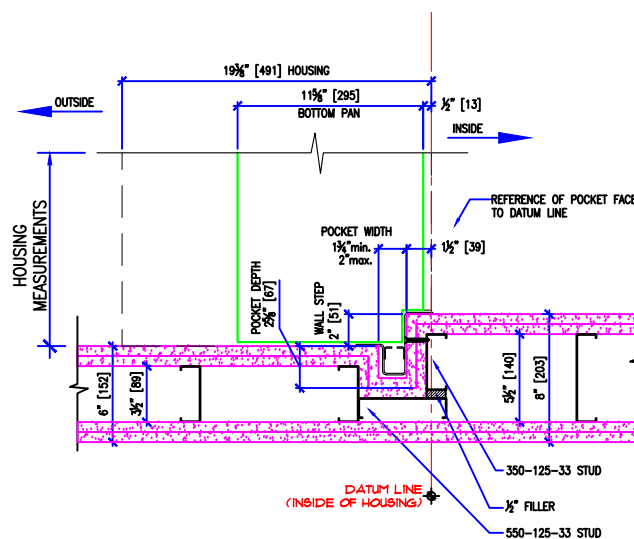
J PLAN DETAIL @ SIDE GUIDE
MINIMUM RATED WALL ENVELOPE
SCALE: 1" = 1'-0"



L PLAN DETAIL @ SIDE GUIDE
MINIMUM RATED WALL ENVELOPE
SCALE: 1" = 1'-0"



M PLAN DETAIL @ SIDE GUIDE
1 LAYER WALL ASSEMBLY
SCALE: 1" = 1'-0"



N PLAN DETAIL @ SIDE GUIDE
2 LAYER WALL ASSEMBLY
SCALE: 1" = 1'-0"

- NOTES:
- DATUM LINE = INSIDE OF HOUSING
 - MINIMUM TURN ANGLE 30°, MAXIMUM 90°
 - MINIMUM SEGMENT LENGTH = 1'-0"
 - SYSTEMS MUST CONTAIN (1) 6'-0" SEGMENT FOR MOTOR AND CONTROLLER
 - APPROXIMATELY (1) MOTOR FOR EVERY 20'-0" OF SYSTEM
 - (1) 120V INPUT BY OTHERS FOR EVERY (3) MOTORS
 - SYSTEM WEIGHT DYNAMIC/STATIC - 40 lb/ft

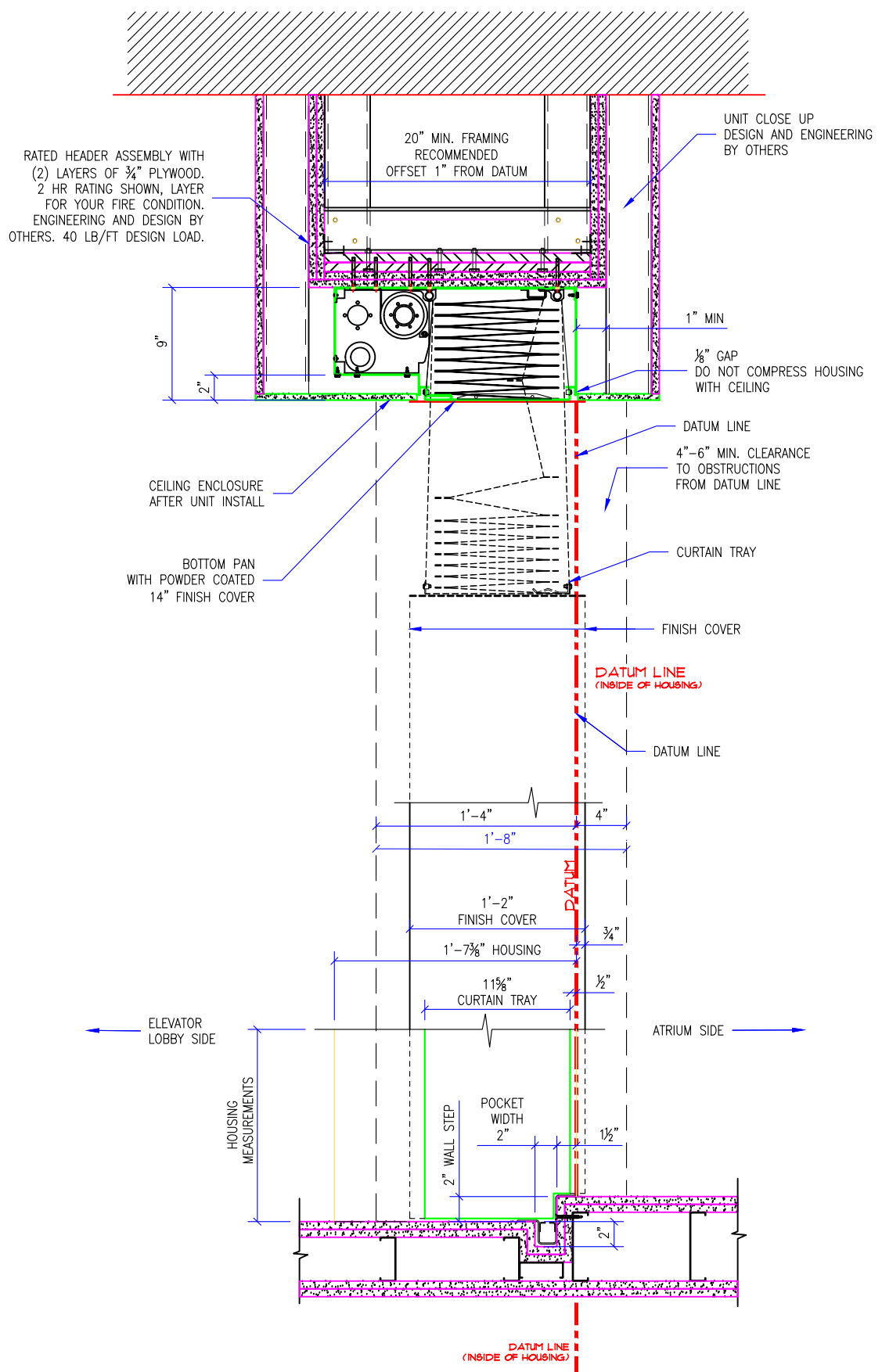
REVISION		
REVISION NUMBER	REVISION DATE	REVISION DESCRIPTION
D1	3.13.19	INITIAL RELEASE
---	---	---

QUOTE: -----
CONFIGURATION: -----
PROJECT: -----
DIST.: -----

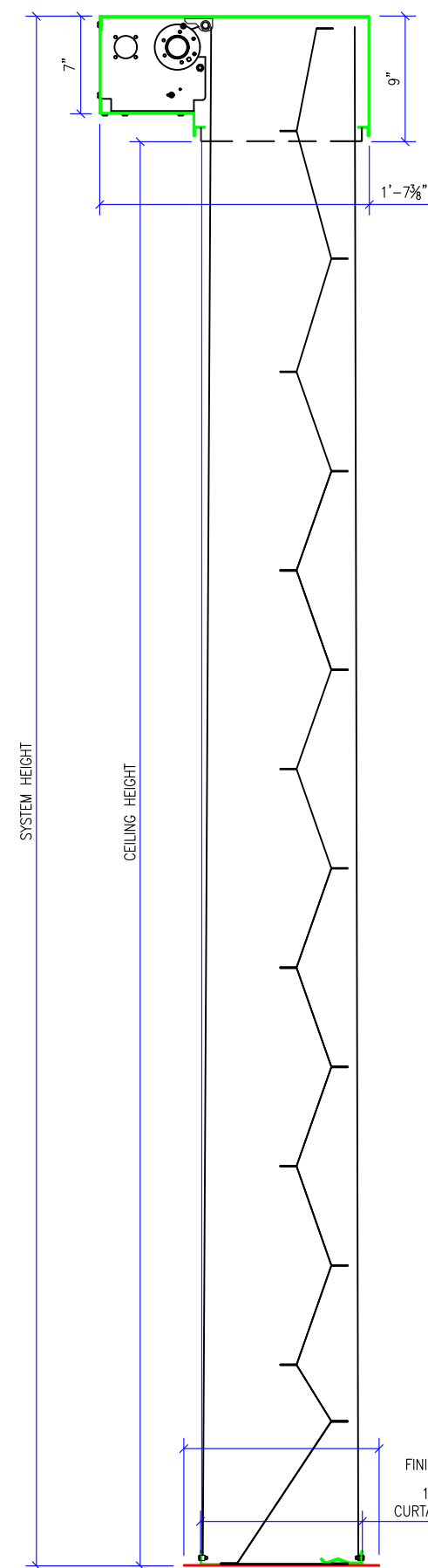
DESIGN SET: D1	SIZE B
MODEL: M4000	SHEET 3 OF 5
SHEET TITLE: M4000 SIDEGUIDE DETAILS	
DRAWN: TLM	3.13.2019

THESE DRAWINGS SHOW OUR INTERPRETATION OF THE PRINCIPAL PLANS AND SPECIFICATIONS. THEY ARE SUBMITTED AS CHECK PRINTS REQUIRING REVIEW AND POSSIBLE REVISIONS TO DETAILS AND/OR DIMENSIONS. BEFORE FABRICATION OF MATERIALS CAN BEGIN, DRAWING PACKAGE MUST MATCH O.P.M. ORDER AND BE RETURNED SIGNED AND DATED. IF THERE ARE SIZE DISCREPANCIES BETWEEN THIS DRAWING PACKAGE AND O.P.M. ORDER, THESE DRAWINGS SUPERCEDE O.P.M. DIMENSIONS. IF CONSIDERABLY DIFFERENT, A RE-SUBMITTAL OF O.P.M. ORDER WILL BE REQUIRED. THIS SIGNATURE INDICATES PURCHASER'S FULL ACCEPTANCE OF DETAILS SHOWN AND THE PRODUCT IN CONFORMANCE TO SAME. THESE DESIGNS AND DRAWINGS ARE THE EXCLUSIVE PROPERTY OF SMOKE GUARD, INC. AND ARE NOT TO BE USED OR DUPLICATED WITHOUT PERMISSIONS.

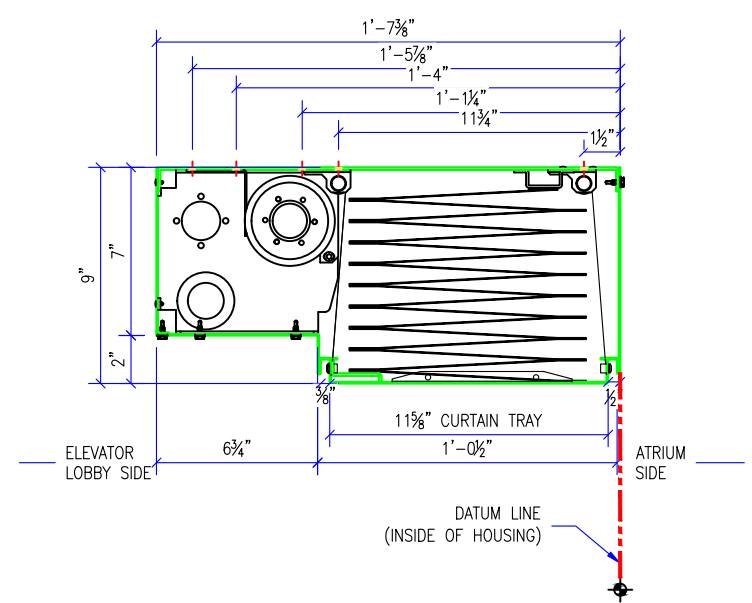
- GENERAL NOTES:
- SMOKE GUARD FIRE RATED UNITS (HOUSINGS & SIDE GUIDES) TO BE MOUNTED TO A FINISHED, FIRE RATED ASSEMBLY OR STRUCTURE PER YOUR APPLICATION.
 - CLIENT TO PROVIDE CONTINUOUS MOUNTING SURFACE FOR STRUCTURAL AND SHEET METAL ATTACHMENT.
 - TOLERANCE: FLOOR TO CEILING VARIANCE MUST BE WITHIN +/- 1/2" ACROSS LENGTH OF MACHINE..
 - ORDER LENGTHS TO BE AT 1/4" INCREMENTS ONLY.
 - DIMENSIONS TO NOT INCLUDE HEADS OF EXTERNAL FASTENERS.
 - 12 GA. STEEL TOP MOUNTING PLATE
 - CONTROLLER CONDUIT BY OTHERS
 - CONTROLLER CABLE PROVIDED
 - PROVIDE ACCESS TO CONTROLLER
 - CONTROLLER MOUNTING SUBSTRATE BY OTHERS
 - MAX 30 CONDUIT FEET FROM MAIN CONTROLLER TO HOUSING
 - FIRE RATING FOR ENCLOSURE ABOVE HOUSING DESIGNED BY OTHERS.
 - STATIC/DYNAMIC SYSTEM WEIGHT, 40 LBS/FT.
 - 4"-6" CLEARANCE REQ'D AT CURTAIN TRAY FOR INSTALLATION AND SERVICE
 - INTERNAL MOTORS ARE ACCESSIBLE THROUGH HOUSING OPENING WHEN UNIT IS DEPLOYED.



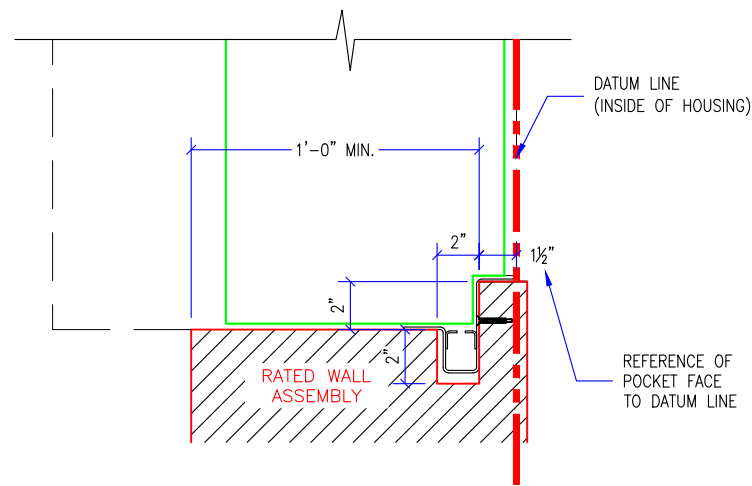
5 M4000 TYPICAL HEADBOX & SIDEGUIDE DETAIL
SCALE: 1" = 1'-0"



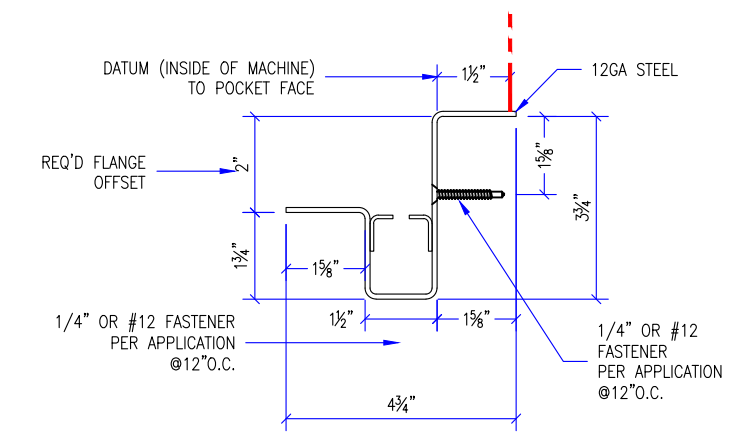
4 M4000 TYPICAL HEADBOX & SIDEGUIDE DETAIL
SCALE: 1" = 1'-0"



3 M4000 HOUSING DETAIL
SCALE: 1 1/2" = 1'-0"



2 M4000 TYPICAL SIDEGUIDE DETAIL
SCALE: 1 1/2" = 1'-0"



1 M4000 SIDEGUIDE DETAIL
SCALE: 3" = 1'-0"

THESE DRAWINGS SHOW OUR INTERPRETATION OF THE PRINCIPAL PLANS AND SPECIFICATIONS. THEY ARE SUBMITTED AS CHECK PRINTS REQUIRING REVIEW AND POSSIBLE REVISIONS TO DETAILS AND/OR DIMENSIONS. BEFORE FABRICATION OF MATERIALS CAN BEGIN, DRAWING PACKAGE MUST MATCH O.P.M. ORDER AND BE RETURNED SIGNED AND DATED. IF THERE ARE SIZE DISCREPANCIES BETWEEN THIS DRAWING PACKAGE AND O.P.M. ORDER, THESE DRAWING SUPERCEDE O.P.M. DIMENSIONS. IF CONSIDERABLY DIFFERENT, A RE-SUBMITAL OF O.P.M. ORDER WILL BE REQUIRED. THIS SIGNATURE INDICATES PURCHASER'S FULL ACCEPTANCE OF DETAILS SHOWN AND THE PRODUCT IN CONFORMANCE TO SAME. THESE DESIGNS AND DRAWINGS ARE THE EXCLUSIVE PROPERTY OF SMOKE GUARD, INC. AND ARE NOT TO BE USED OR DUPLICATED WITHOUT PERMISSIONS.

REVISION		
REVISION NUMBER	REVISION DATE	REVISION DESCRIPTION
D1	3.13.19	INITIAL RELEASE
---	---	---

QUOTE: -----
CONFIGURATION: -----
PROJECT: -----
DIST.: -----

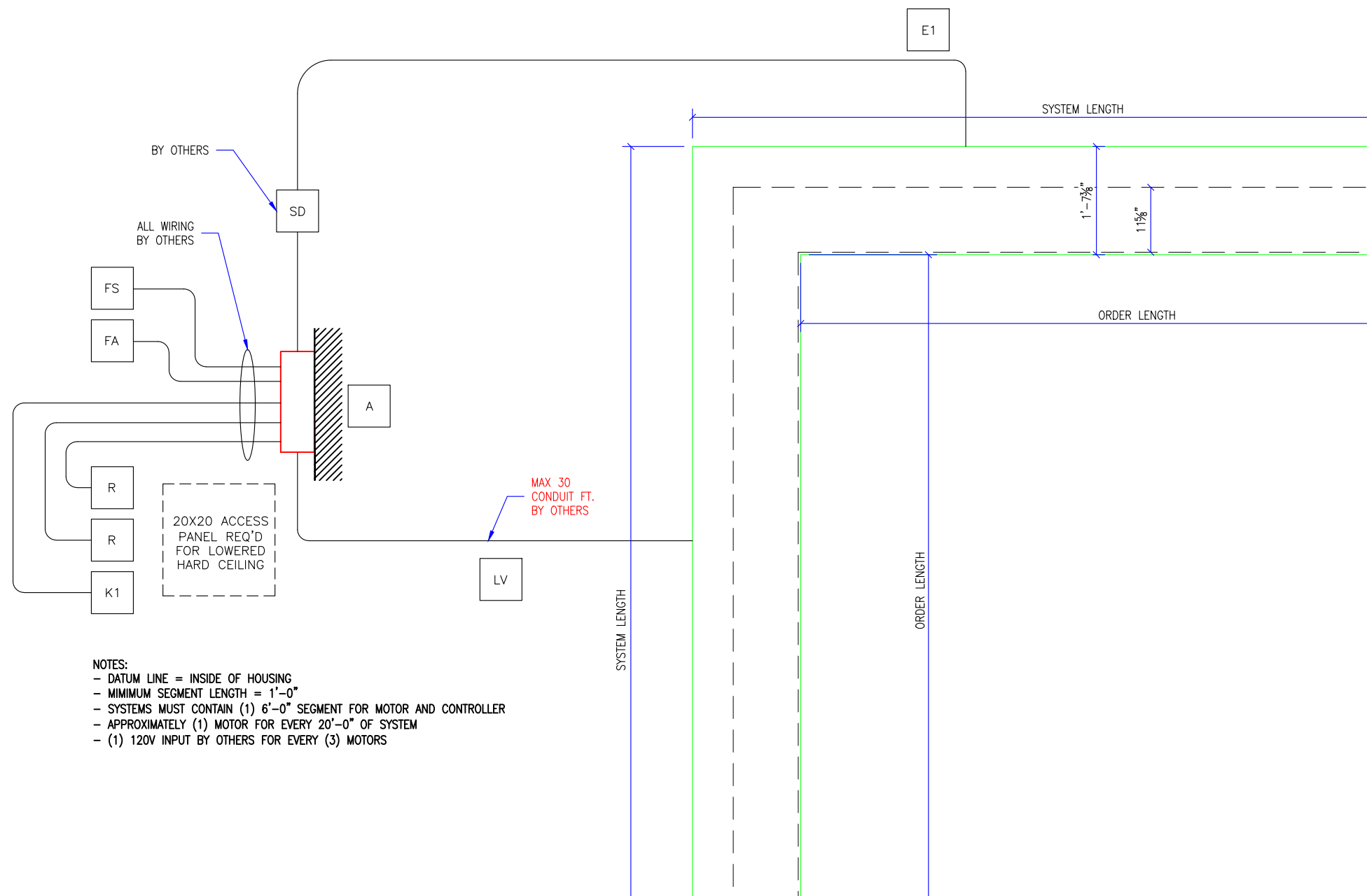
DESIGN SET: D1	SIZE B
MODEL: M4000	SHEET
SHEET TITLE: M4000 TYPICAL DETAILS	
DRAWN: TLM	3.13.2019
	4 OF 5



287 N. Maple Grove
Boise, ID 83704
800.574.0330
www.smokeguard.com

- LEGEND:
- [A] MAIN, CONTROLLER (18"x14"x6"), PROVIDE ACCESS
 - [LV] LOW VOLTAGE, MAX 30 CONDUIT FT. BY OTHERS
 - [SD] SERVICE DISCONNECT, 120VAC, 20A BY OTHERS
 - [E1] HIGH VOLTAGE #1, 120V
 - [E2] HIGH VOLTAGE #2, 120V
 - [E3] HIGH VOLTAGE #3, 120V
 - [K] KEYED TEST DEPLOY SWITCH, BY S.G.
 - [R] RETRACT SWITCH
 - [FA] TO FIRE ALARM
 - [FS] TO FSCS
 - (H#) END OF HOUSING
 - (SG#) DATUM LINE, INSIDE OF HOUSING

- GENERAL NOTES:
1. SMOKE GUARD FIRE RATED UNITS (HOUSINGS & SIDE GUIDES) TO BE MOUNTED TO A FINISHED, FIRE RATED ASSEMBLY OR STRUCTURE PER YOUR APPLICATION.
 2. CLIENT TO PROVIDE CONTINUOUS MOUNTING SURFACE FOR STRUCTURAL AND SHEET METAL ATTACHMENT.
 3. TOLERANCE: FLOOR TO CEILING VARIANCE MUST BE WITHIN +/- 1/2" ACROSS LENGTH OF MACHINE..
 4. ORDER LENGTHS TO BE AT 1/4" INCREMENTS ONLY.
 5. DIMENSIONS TO NOT INCLUDE HEADS OF EXTERNAL FASTENERS.
 6. 12 GA. STEEL TOP MOUNTING PLATE
 7. CONTROLLER CONDUIT BY OTHERS
 8. CONTROLLER CABLE PROVIDED
 9. PROVIDE ACCESS TO CONTROLLER
 10. CONTROLLER MOUNTING SUBSTRATE BY OTHERS
 11. MAX 30 CONDUIT FEET FROM MAIN CONTROLLER TO HOUSING
 12. FIRE RATING FOR ENCLOSURE ABOVE HOUSING DESIGNED BY OTHERS.
 13. STATIC/DYNAMIC SYSTEM WEIGHT, 40 LBS/FT.
 14. 4"-6" CLEARANCE REQ'D AT CURTAIN TRAY FOR INSTALLATION AND SERVICE
 15. INTERNAL MOTORS ARE ACCESSIBLE THROUGH HOUSING OPENING WHEN UNIT IS DEPLOYED.



- NOTES:
- DATUM LINE = INSIDE OF HOUSING
 - MINIMUM SEGMENT LENGTH = 1'-0"
 - SYSTEMS MUST CONTAIN (1) 6'-0" SEGMENT FOR MOTOR AND CONTROLLER
 - APPROXIMATELY (1) MOTOR FOR EVERY 20'-0" OF SYSTEM
 - (1) 120V INPUT BY OTHERS FOR EVERY (3) MOTORS

1 M4000 ELECTRICAL DETAILS
SCALE: 1/2" = 1'-0"

REVISION

REVISION NUMBER	REVISION DATE	REVISION DESCRIPTION
D1	3.13.19	INITIAL RELEASE
----	----	----

QUOTE: ----
CONFIGURATION: ----
PROJECT: ----
DIST.: ----

DESIGN SET: D1

SIZE
B

MODEL: M4000

SHEET TITLE:
M4000 ELECTRICAL DETAL

SHEET
5 OF 5

DRAWN: TLM 3.13.2019

THESE DRAWINGS SHOW OUR INTERPRETATION OF THE PRINCIPAL PLANS AND SPECIFICATIONS. THEY ARE SUBMITTED AS CHECK PRINTS REQUIRING REVIEW AND POSSIBLE REVISIONS TO DETAILS AND/OR DIMENSIONS. BEFORE FABRICATION OF MATERIALS CAN BEGIN, DRAWING PACKAGE MUST MATCH O.P.M. ORDER AND BE RETURNED SIGNED AND DATED. IF THERE ARE SIZE DISCREPANCIES BETWEEN THIS DRAWING PACKAGE AND O.P.M. ORDER, THESE DRAWING SUPERCEDE O.P.M. DIMENSIONS. IF CONSIDERABLY DIFFERENT, A RE-SUBMITTAL OF O.P.M. ORDER WILL BE REQUIRED. THIS SIGNATURE INDICATES PURCHASER'S FULL ACCEPTANCE OF DETAILS SHOWN AND THE PRODUCT IN CONFORMANCE TO SAME. THESE DESIGNS AND DRAWINGS ARE THE EXCLUSIVE PROPERTY OF SMOKE GUARD, INC. AND ARE NOT TO BE USED OR DUPLICATED WITHOUT PERMISSIONS.

PAPER SIZE: 11 X 17