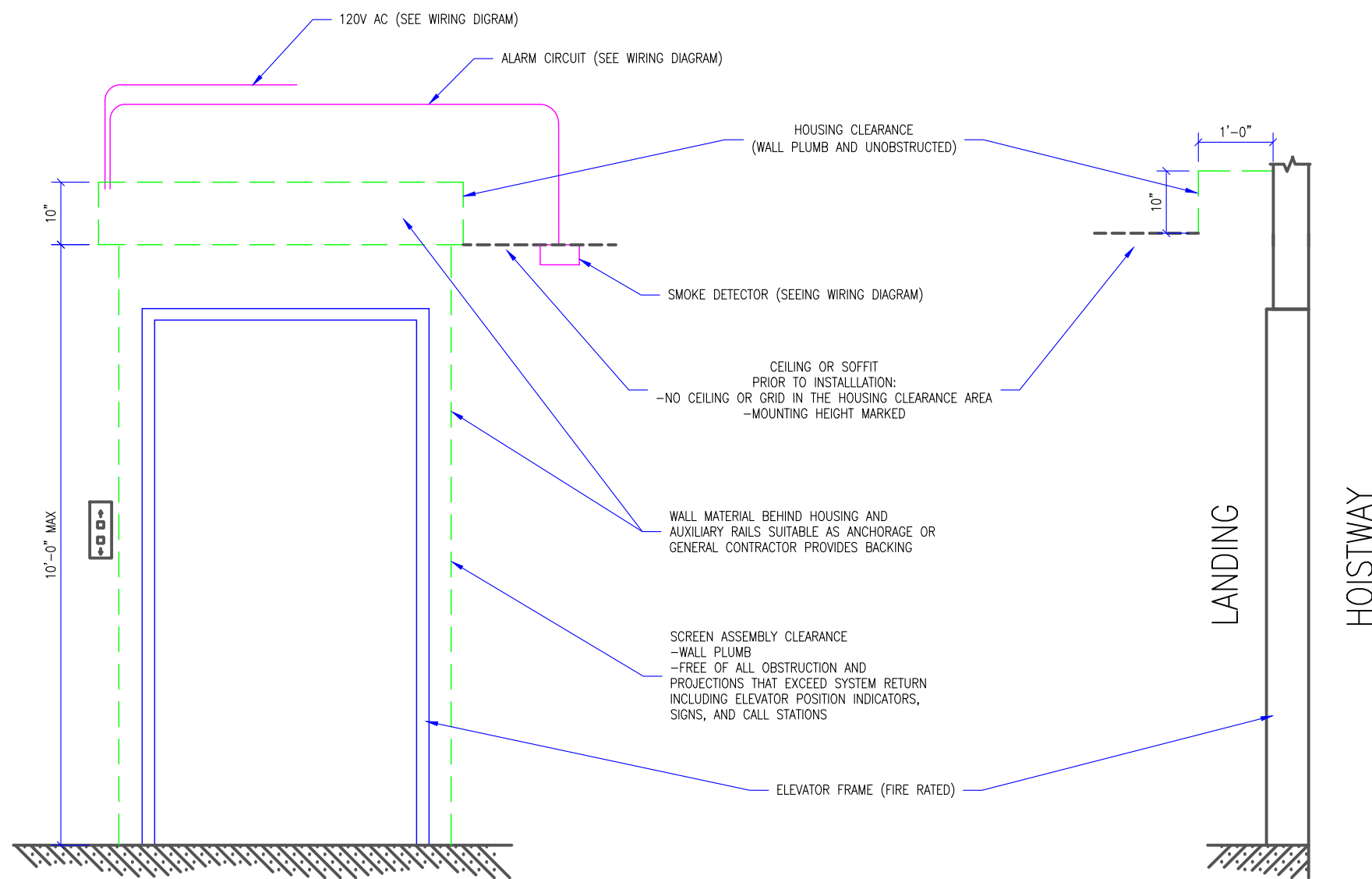


- GENERAL NOTES:
- SMOKE GUARD FIRE RATED UNITS (HOUSINGS & SIDE GUIDES) TO BE MOUNTED TO A FINISHED, FIRE RATED ASSEMBLY OR STRUCTURE PER YOUR APPLICATION.
 - CLIENT TO PROVIDE CONTINUOUS MOUNTING SURFACE FOR STRUCTURAL AND SHEET METAL ATTACHMENT.
 - TOLERANCE: FLOOR TO CEILING VARIANCE MUST BE WITHIN +/- 1/2" ACROSS LENGTH OF MACHINE..
 - ORDER LENGTHS TO BE AT 1/4" INCREMENTS ONLY.
 - DIMENSIONS DO NOT INCLUDE HEADS OF EXTERNAL FASTENERS.
 - 12 GA. STEEL TOP MOUNTING PLATE
 - CONTROLLER CONDUIT BY OTHERS
 - CONTROLLER CABLE PROVIDED
 - PROVIDE ACCESS TO CONTROLLER
 - CONTROLLER MOUNTING SUBSTRATE BY OTHERS
 - MAX 30 CONDUIT FEET FROM MAIN CONTROLLER TO HOUSING
 - FIRE RATING FOR ENCLOSURE ABOVE HOUSING DESIGNED BY OTHERS.
 - STATIC/DYNAMIC SYSTEM WEIGHT, 40 LBS/FT.
 - 4"-6" CLEARANCE REQ'D AT CURTAIN TRAY FOR INSTALLATION AND SERVICE
 - INTERNAL MOTORS ARE ACCESSIBLE THROUGH HOUSING OPENING WHEN UNIT IS DEPLOYED.



LANDING ELEVATION

SECTION

1 M600 ELEVATION DETAILS
SCALE: 1/2" = 1'-0"

REVISION

REVISION NUMBER	REVISION DATE	REVISION DESCRIPTION
D1	5.17.19	INITIAL RELEASE
----	----	----

QUOTE: ----
CONFIGURATION: ----
PROJECT: ----
DIST.: ----

DESIGN SET: D1

SIZE
B

MODEL: M600

SHEET TITLE:
M200 ELEVATION DETAILS

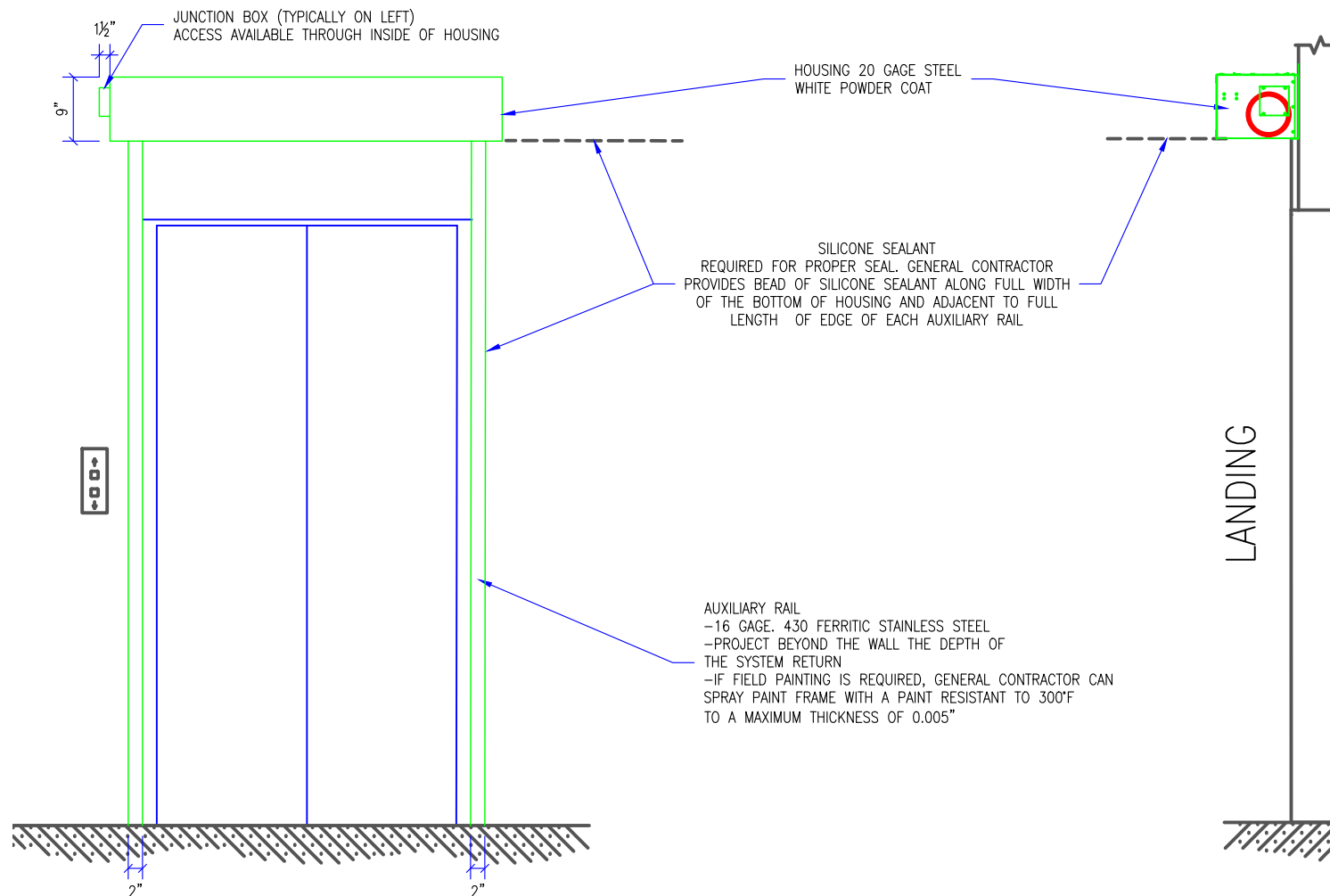
SHEET

1 OF 4

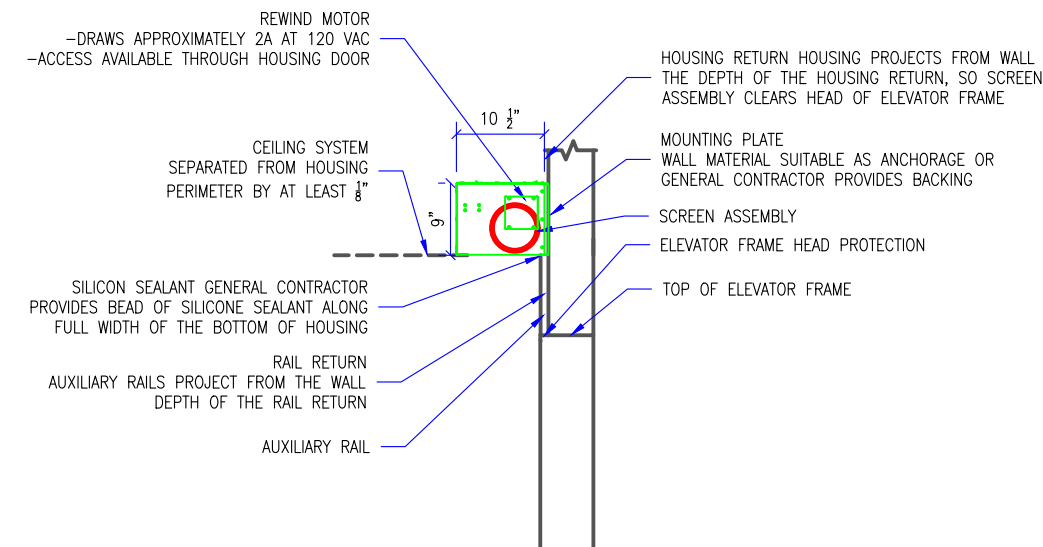
DRAWN: TLM 6.14.2019

THESE DRAWINGS SHOW OUR INTERPRETATION OF THE PRINCIPAL PLANS AND SPECIFICATIONS. THEY ARE SUBMITTED AS CHECK PRINTS REQUIRING REVIEW AND POSSIBLE REVISIONS TO DETAILS AND/OR DIMENSIONS. BEFORE FABRICATION OF MATERIALS CAN BEGIN, DRAWING PACKAGE MUST MATCH O.P.M. ORDER AND BE RETURNED SIGNED AND DATED. IF THERE ARE SIZE DISCREPANCIES BETWEEN THIS DRAWING PACKAGE AND O.P.M. ORDER, THESE DRAWING SUPERCEDE O.P.M. DIMENSIONS. IF CONSIDERABLY DIFFERENT, A RE-SUBMITTAL OF O.P.M. ORDER WILL BE REQUIRED. THIS SIGNATURE INDICATES PURCHASER'S FULL ACCEPTANCE OF DETAILS SHOWN AND THE PRODUCT IN CONFORMANCE TO SAME. THESE DESIGNS AND DRAWINGS ARE THE EXCLUSIVE PROPERTY OF SMOKE GUARD, INC. AND ARE NOT TO BE USED OR DUPLICATED WITHOUT PERMISSIONS.

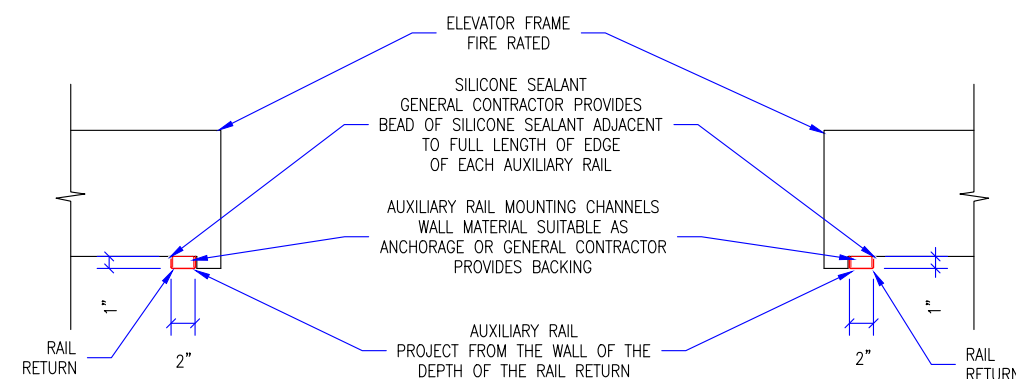
- GENERAL NOTES:
- SMOKE GUARD FIRE RATED UNITS (HOUSINGS & SIDE GUIDES) TO BE MOUNTED TO A FINISHED, FIRE RATED ASSEMBLY OR STRUCTURE PER YOUR APPLICATION.
 - CLIENT TO PROVIDE CONTINUOUS MOUNTING SURFACE FOR STRUCTURAL AND SHEET METAL ATTACHMENT.
 - TOLERANCE: FLOOR TO CEILING VARIANCE MUST BE WITHIN +/- 1/2" ACROSS LENGTH OF MACHINE..
 - ORDER LENGTHS TO BE AT 1/4" INCREMENTS ONLY.
 - DIMENSIONS DO NOT INCLUDE HEADS OF EXTERNAL FASTENERS.
 - 12 GA. STEEL TOP MOUNTING PLATE
 - CONTROLLER CONDUIT BY OTHERS
 - CONTROLLER CABLE PROVIDED
 - PROVIDE ACCESS TO CONTROLLER
 - CONTROLLER MOUNTING SUBSTRATE BY OTHERS
 - MAX 30 CONDUIT FEET FROM MAIN CONTROLLER TO HOUSING
 - FIRE RATING FOR ENCLOSURE ABOVE HOUSING DESIGNED BY OTHERS.
 - STATIC/DYNAMIC SYSTEM WEIGHT, 40 LBS/FT.
 - 4"-6" CLEARANCE REQ'D AT CURTAIN TRAY FOR INSTALLATION AND SERVICE
 - INTERNAL MOTORS ARE ACCESSIBLE THROUGH HOUSING OPENING WHEN UNIT IS DEPLOYED.



1 M600 READY STATE DETAILS
SCALE: 1/2" = 1'-0"



2 M600 HEADBOX DETAIL
SCALE: 1/2" = 1'-0"



3 M600 SIDE GUIDE DETAILS
SCALE: 3/4" = 1'-0"

REVISION

REVISION NUMBER	REVISION DATE	REVISION DESCRIPTION
D1	5.17.19	INITIAL RELEASE
---	---	---
---	---	---

QUOTE: ----
CONFIGURATION: ----
PROJECT: ----
DIST.: ----

DESIGN SET: D1

SIZE
B

MODEL: M600

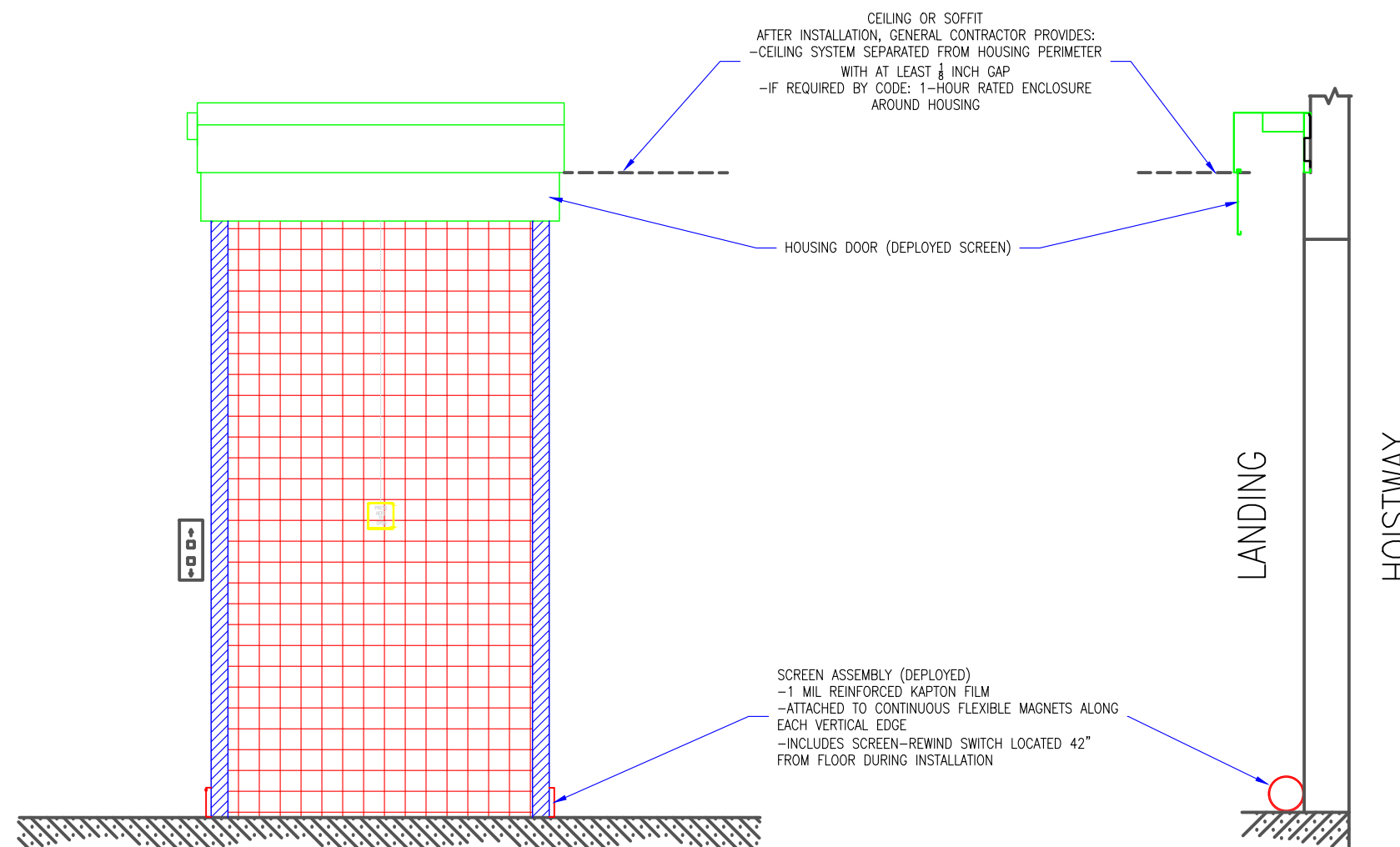
SHEET TITLE:
M200 READY STATE DETAILS

SHEET
2 OF 4

DRAWN: TLM 6.14.2019

THESE DRAWINGS SHOW OUR INTERPRETATION OF THE PRINCIPAL PLANS AND SPECIFICATIONS. THEY ARE SUBMITTED AS CHECK PRINTS REQUIRING REVIEW AND POSSIBLE REVISIONS TO DETAILS AND/OR DIMENSIONS. BEFORE FABRICATION OF MATERIALS CAN BEGIN, DRAWING PACKAGE MUST MATCH O.P.M. ORDER AND BE RETURNED SIGNED AND DATED. IF THERE ARE SIZE DISCREPANCIES BETWEEN THIS DRAWING PACKAGE AND O.P.M. ORDER, THESE DRAWINGS SUPERCEDE O.P.M. DIMENSIONS. IF CONSIDERABLY DIFFERENT, A RE-SUBMITAL OF O.P.M. ORDER WILL BE REQUIRED. THIS SIGNATURE INDICATES PURCHASER'S FULL ACCEPTANCE OF DETAILS SHOWN AND THE PRODUCT IN CONFORMANCE TO SAME. THESE DESIGNS AND DRAWINGS ARE THE EXCLUSIVE PROPERTY OF SMOKE GUARD, INC. AND ARE NOT TO BE USED OR DUPLICATED WITHOUT PERMISSIONS.

- GENERAL NOTES:
- SMOKE GUARD FIRE RATED UNITS (HOUSINGS & SIDE GUIDES) TO BE MOUNTED TO A FINISHED, FIRE RATED ASSEMBLY OR STRUCTURE PER YOUR APPLICATION.
 - CLIENT TO PROVIDE CONTINUOUS MOUNTING SURFACE FOR STRUCTURAL AND SHEET METAL ATTACHMENT.
 - TOLERANCE: FLOOR TO CEILING VARIANCE MUST BE WITHIN +/- 1/2" ACROSS LENGTH OF MACHINE..
 - ORDER LENGTHS TO BE AT 1/4" INCREMENTS ONLY.
 - DIMENSIONS DO NOT INCLUDE HEADS OF EXTERNAL FASTENERS.
 - 12 GA. STEEL TOP MOUNTING PLATE
 - CONTROLLER CONDUIT BY OTHERS
 - CONTROLLER CABLE PROVIDED
 - PROVIDE ACCESS TO CONTROLLER
 - CONTROLLER MOUNTING SUBSTRATE BY OTHERS
 - MAX 30 CONDUIT FEET FROM MAIN CONTROLLER TO HOUSING
 - FIRE RATING FOR ENCLOSURE ABOVE HOUSING DESIGNED BY OTHERS.
 - STATIC/DYNAMIC SYSTEM WEIGHT, 40 LBS/FT.
 - 4"-6" CLEARANCE REQ.'D AT CURTAIN TRAY FOR INSTALLATION AND SERVICE
 - INTERNAL MOTORS ARE ACCESSIBLE THROUGH HOUSING OPENING WHEN UNIT IS DEPLOYED.



1 M600 DEPLOYED DETAIL
SCALE: 1/2" = 1'-0"

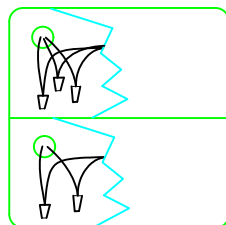
REVISION		
REVISION NUMBER	REVISION DATE	REVISION DESCRIPTION
D1	5.17.19	INITIAL RELEASE
----	----	----

QUOTE: ----
CONFIGURATION: ----
PROJECT: ----
DIST.: ----

DESIGN SET: D1	SIZE B
MODEL: M600	SHEET 3 OF 4
SHEET TITLE: M200 DEPLOYED DETAILS	
DRAWN: TLM	6.14.2019

THESE DRAWINGS SHOW OUR INTERPRETATION OF THE PRINCIPAL PLANS AND SPECIFICATIONS. THEY ARE SUBMITTED AS CHECK PRINTS REQUIRING REVIEW AND POSSIBLE REVISIONS TO DETAILS AND/OR DIMENSIONS. BEFORE FABRICATION OF MATERIALS CAN BEGIN, DRAWING PACKAGE MUST MATCH O.P.M. ORDER AND BE RETURNED SIGNED AND DATED. IF THERE ARE SIZE DISCREPANCIES BETWEEN THIS DRAWING PACKAGE AND O.P.M. ORDER, THESE DRAWING SUPERCEDE O.P.M. DIMENSIONS. IF CONSIDERABLY DIFFERENT, A RE-SUBMITTAL OF O.P.M. ORDER WILL BE REQUIRED. THIS SIGNATURE INDICATES PURCHASER'S FULL ACCEPTANCE OF DETAILS SHOWN AND THE PRODUCT IN CONFORMANCE TO SAME. THESE DESIGNS AND DRAWINGS ARE THE EXCLUSIVE PROPERTY OF SMOKE GUARD, INC. AND ARE NOT TO BE USED OR DUPLICATED WITHOUT PERMISSIONS.

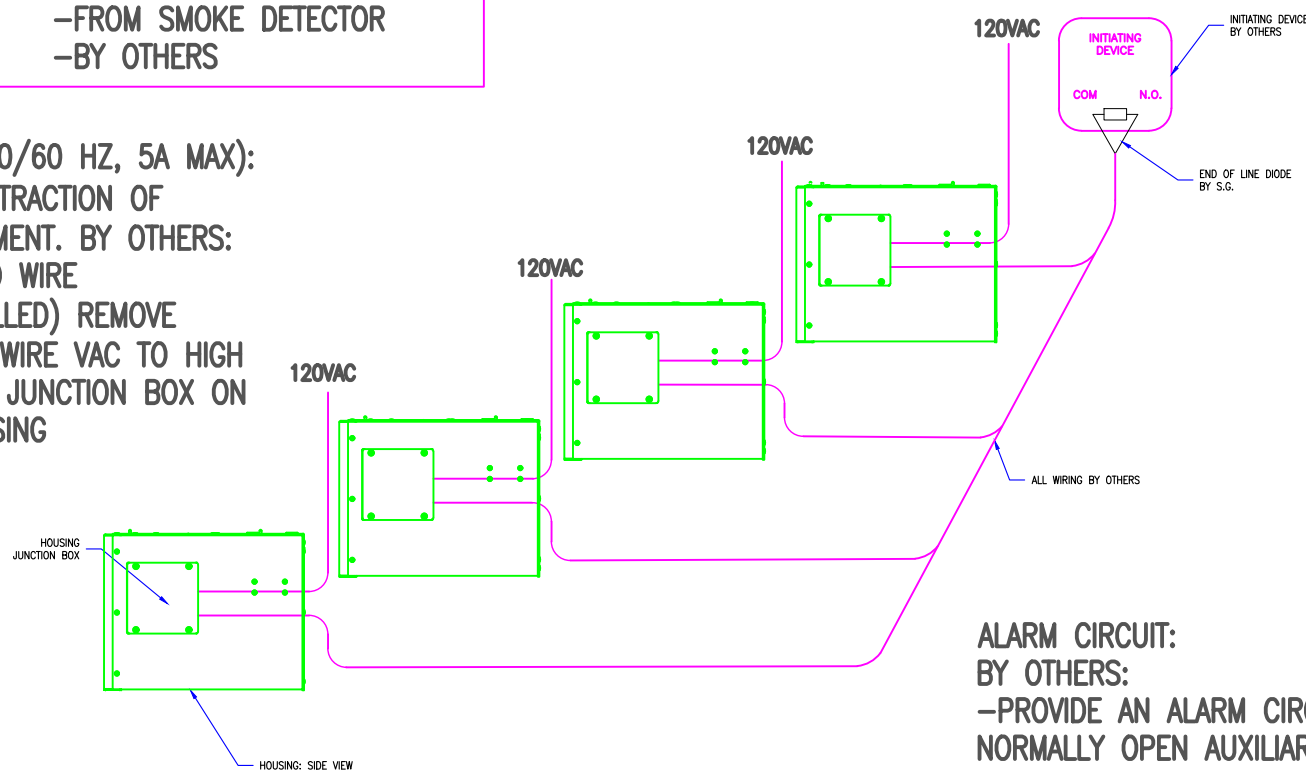
**HOUSING JUNCTION BOX DETAIL
(ACCESS AVAILABLE THROUGH INSIDE OF HOUSING)**



100-240 VAC BY OTHERS
GREEN--YELLOW--GROUND
BLUE--NEUTRAL
BROWN--HOT

LOW VOLTAGE CONNECTIONS
-FROM SMOKE DETECTOR
-BY OTHERS

100-240VAC POWER (50/60 HZ, 5A MAX):
FOR MOTOR REWIND/RETRACTION OF
SCREEN AFTER DEPLOYMENT. BY OTHERS:
-PROVIDE CONDUIT AND WIRE
-(AFTER UNIT IS INSTALLED) REMOVE
TEMPORARY PLUG AND WIRE VAC TO HIGH
VOLTAGE WIRES IN THE JUNCTION BOX ON
THE SIDE OF THE HOUSING
-PROVIDE GROUND



HOUSING JUNCTION BOX
(ACCESS THROUGH INSIDE
OF HOUSING)

THIS DRAWING ILLUSTRATES THAT UP TO
4 HOUSINGS CAN BE WIRED, IN PARALLEL,
TO THE SAME END-OF-DIODE AT AN
INITIATING DEVICE (SMOKE DETECTOR)
AUXILIARY CONTACT.

SMOKE DETECTOR (UL 268 COMPLIANT) BY OTHERS:
-PROVIDE A NORMALLY OPEN AUXILIARY CONTACT THAT IS
ACTIVATED WHEN THE SMOKE DETECTOR GOES INTO ALARM. THIS
CONTACT DOES NOT ACTIVATE ON GENERAL BUILDING ALARM.
-(WHEN THERE ARE MULTIPLE-UNIT SYSTEM IN A COMMON AREA
THAT ARE ACTIVATED BY A SINGLE SMOKE DETECTOR); WIRE UP
TO 4 SMOKE GUARD UNITS TO A SINGLE SMOKE DETECTOR,
IN PARALLEL. MULTIPLE UNITS ON A COMMON FLOOR THAT ARE
ACTIVATED BY THE SAME SMOKE DETECTOR REQUIRE ALARM
CIRCUIT WIRING FROM THE DETECTOR TO EACH UNIT. THE PRINTED
CIRCUIT BOARD IN EACH HOUSING MUST SEE THE END-OF-LINE
DIODE ON THE SMOKE DETECTOR.

END-OF-LINE DIODE:
BY OTHERS:
-INSTALL END-OF-LINE DIODE
(FURNISHED BY SMOKE GUARD)
AT INITIATING DEVICE.
-IN PARALLEL WITH THE NORMALLY
OPEN AUXILIARY CONTACT.

ALARM CIRCUIT:
BY OTHERS:
-PROVIDE AN ALARM CIRCUIT FROM THE
NORMALLY OPEN AUXILIARY CONTACT OF THE
SMOKE DETECTOR TO THE LOW VOLTAGE WIRES
IN THE JUNCTION BOX ON THE SIDE OF THE
HOUSING, USING STRANDED WIRES, IN RACEWAYS
OR CONDUIT.
-(AFTER UNIT IS INSTALLED) TERMINATE THE
SMOKE DETECTOR WIRES TO LOW VOLTAGE
WIRES IN THE JUNCTION BOX ON THE SIDE OF
THE HOUSING.

- LEGEND:
- A MAIN CONTROLLER (18"x14"x6"), PROVIDE ACCESS
 - LV LOW VOLTAGE, MAX 30 CONDUIT FT. BY OTHERS
 - SD SERVICE DISCONNECT, 120VAC,20A BY OTHERS
 - E1 HIGH VOLTAGE #1, 120V
 - E2 HIGH VOLTAGE #2, 120V
 - E3 HIGH VOLTAGE #3, 120V
 - K KEYED TEST DEPLOY SWITCH, BY S.G.
 - R RETRACT SWITCH
 - FA TO FIRE ALARM
 - FS TO FSCS
 - (H#) END OF HOUSING
 - (SG#) DATUM LINE, INSIDE OF HOUSING

- GENERAL NOTES:
1. SMOKE GUARD FIRE RATED UNITS (HOUSINGS & SIDE GUIDES) TO BE MOUNTED TO A FINISHED, FIRE RATED ASSEMBLY OR STRUCTURE PER YOUR APPLICATION.
 2. CLIENT TO PROVIDE CONTINUOUS MOUNTING SURFACE FOR STRUCTURAL AND SHEET METAL ATTACHMENT.
 3. TOLERANCE: FLOOR TO CEILING VARIANCE MUST BE WITHIN +/- 1/2" ACROSS LENGTH OF MACHINE..
 4. ORDER LENGTHS TO BE AT 1/4" INCREMENTS ONLY.
 5. DIMENSIONS DO NOT INCLUDE HEADS OF EXTERNAL FASTENERS.
 6. 12 GA. STEEL TOP MOUNTING PLATE
 7. CONTROLLER CONDUIT BY OTHERS
 8. CONTROLLER CABLE PROVIDED
 9. PROVIDE ACCESS TO CONTROLLER
 10. CONTROLLER MOUNTING SUBSTRATE BY OTHERS
 11. MAX 30 CONDUIT FEET FROM MAIN CONTROLLER TO HOUSING
 12. FIRE RATING FOR ENCLOSURE ABOVE HOUSING DESIGNED BY OTHERS.
 13. STATIC/DYNAMIC SYSTEM WEIGHT, 40 LBS/FT.
 14. 4"-6" CLEARANCE REQ'D AT CURTAIN TRAY FOR INSTALLATION AND SERVICE
 15. INTERNAL MOTORS ARE ACCESSIBLE THROUGH HOUSING OPENING WHEN UNIT IS DEPLOYED.

REVISION

REVISION NUMBER	REVISION DATE	REVISION DESCRIPTION
D1	5.17.19	INITIAL RELEASE
----	----	----

QUOTE: ----
CONFIGURATION: ----
PROJECT: ----
DIST.: ----

DESIGN SET: D1

SIZE
B

MODEL: M600

SHEET TITLE:
M200 ELECTRICAL DETAIL

SHEET
4 OF 4

DRAWN: TLM 6.14.2019

1 M600 ELECTRICAL DETAILS
SCALE: N.T.S.

THESE DRAWINGS SHOW OUR INTERPRETATION OF THE PRINCIPAL PLANS AND SPECIFICATIONS. THEY ARE SUBMITTED AS CHECK PRINTS REQUIRING REVIEW AND POSSIBLE REVISIONS TO DETAILS AND/OR DIMENSIONS. BEFORE FABRICATION OF MATERIALS CAN BEGIN, DRAWING PACKAGE MUST MATCH O.P.M. ORDER AND BE RETURNED SIGNED AND DATED. IF THERE ARE SIZE DISCREPANCIES BETWEEN THIS DRAWING PACKAGE AND O.P.M. ORDER, THESE DRAWINGS SUPERCEDE O.P.M. DIMENSIONS. IF CONSIDERABLY DIFFERENT, A RE-SUBMITTAL OF O.P.M. ORDER WILL BE REQUIRED. THIS SIGNATURE INDICATES PURCHASER'S FULL ACCEPTANCE OF DETAILS SHOWN AND THE PRODUCT IN CONFORMANCE TO SAME. THESE DESIGNS AND DRAWINGS ARE THE EXCLUSIVE PROPERTY OF SMOKE GUARD, INC. AND ARE NOT TO BE USED OR DUPLICATED WITHOUT PERMISSIONS.

PAPER SIZE: 11 X 17