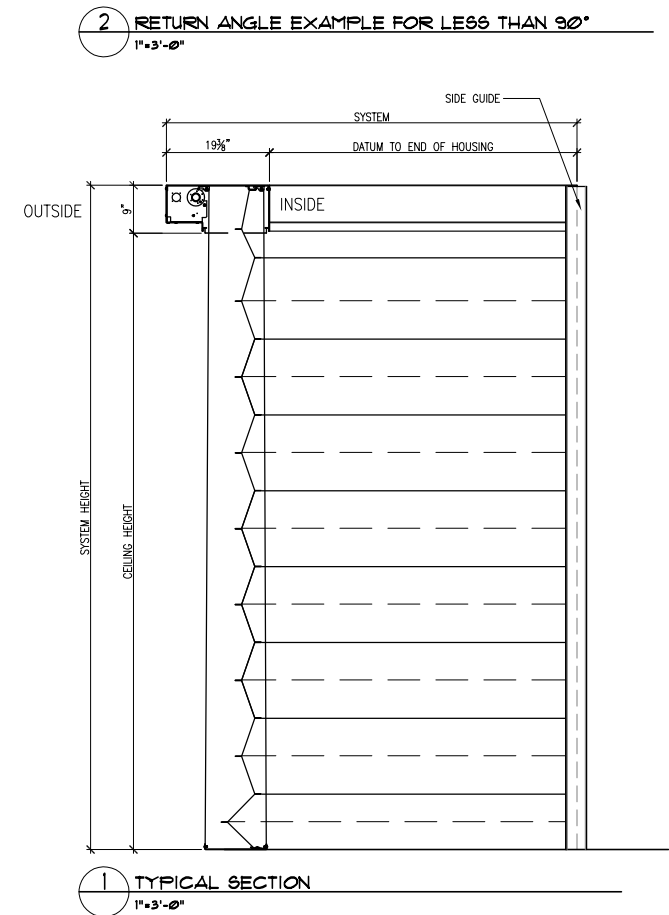


- NOTES:
- DATUM LINE = INSIDE OF HOUSING
 - MINIMUM TURN ANGLE 30°, MAXIMUM 90°
 - MINIMUM SEGMENT LENGTH = 1'-0"
 - SYSTEMS MUST CONTAIN (1) 6'-0" SEGMENT FOR MOTOR AND CONTROLLER
 - APPROXIMATELY (1) MOTOR FOR EVERY 20'-0" OF SYSTEM
 - (1) 120V INPUT BY OTHERS FOR EVERY (3) MOTORS
 - SYSTEM WEIGHT DYNAMIC/STATIC - 40 lb/ft



SG-M4000

DD1

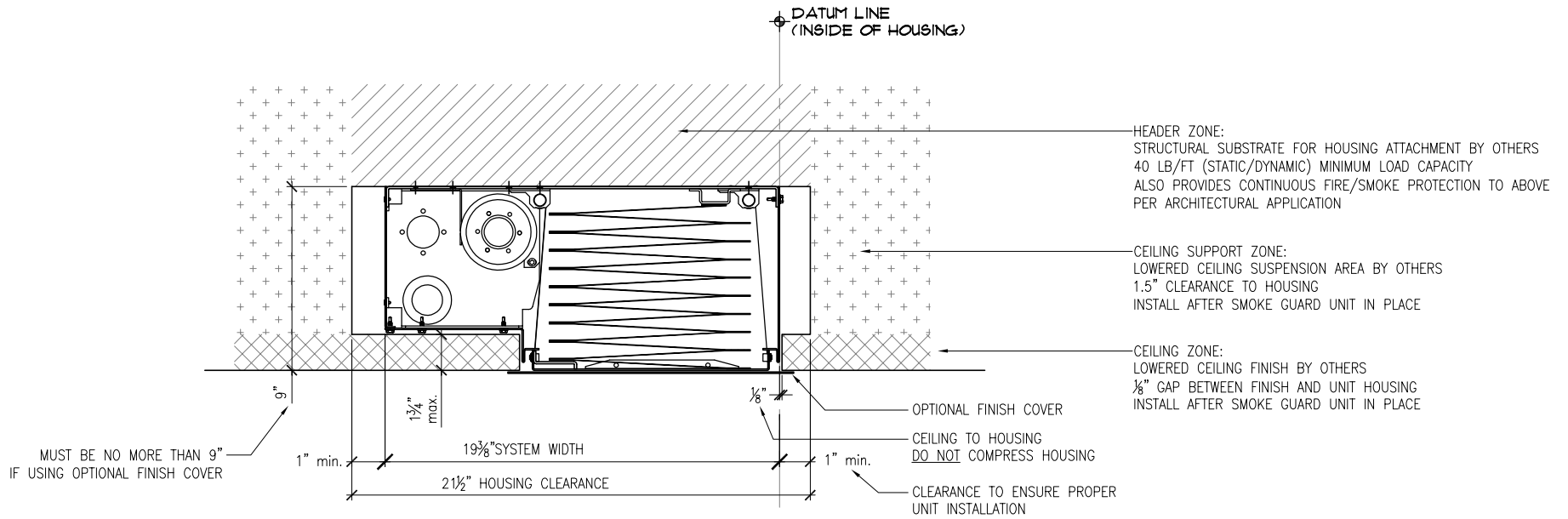
GENERIC
DESIGN DETAILS

M4000

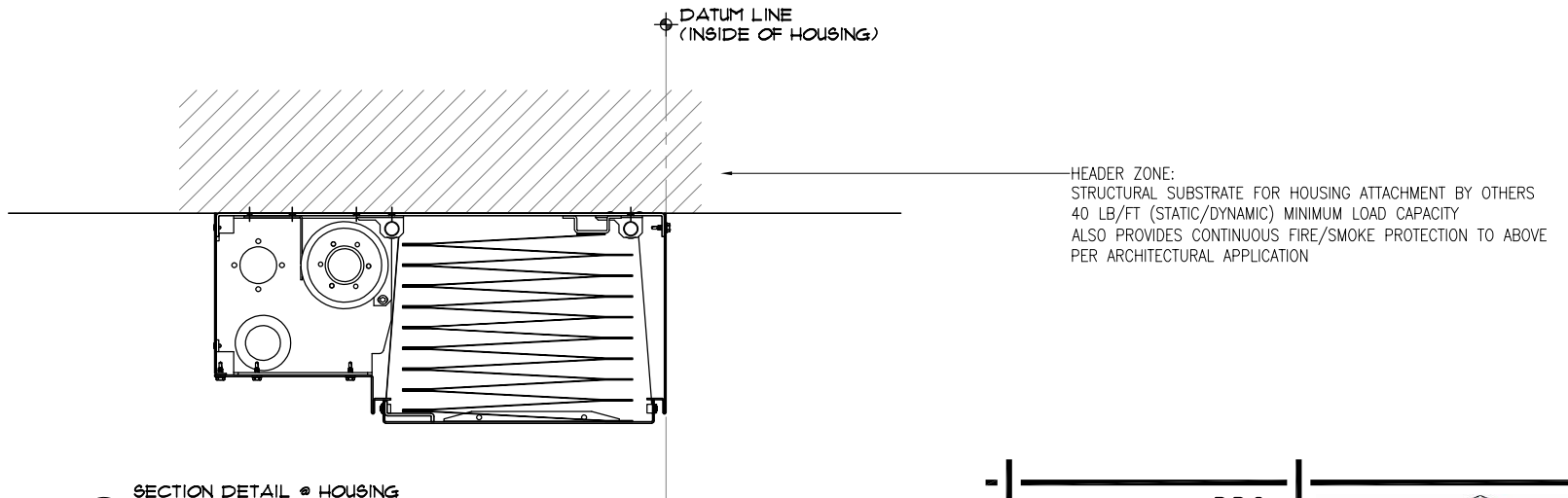
BY: HGK

10.6.2016





E SECTION DETAIL @ HOUSING
FINISH DETAIL CLEARANCES
1/2" x 1'-0"



D SECTION DETAIL @ HOUSING
MINIMUM MOUNTING REQUIREMENTS
1/2" x 1'-0"

SG-M4000

DD2

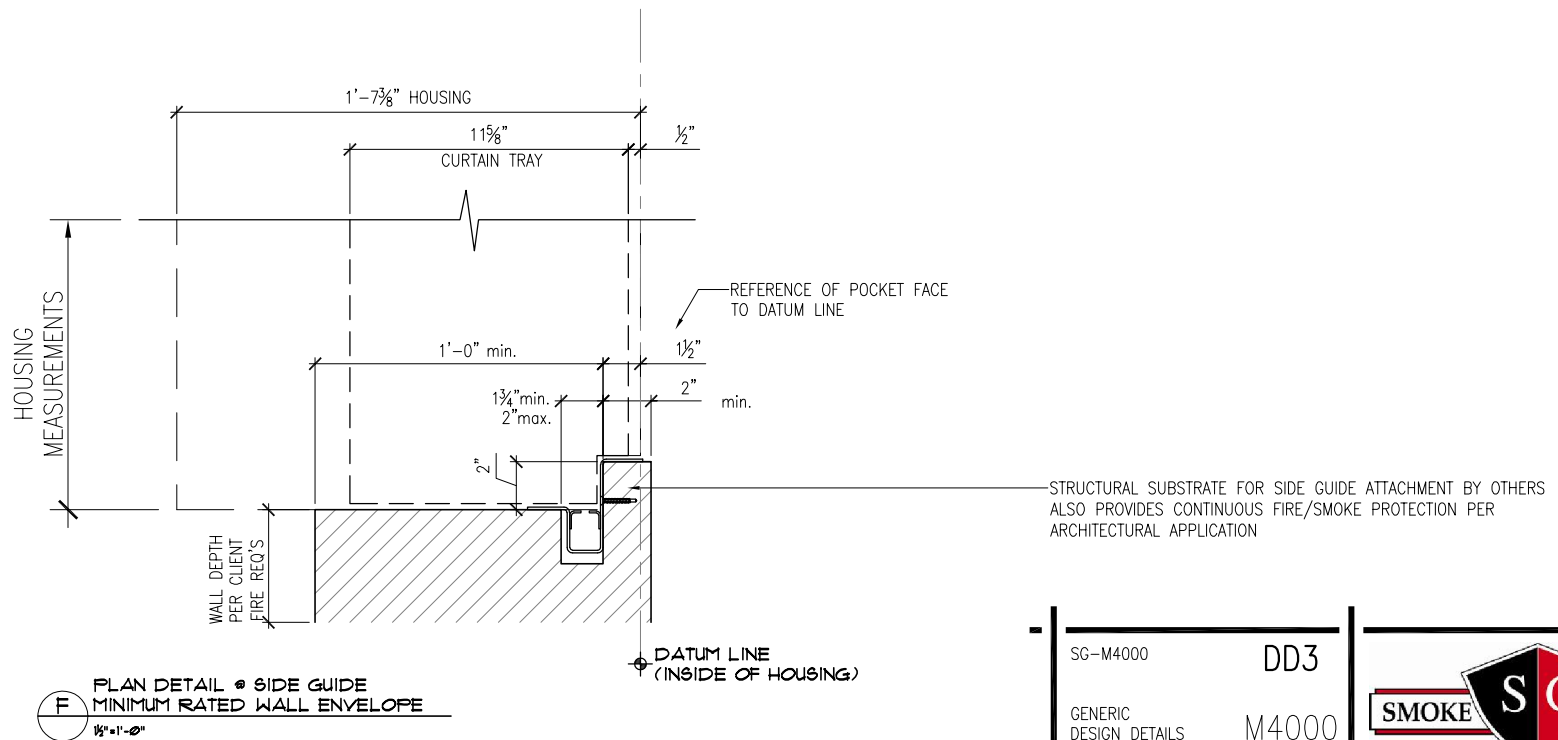
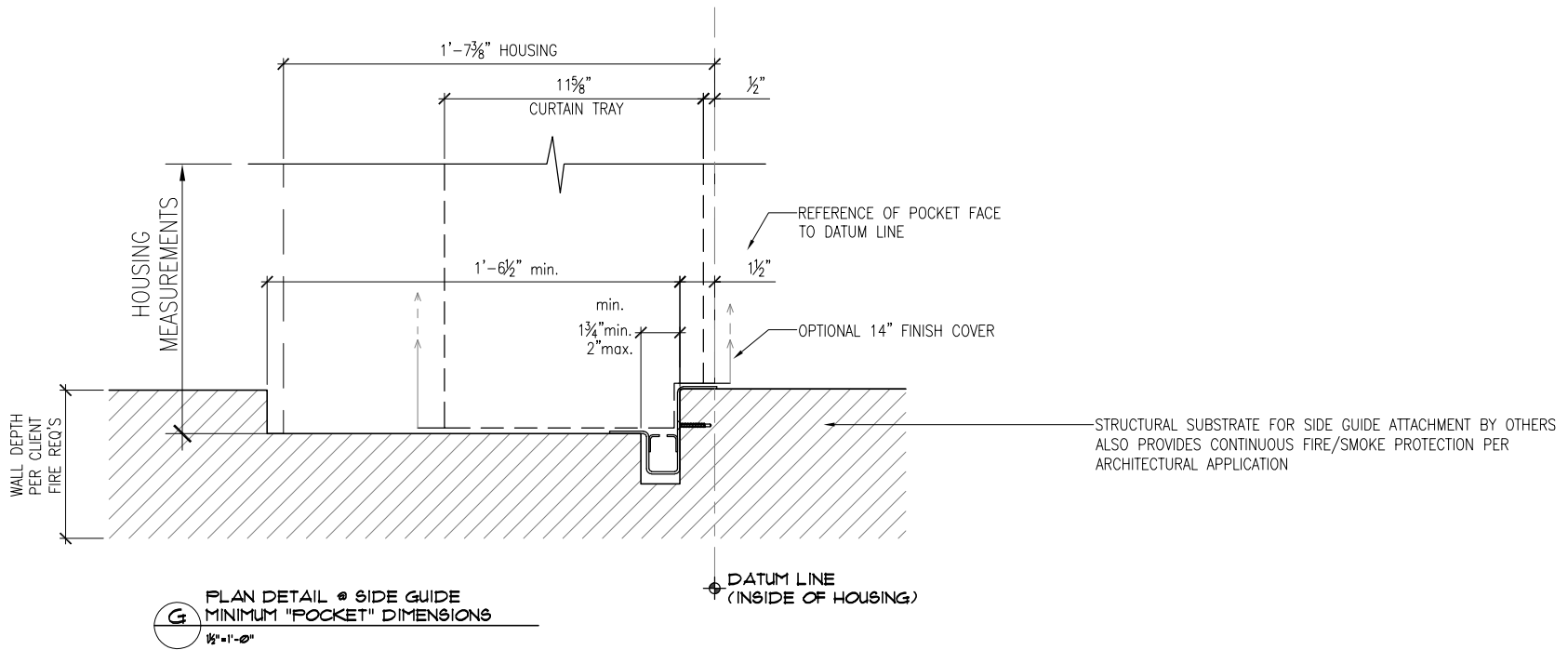
GENERIC
DESIGN DETAILS

M4000

BY: HGK

10.6.2016





SG-M4000

DD3

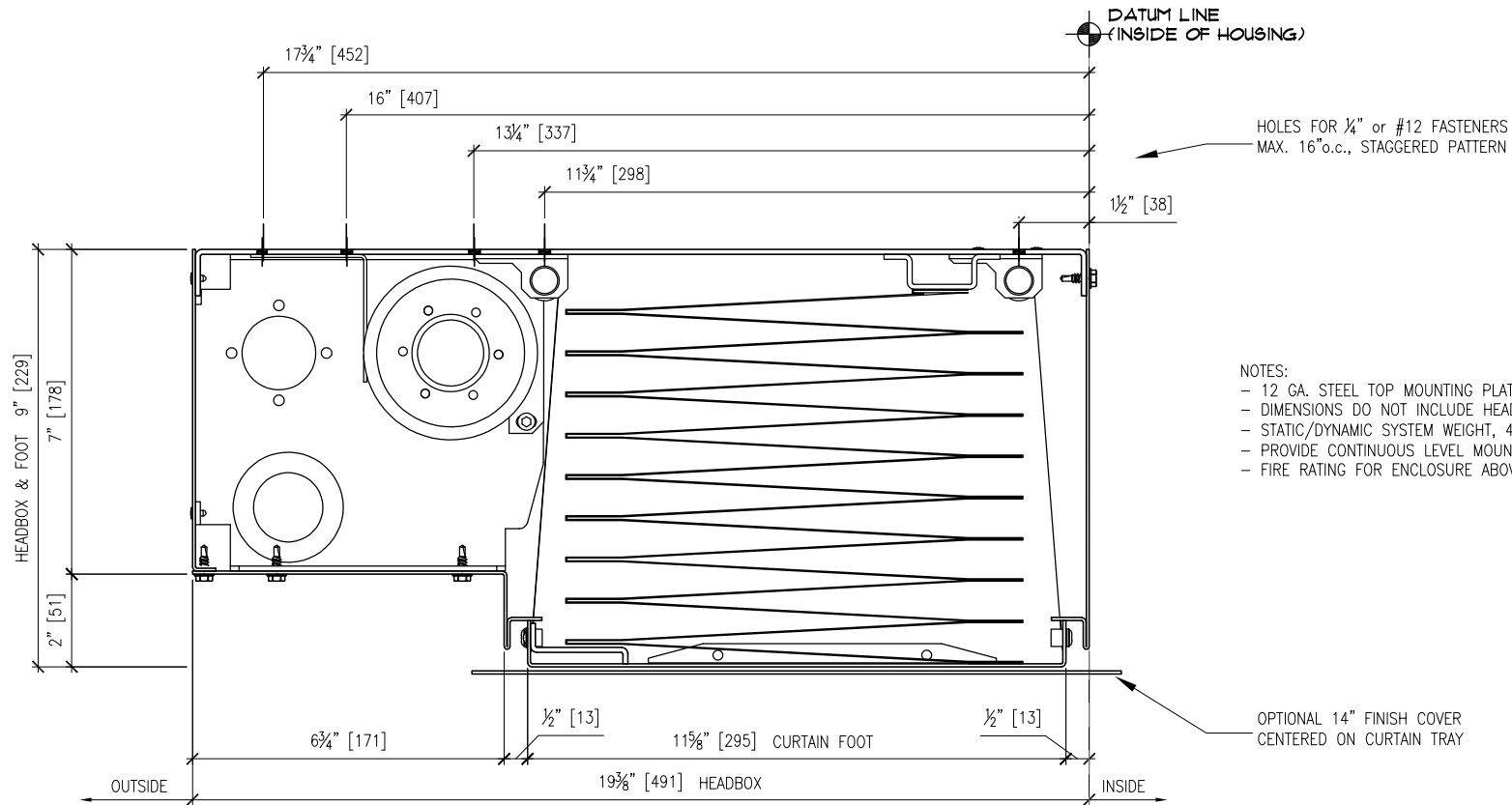
GENERIC DESIGN DETAILS

M4000

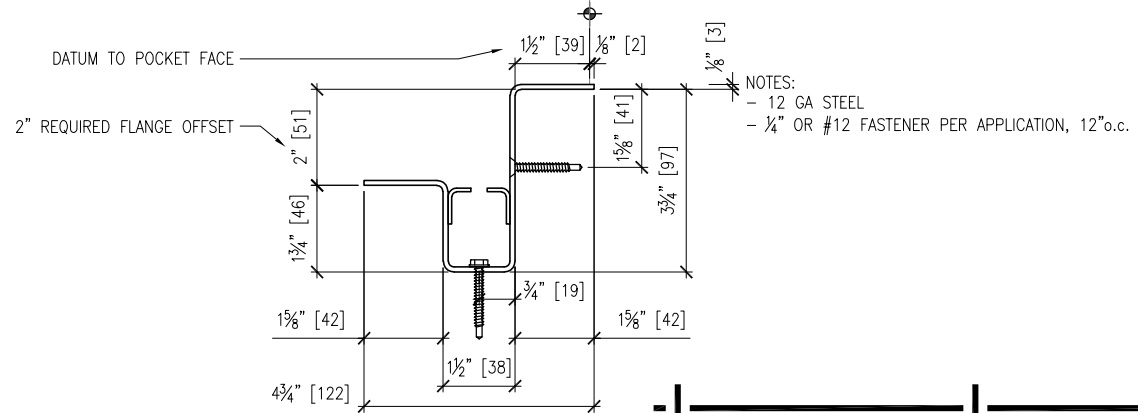
BY: HGK

10.6.2016





H HEADBOX - SECTION VIEW
3" x 1" - Ø"



J SIDE GUIDE - PLAN VIEW
3" x 1" - Ø" (IF APPLICABLE)

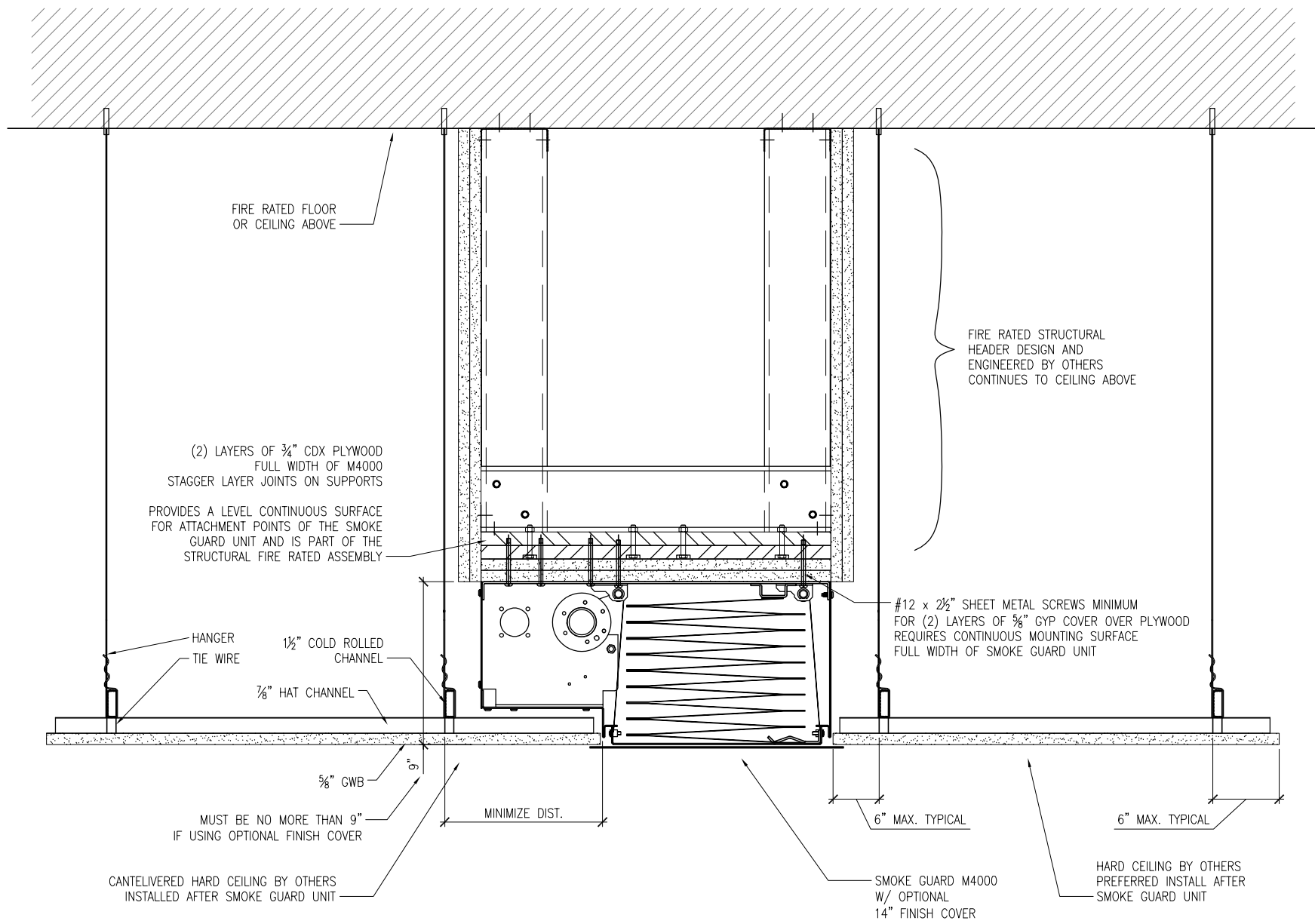
SG-M4000

DD4

GENERIC
DESIGN DETAILS
BY: HGK

M4000
10.6.2016





FIRE RATED FLOOR OR CEILING ABOVE

FIRE RATED STRUCTURAL HEADER DESIGN AND ENGINEERED BY OTHERS CONTINUES TO CEILING ABOVE

(2) LAYERS OF 3/4" CDX PLYWOOD FULL WIDTH OF M4000 STAGGER LAYER JOINTS ON SUPPORTS PROVIDES A LEVEL CONTINUOUS SURFACE FOR ATTACHMENT POINTS OF THE SMOKE GUARD UNIT AND IS PART OF THE STRUCTURAL FIRE RATED ASSEMBLY

#12 x 2 1/2" SHEET METAL SCREWS MINIMUM FOR (2) LAYERS OF 5/8" GYP COVER OVER PLYWOOD REQUIRES CONTINUOUS MOUNTING SURFACE FULL WIDTH OF SMOKE GUARD UNIT

HANGER TIE WIRE

1 1/2" COLD ROLLED CHANNEL

7/8" HAT CHANNEL

5/8" GWB

MUST BE NO MORE THAN 9" IF USING OPTIONAL FINISH COVER

MINIMIZE DIST.

6" MAX. TYPICAL

6" MAX. TYPICAL

CANTILEVERED HARD CEILING BY OTHERS INSTALLED AFTER SMOKE GUARD UNIT

SMOKE GUARD M4000 W/ OPTIONAL 14" FINISH COVER

HARD CEILING BY OTHERS PREFERRED INSTALL AFTER SMOKE GUARD UNIT

K GENERIC HEADER AND HARD CEILING APPLICATION
 1/2" = 1'-0"

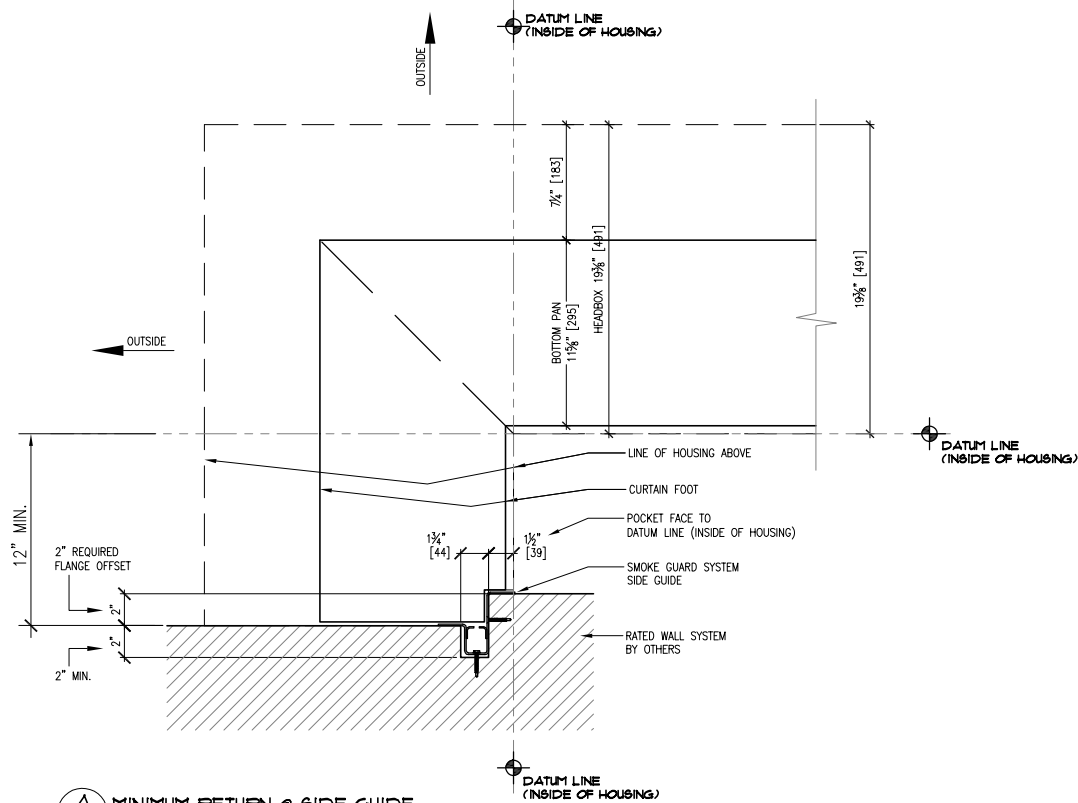
SG-M4000

DD5

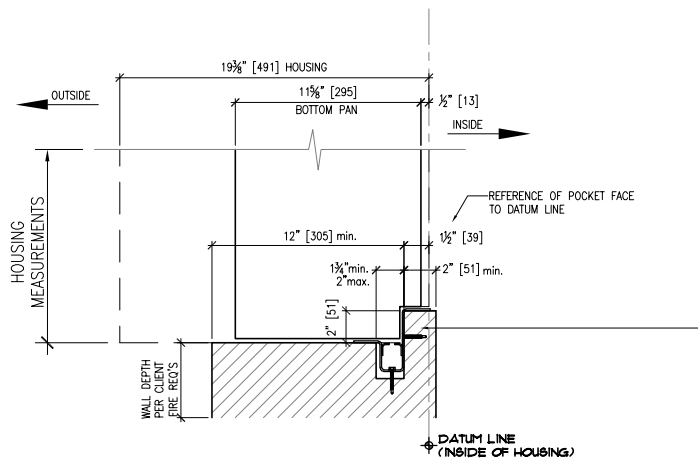
GENERIC DESIGN DETAILS
 BY: HGK

M4000
 10.6.2016

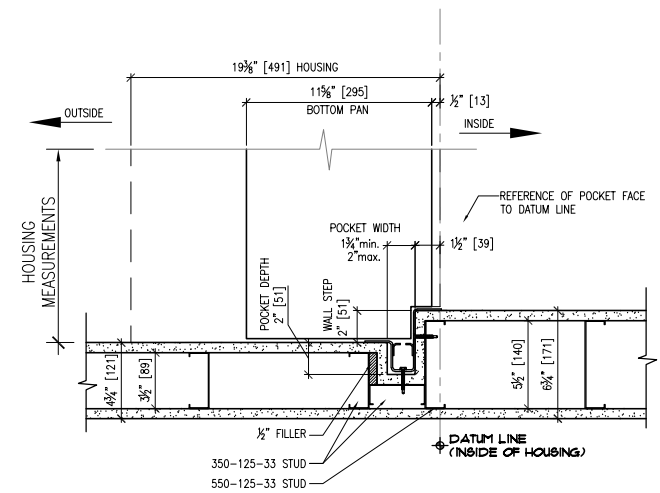




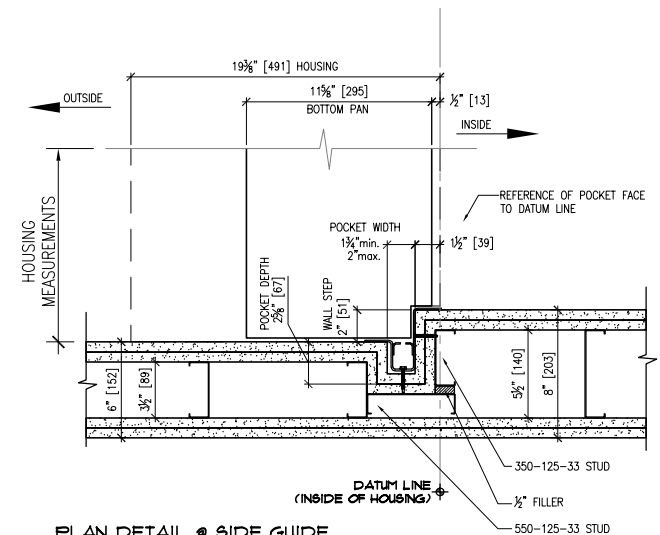
A MINIMUM RETURN @ SIDE GUIDE
1"=1'-0"



B PLAN DETAIL @ SIDE GUIDE
MINIMUM RATED WALL ENVELOPE
1"=1'-0"



C PLAN DETAIL @ SIDE GUIDE
1 LAYER WALL ASSEMBLY EXAMPLE
1"=1'-0"



D PLAN DETAIL @ SIDE GUIDE
2 LAYER WALL ASSEMBLY EXAMPLE
1"=1'-0"

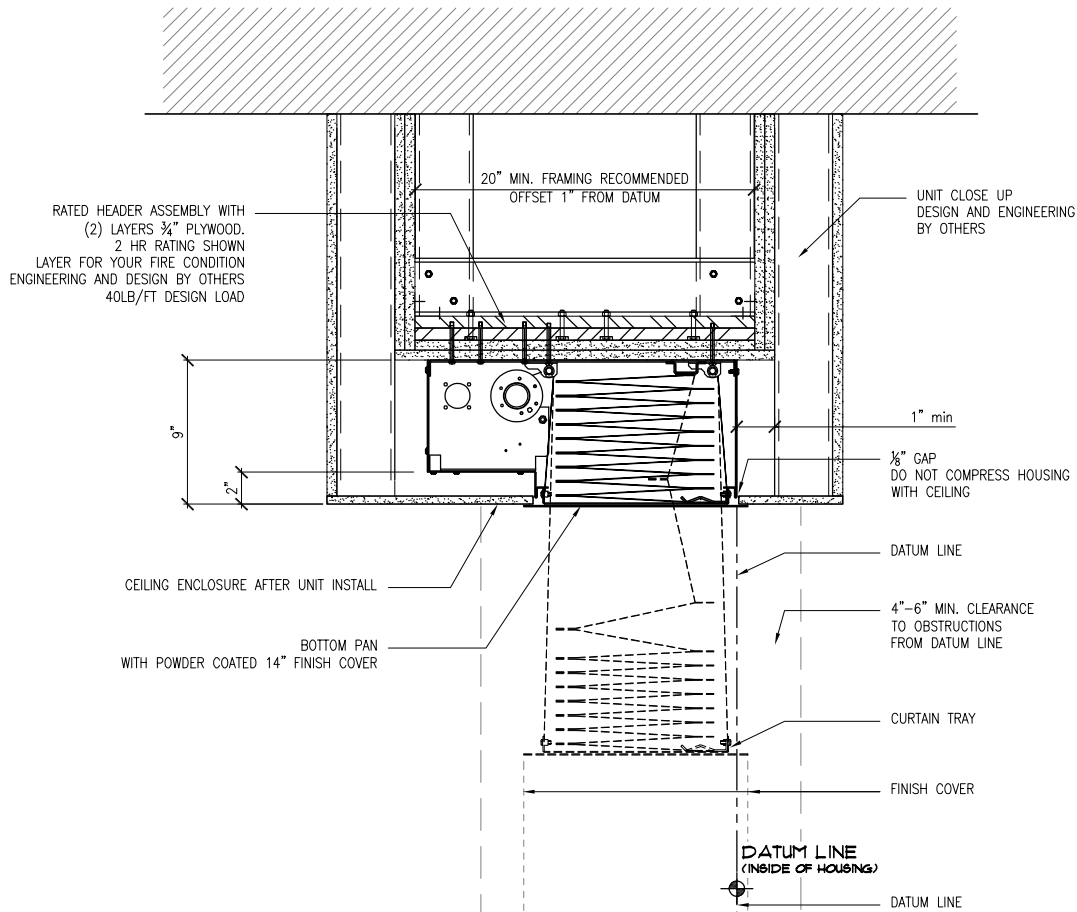
SG-M4000

DD6

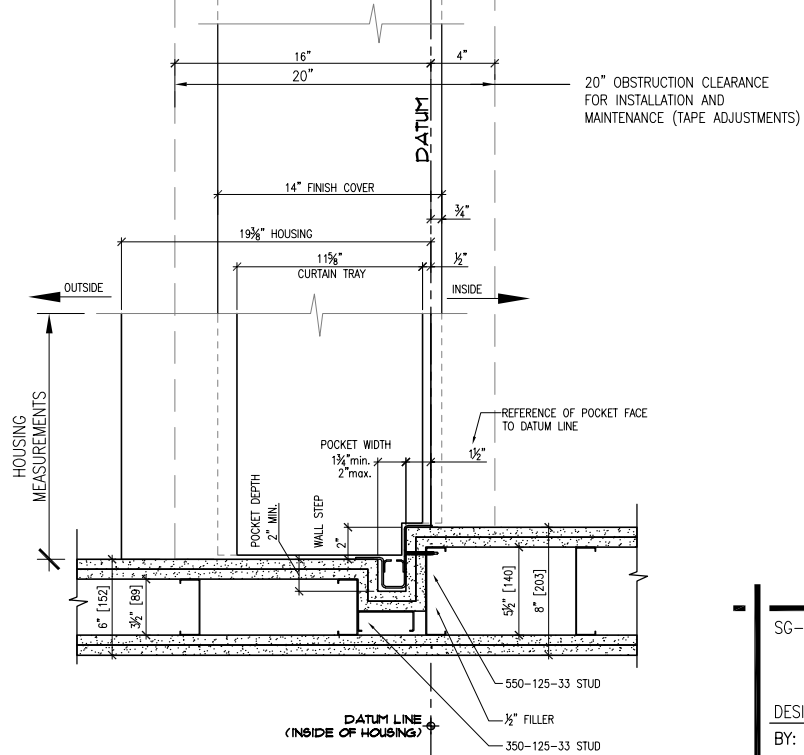
GENERIC
DESIGN DETAILS
BY: HGK

M4000
1.5.2016





B COORDINATION DETAIL - AT HEAD BOX
3/4" = 1'-0"



A COORDINATION DETAIL - AT SIDE GUIDE
3/4" = 1'-0"

SC-M4000

DD7

DESIGN DETAILS

M4000

BY: HGK

10.17.2016

