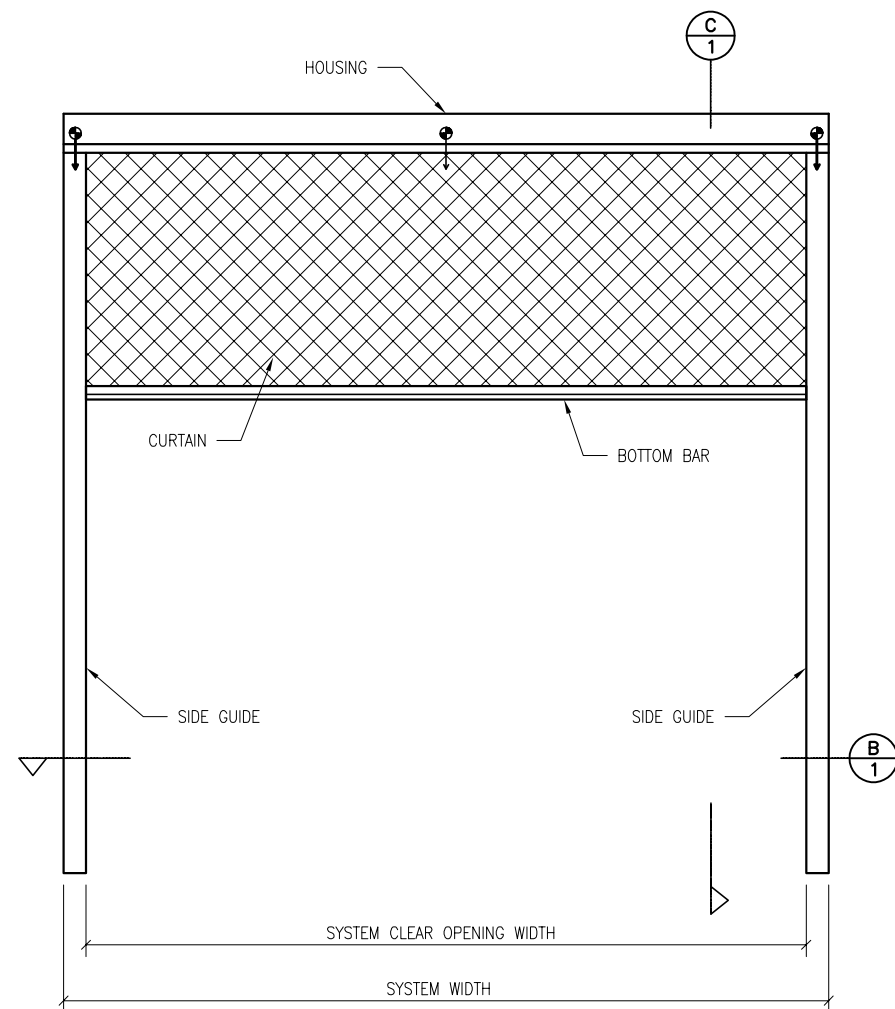
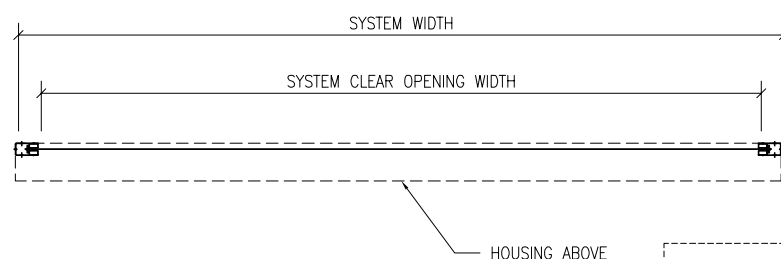


- GENERAL NOTES:
1. SMOKE GUARD FIRE RATED UNITS (HOUSINGS & SIDE GUIDES) TO BE MOUNTED TO A FINISHED, FIRE RATED ASSEMBLY OR STRUCTURE PER YOUR APPLICATION.
 2. CLIENT TO PROVIDE CONTINUOUS MOUNTING SURFACE FOR STRUCTURAL AND SHEET METAL ATTACHMENT.
 3. TOLERANCE: FLOOR TO CEILING VARIANCE MUST BE WITHIN $\pm 1/2"$ ACROSS LENGTH OF MACHINE..
 4. ORDER LENGTHS TO BE AT $1/4"$ INCREMENTS ONLY.
 5. DIMENSIONS TO NOT INCLUDE HEADS OF EXTERNAL FASTENERS.

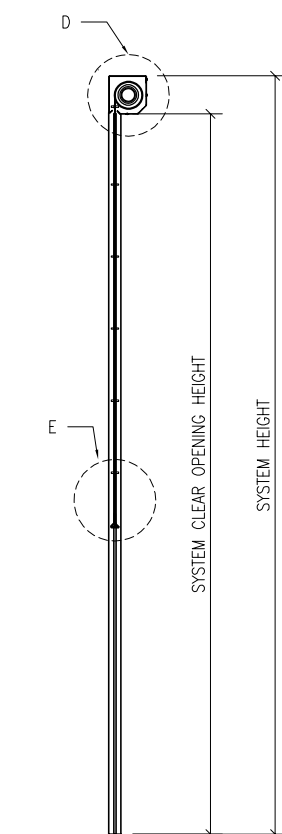


A ELEVATION
SCALE: 3/8" = 1'-0"

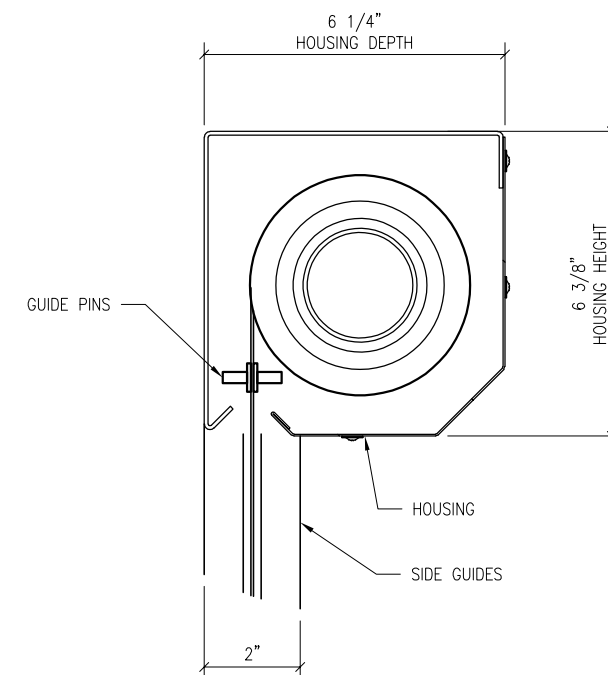


B PLAN SECTION
SCALE: 3/8" = 1'-0"

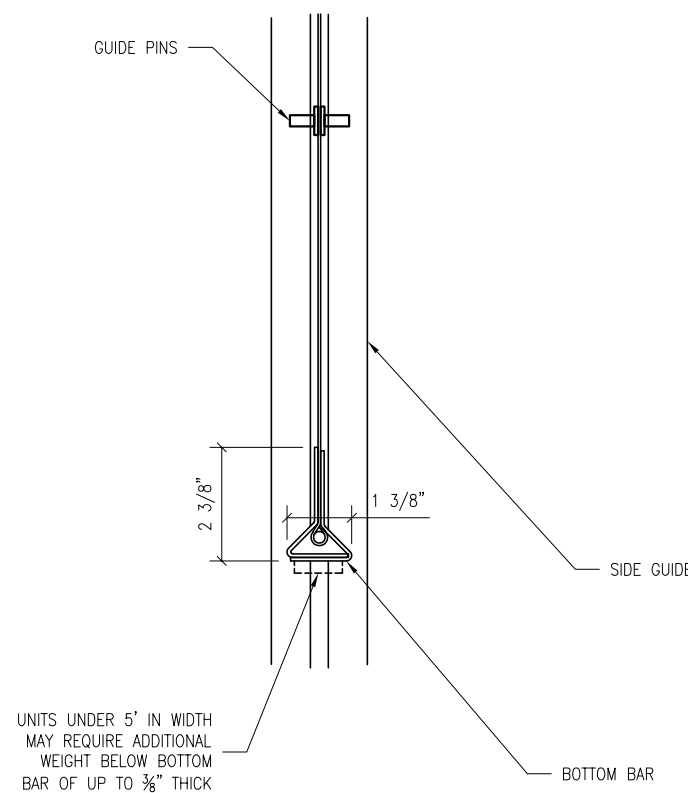
20"x20"
ACCESS PANEL
REQ'D FOR
LOWERED
HARD CEILING



C ELEVATION SECTION
SCALE: 3/8" = 1'-0"



D DETAIL D: HOUSING
SCALE: 3" = 1'-0"



UNITS UNDER 5' IN WIDTH
MAY REQUIRE ADDITIONAL
WEIGHT BELOW BOTTOM
BAR OF UP TO 3/8" THICK

E DETAIL E: BOTTOM BAR
SCALE: 3" = 1'-0"

REVISION

REVISION NUMBER	REVISION DATE	REVISION DESCRIPTION
D1	5.1.17	INITIAL RELEASE

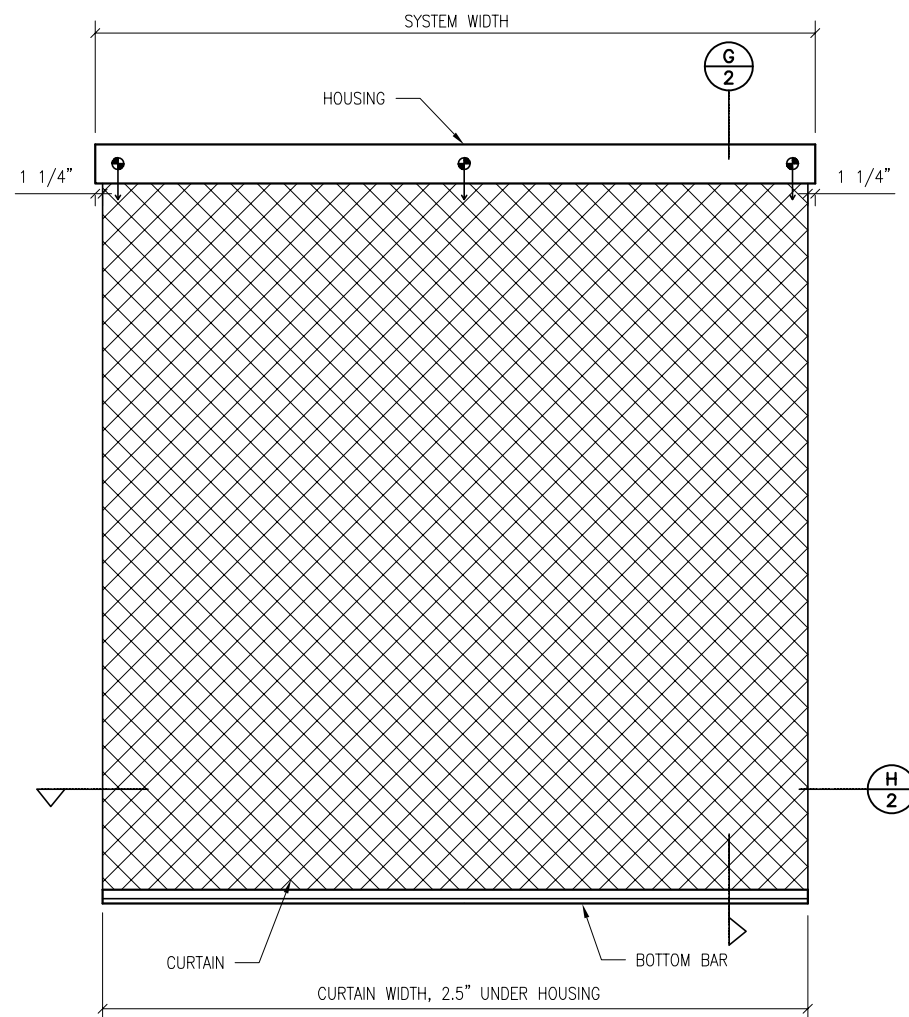
QUOTE:
CONFIGURATION:
PROJECT:
DIST.:

DESIGN SET: D1
MODEL: M2100

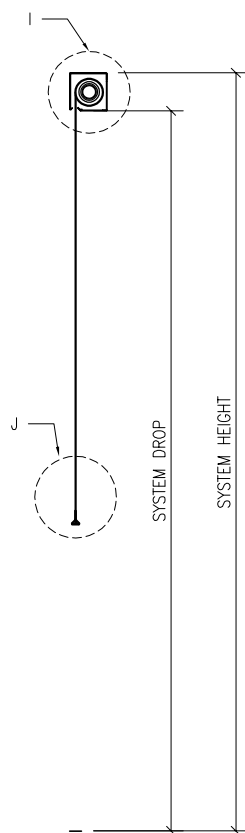
SIZE
B
SHEET

DRAWN: RB 5.5.2017 DD1/5

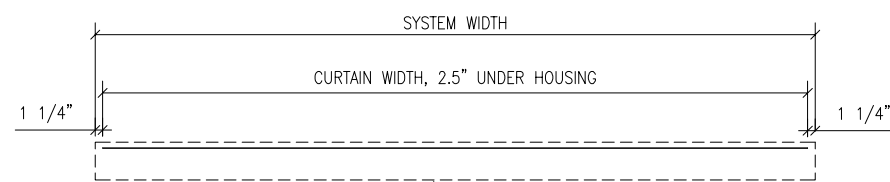
- GENERAL NOTES:
1. SMOKE GUARD FIRE RATED UNITS (HOUSINGS & SIDE GUIDES) TO BE MOUNTED TO A FINISHED, FIRE RATED ASSEMBLY OR STRUCTURE PER YOUR APPLICATION.
 2. CLIENT TO PROVIDE CONTINUOUS MOUNTING SURFACE FOR STRUCTURAL AND SHEET METAL ATTACHMENT.
 3. TOLERANCE: FLOOR TO CEILING VARIANCE MUST BE WITHIN +/- 1/2" ACROSS LENGTH OF MACHINE..
 4. ORDER LENGTHS TO BE AT 1/4" INCREMENTS ONLY.
 5. DIMENSIONS TO NOT INCLUDE HEADS OF EXTERNAL FASTENERS.



F ELEVATION
SCALE: 3/8" = 1'-0"

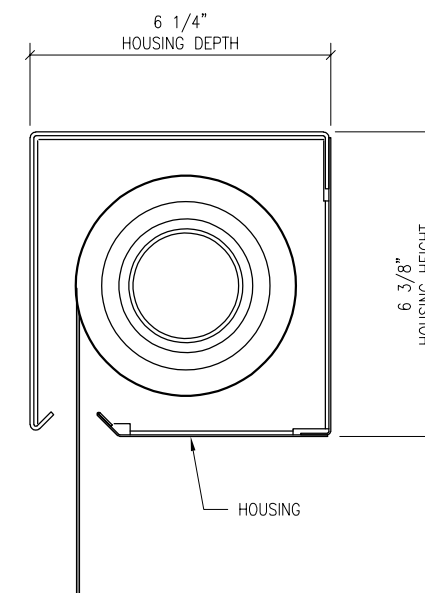


G ELEVATION SECTION
SCALE: 3/8" = 1'-0"

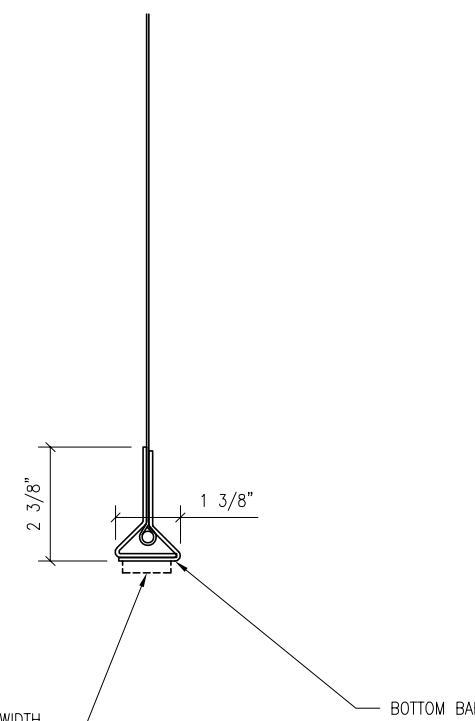


H PLAN SECTION
SCALE: 3/8" = 1'-0"

20"x20"
ACCESS PANEL
REQ'D FOR
LOWERED
HARD CEILING



I DETAIL I: HOUSING
SCALE: 3" = 1'-0"



UNITS UNDER 5' IN WIDTH
MAY REQUIRE ADDITIONAL
WEIGHT BELOW BOTTOM
BAR OF UP TO 3/8" THICK

J DETAIL J: BOTTOM BAR
SCALE: 3" = 1'-0"

REVISION

REVISION NUMBER	REVISION DATE	REVISION DESCRIPTION
D1	5.1.17	INITIAL RELEASE

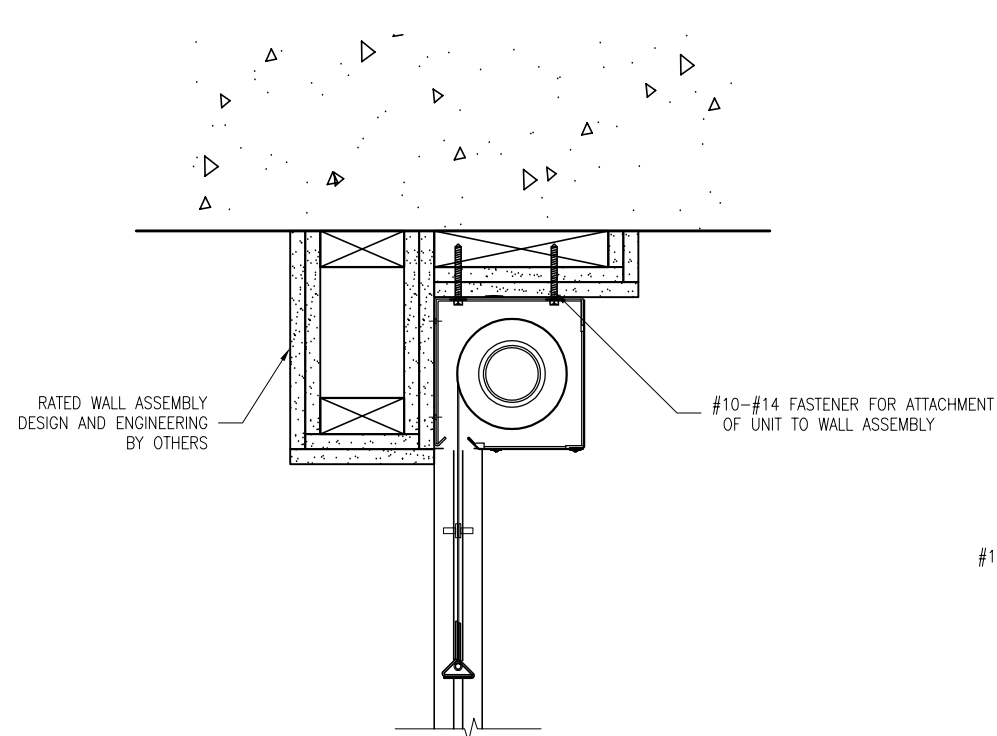
QUOTE:
CONFIGURATION:
PROJECT:
DIST.:

DESIGN SET: D1
MODEL: M2100

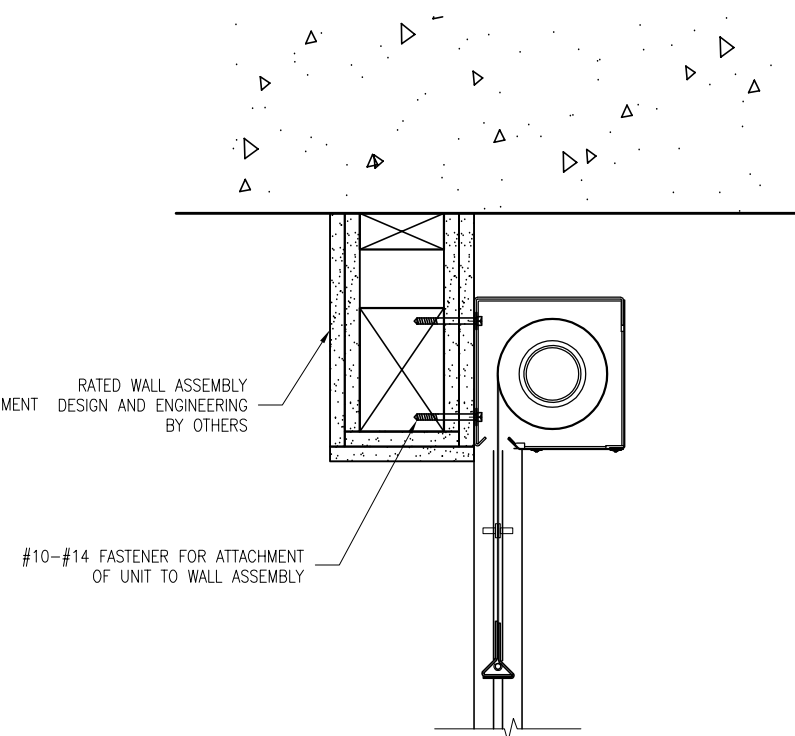
SIZE
B
SHEET

DRAWN: RB 5.5.2017 DD2/5

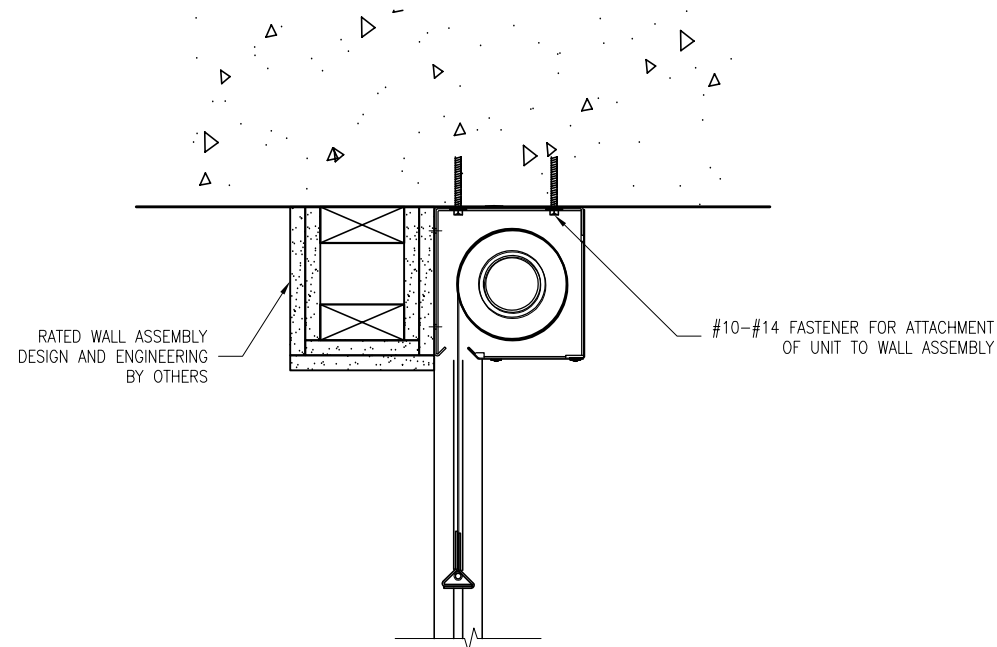
- GENERAL NOTES:
1. SMOKE GUARD FIRE RATED UNITS (HOUSINGS & SIDE GUIDES) TO BE MOUNTED TO A FINISHED, FIRE RATED ASSEMBLY OR STRUCTURE PER YOUR APPLICATION.
 2. CLIENT TO PROVIDE CONTINUOUS MOUNTING SURFACE FOR STRUCTURAL AND SHEET METAL ATTACHMENT.
 3. TOLERANCE: FLOOR TO CEILING VARIANCE MUST BE WITHIN +/- 1/2" ACROSS LENGTH OF MACHINE..
 4. ORDER LENGTHS TO BE AT 1/4" INCREMENTS ONLY.
 5. DIMENSIONS TO NOT INCLUDE HEADS OF EXTERNAL FASTENERS.



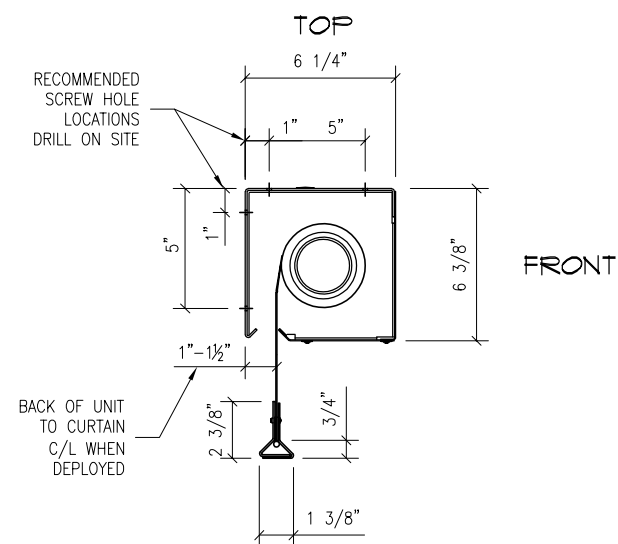
1 HEADBOX AS TESTED - FACE MOUNT
SCALE: 1 1/2" = 1'-0"
APPROVED FIRE RATED INSTALLATION



2 HEADBOX - TOP MOUNT DECK PLATE WITH DROPPED RATED ASSEMBLY
SCALE: 1 1/2" = 1'-0"
APPROVED FIRE RATED INSTALLATION



3 HEADBOX - TOP MOUNT DECK WITH DROP RATED ASSEMBLY
SCALE: 1 1/2" = 1'-0"
APPROVED FIRE RATED INSTALLATION



4 HEADBOX SECTION DETAILS
SCALE: 1 1/2" = 1'-0"

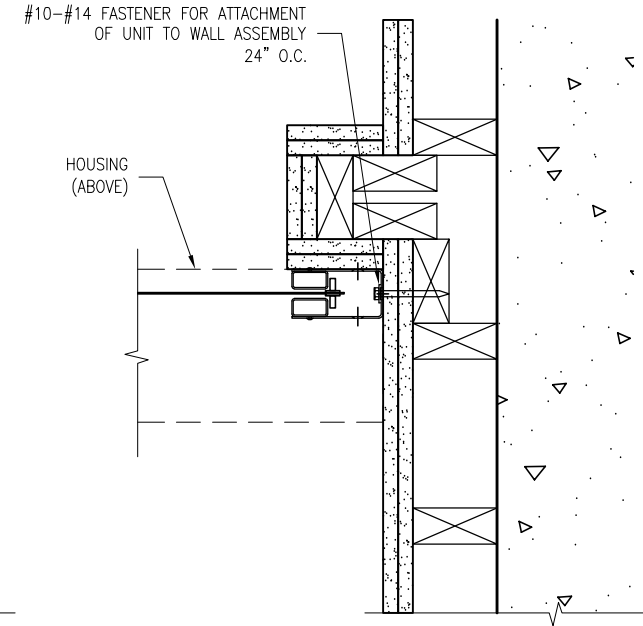
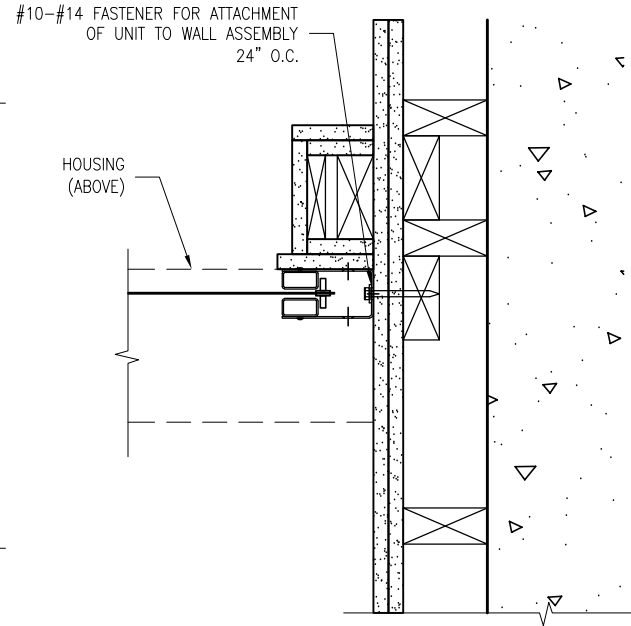
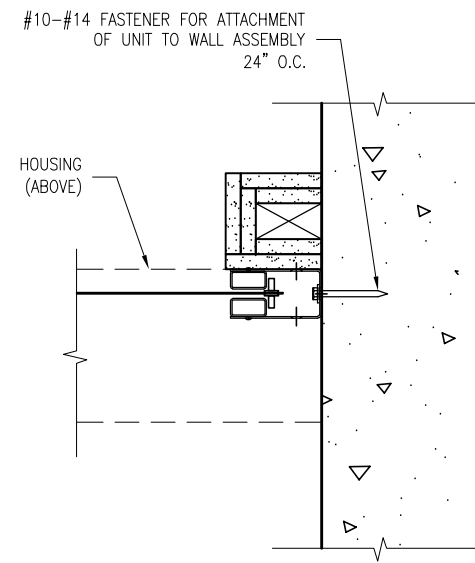
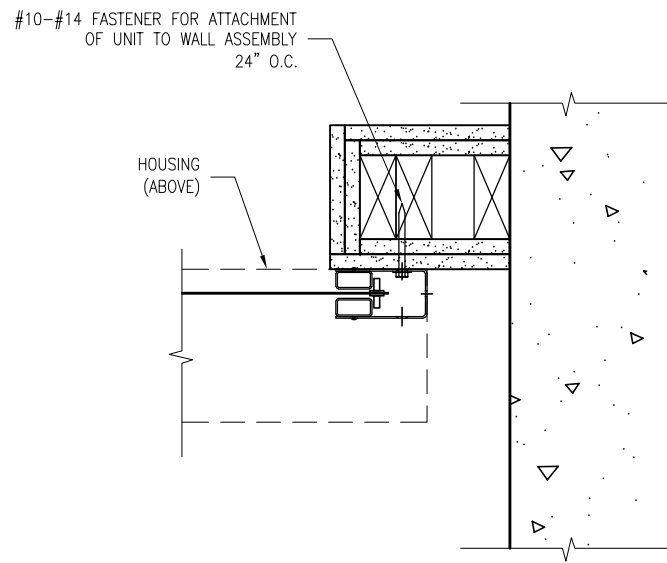
- MODEL SPECIFIC NOTES:
1. STRUCTURAL DESIGN TO USE LOADS OF 12 LBS/FT
 2. M2100F MODEL IS TESTED IN DETAIL 1 TO ACHIEVE 2HR FIRE LISTED RATING.
 3. STRUCTURAL ATTACHMENT TO BE WITHIN 6" OF EACH END AND MAX OF 36" ON CENTER. (2) SCREWS PER LOCATION, DRILLING REQUIRED ON SITE.

REVISION		
REVISION NUMBER	REVISION DATE	REVISION DESCRIPTION
D1	5.1.17	INITIAL RELEASE

QUOTE:
CONFIGURATION:
PROJECT:
DIST.:

DESIGN SET: D1	SIZE B
MODEL: M2100	SHEET
DRAWN: RB	5.5.2017 DD3/5

- GENERAL NOTES:
- SMOKE GUARD FIRE RATED UNITS (HOUSINGS & SIDE GUIDES) TO BE MOUNTED TO A FINISHED, FIRE RATED ASSEMBLY OR STRUCTURE PER YOUR APPLICATION.
 - CLIENT TO PROVIDE CONTINUOUS MOUNTING SURFACE FOR STRUCTURAL AND SHEET METAL ATTACHMENT.
 - TOLERANCE: FLOOR TO CEILING VARIANCE MUST BE WITHIN +/- 1/2" ACROSS LENGTH OF MACHINE.
 - ORDER LENGTHS TO BE AT 1/4" INCREMENTS ONLY.
 - DIMENSIONS TO NOT INCLUDE HEADS OF EXTERNAL FASTENERS.

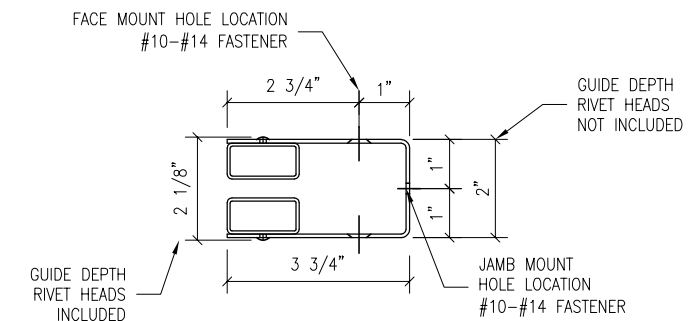
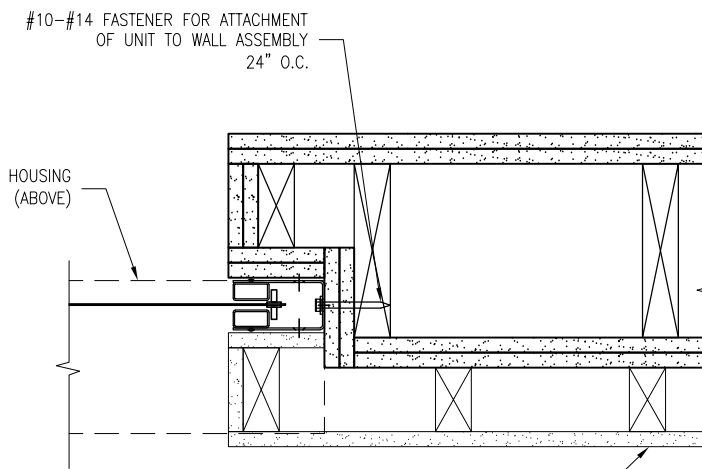
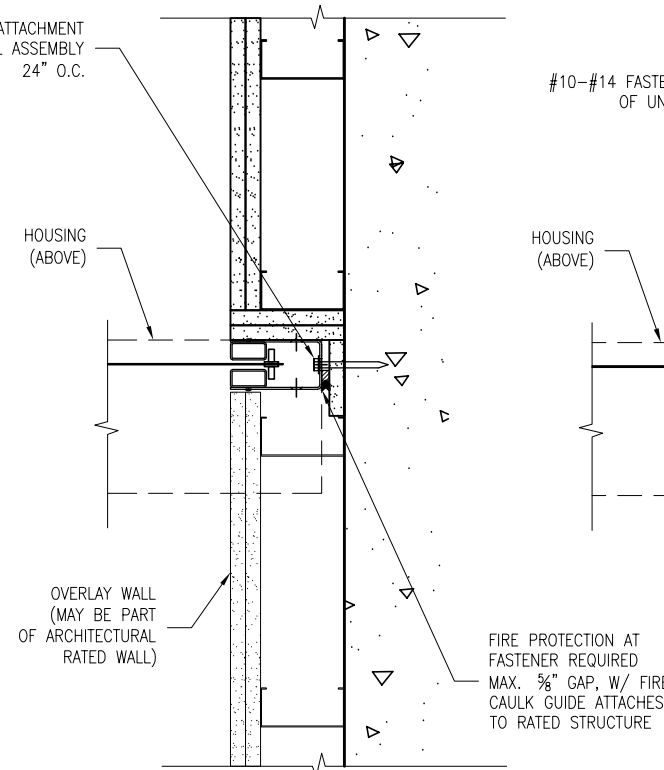
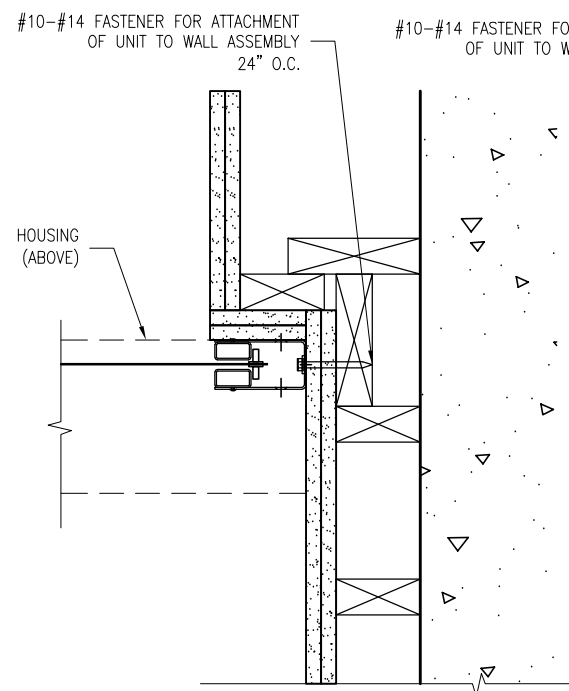


5 SIDE GUIDE AS TESTED - FACE MOUNT
SCALE: 1 1/2" = 1'-0"

6 SIDE GUIDE DETAIL - DIRECT JAMB MOUNT, APPLIED BUMP OUT
SCALE: 1 1/2" = 1'-0"

7 SIDE GUIDE DETAIL - JAMB MOUNT, APPLIED BUMP OUT
SCALE: 1 1/2" = 1'-0"

8 SIDE GUIDE DETAIL - JAMB MOUNT, APPLIED BUMP OUT
SCALE: 1 1/2" = 1'-0"



12 SIDE GUIDE SECTION DETAIL
SCALE: 3" = 1'-0"

9 SIDE GUIDE DETAIL - JAMB MOUNT, STAGGERED ASSEMBLY
SCALE: 1 1/2" = 1'-0"

10 SIDE GUIDE DETAIL - JAMB MOUNT, PERPENDICULAR TO WALL
SCALE: 1 1/2" = 1'-0"

11 SIDE GUIDE DETAIL - JAMB MOUNT, STAGGERED ASSEMBLY INLINE W/WALL, NON-RATED OVERLAY
SCALE: 1 1/2" = 1'-0"

FIRE RATED DETAILS

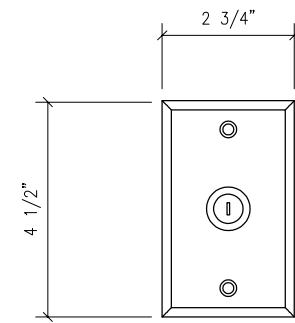
MODEL SPECIFIC NOTES:
1. M2100F MODEL IS TESTED IN DETAIL 5 TO ACHIEVE 2HR FIRE LISTED RATING

REVISION		
REVISION NUMBER	REVISION DATE	REVISION DESCRIPTION
D1	5.1.17	INITIAL RELEASE

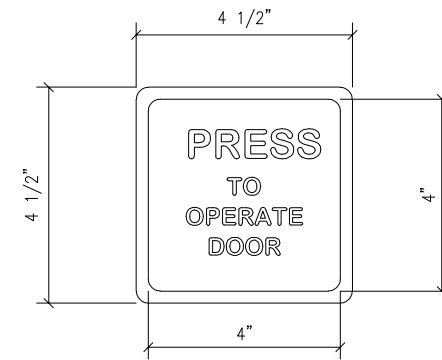
QUOTE:
CONFIGURATION:
PROJECT:
DIST.:

DESIGN SET: D1	SIZE B
MODEL: M2100	SHEET
DRAWN: RB	5.5.2017
DD4/5	

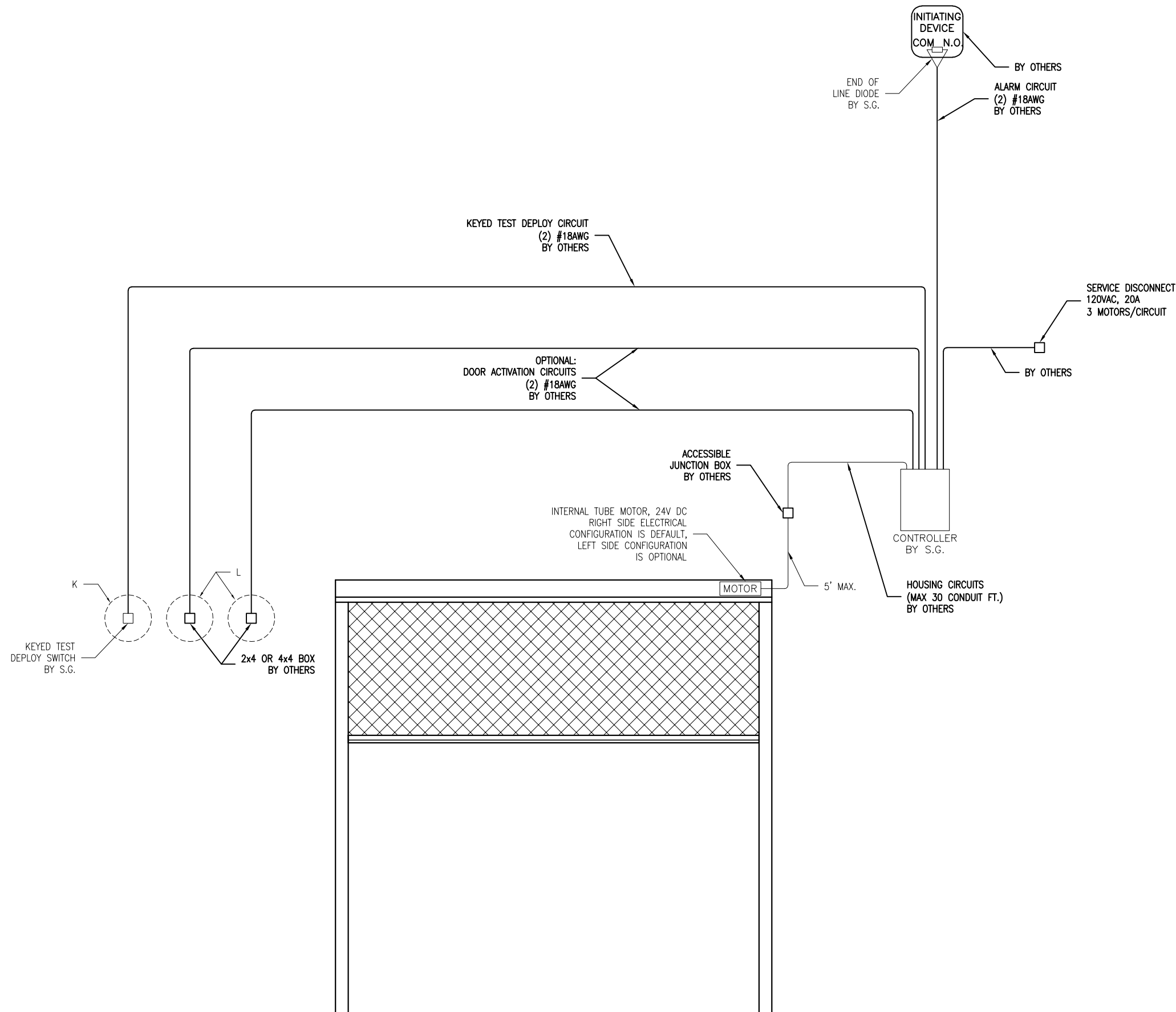
- GENERAL NOTES:
- SMOKE GUARD TO PROVIDE:
 - MAIN CONTROLLER STATION
 - END-OF-LINE DIODE
 - ALL REMAINING ELECTRICAL BY OTHERS.
 - DEFAULT LOCATION OF MAIN MOTOR IS RIGHT SIDE VIEWED FROM FRONT ELEVATION. LEFT SIDE IS OPTIONAL UPON REQUEST.
 - CONTROLLER DIMENSIONS ARE 18"x14.25"x 6", REFER TO SUPPLEMENTARY DOCUMENTATION FOR WIRING SPECIFICS & MOUNTING DETAILS.



DETAIL K: KEYED TEST DEPLOY SWITCH
SCALE: 3" = 1'-0"



DETAIL L: DOOR ACTIVATION SWITCHES
SCALE: 3" = 1'-0"



12 ELECTRICAL DIAGRAM
SCALE: 3/8" = 1'-0"

REVISION		
REVISION NUMBER	REVISION DATE	REVISION DESCRIPTION
D1	5.1.17	INITIAL RELEASE

QUOTE:
CONFIGURATION:
PROJECT:
DIST.:

DESIGN SET: D1	SIZE B
MODEL: M2100	SHEET
DRAWN: RB	5.5.2017
DD5/5	